



MEMORANDUM REPORT

Meeting Date: July 19, 2022

TO: Board of Commissioners of the Los Altos Hills County Fire District

FROM: Altamont Road Project Team:
Dave Barnett, Operations Manager
Denise Gulhan, Emergency Services Manager
Eugenia Rendler, Programs, Planning and Grants Manager
Reviewed by J. Logan, General Manager

SUBJECT: Altamont Road Evacuation -Route Project Final Reports

RECOMMENDATION:

Receive Altamont Road Evacuation Route Project Final Reports

BACKGROUND

The Los Altos Hills County Fire District (District or LAHCFD) 2021/2022 Strategic Plan, Goal 3, Attachment 1, aims to mitigate fire risks and build community resiliency through integrated hazardous fuel reduction (IHFR), protection and prevention programs, Attachment 2. These programs are based on fire science, the LAHCFD CWPP (Community Wildfire Protection Plan) Annex 4 and the expenditures allocated in the annual District budget. IHFR projects are designed to enhance community resiliency, educate District residents, and reduce community fire hazards. In accordance with Goal 3, staff identified high fire risk areas and initiated collaborative solutions with regional partners including the Santa Clara County Central Fire Protection District (Fire Department). The projects targeted roadside hazardous vegetation reduction on major transportation corridors such as Page Mill Road - Phase I and Phase II in 2020/2021, Moody/El Monte Roads in 2021, and currently Altamont Road. The fundamental goal of these evacuation route and road hardening projects is to provide greater protection for life safety and to reduce property losses in event of wildfire by providing safer ingress and egress for vehicles and emergency responders.

Santa Clara County FireSafe Council (FSC) was the project manager for the Page Mill Road, Phase I and Phase II, Moody/El Monte Roads, and Altamont Road projects that were designed to remove hazardous vegetation from the roadside and thereby create multiple evacuation routes for ingress and egress in event of a wildfire or emergency incident. These LAHCFD Evacuation Road Projects were

successfully completed, resulting in greater public safety and in alignment with LAHCFD's and Santa Clara County's evacuation initiatives.

The Altamont Road Evacuation Route Project was selected because it is a connecting road to the evacuation routes of Page Mill Road and Moody/El Monte Roads. Altamont Road provides residents and travelers with two ways out along the adjoining key roads that are evacuation route prepared because the hazardous vegetation is removed along the roadways. This project would create a primary egress option for residents along Altamont while serving as an alternate evacuation route for Page Mill and Moody/El Monte communities.

The Altamont Road project was similar in complexity to the Moody/El Monte Roads project, except the project was shorter in distance and did not involve Foothill College property that required additional planning and specialized equipment for vegetation mitigation. Some Altamont Road treatment areas were loaded with deep and dense roadside hazardous vegetation. Other treatment areas, such as along Byrne Preserve, were primarily grass and trails allowing for crews to work quickly in removing hazardous fuels. Trash and refuse, while less extensive than previous projects, were uncovered during the vegetation reduction work and removed. Creeks and certain environments and biological species were marked and protected from disturbance of the project activities. There was coordination with regional, Town and local partners as well as with the seventy-nine (79) property owners along Altamont Road and the intersecting streets. The project offered high rewards to enhance public safety and was completed successfully and on schedule.

Reports on the Page Mill and Moody/El Monte evacuation route and road hardening projects can be found at the links below.

Page Mill Road Project Phase I Report:

https://www.lahcfd.org/download/june-16-2020-fire-district-commission-meeting/?wpdmdl=2486&refresh=62cdbf9846cf31657651096&ind=1592322420770&filename=06162020_LAHCFD_12C_Shaded-Fuel-Break-Page-Mill-Rd-Summary-.pdf

Page Mill Road Project Phase II Report:

https://www.lahcfd.org/download/january-19-2021-fire-district-commission-meeting/?wpdmdl=3293&refresh=62cdc25e3062f1657651806&ind=1610781200081&filename=20210119_LAHCFD_13_Emergency-Service-Manager-Report.pdf

Moody/El Monte Roads Report:

https://www.lahcfd.org/download/april-19-2022-fire-district-commission-meeting/?wpdmdl=4085&refresh=62cddb1ee5fa71657649950&ind=1650099059633&filename=20220419_LAHCFD_08G_Moody-El-Monte-Evac-Route-Report.pdf

DISCUSSION

The Santa Clara County FireSafe Council Final Report for the Altamont Road Evacuation Route Project is Attachment 3. The District provides this Report and summary of costs for the project, Attachment 4. The Altamont Road Evacuation Route Project resulted in many successes and provided numerous insights. LAHCFD will utilize the processes, community outreach and project planning results for future evacuation route projects.

Successes

- LAHCFD staff identified key parcels where hazardous vegetation and topography was a priority for removal of vegetation to mitigate threat of wildfire that would impede ingress and egress of vehicles. Staff contacted all 79 parcels along the route and identified 22 parcels as key properties. A total of 18 parcels participated in the project, 11 of which were key parcels. These residents granted a Right of Entry (ROE) to allow vegetation mitigation on their property that abutted Altamont Road. The ROE participation rate was 22% of all parcels, and 50% of key parcels. This above average rate of participation was due to the outreach conducted by the staff project team and Santa Clara County FireSafe Council. FSC projects typically experience participation ranges from 10-40%.
- With assistance of County Counsel, the project team completed CEQA requirements by filing a Notice of Exemption (NOE) through the Office of the Santa Clara County Clerk. By filing the NOE, LAHCFD utilized a process that notified the public of the proposed mitigation work, provided the public the opportunity to voice concerns, and if concerns were expressed, allowed for time to address and remedy the concerns prior to commencing the project. No concerns were received, and the project commenced as planned.
- Hazardous fuels removal was greatly facilitated by trail easements along Altamont. The trails along Altamont allowed for extensive removal of hazardous fuels within the 15'-30' zone from road edge. Large sections of Altamont Road had trees, brush, and dead fuels in this zone, which would have limited work for any parcel which did not submit an ROE. Most of the key parcels that did not submit an ROE had a trail easement, which allowed removal of critical hazardous vegetation in these areas.
- Advancement in planning and project management was successful using data-gathering technology: LAHCFD staff collected data before and after the project with ground photos, ground survey and telemetry. While the analysis of the data is in progress, the objective is to provide metrics for this completed project. The ground survey process enables planning and development of accurate scope of work for future projects. With each project and resulting data analytics, LAHCFD will have an increased capability to accurately define project scope, produce project budgets, predict project vegetation removal capacity, and accurately schedule phases and completion of work. The data-gathering process also provides better analytics to stakeholders and partners involved in future evacuation projects. Future projects are anticipated to be larger in scope and complexity and require skillful planning and project management.
- Building telemetry data was achieved by utilization of GIS and Unmanned Aerial System (UAS) videography that recorded both before and after vegetation treatment in this project. Data was generated for the volume of vegetation removed, tracking hazard trees and subsequent vegetation regrowth will be verified with ground-truthed data the staff collected as mentioned above. As larger, longer projects are undertaken, vetted UAS volume measurement methods and other data points such as locations of critical infrastructure and certain vegetation types, will increase planning accuracy in environmental compliance, hazard identification and volume of treated vegetation. This will increase staff safety, accuracy in scope of work and requests for proposals (RFP) and verification of work accomplished in addition to the appeal of visual documentation.
- Recognition and gratitude from the community and agencies for the public safety benefits of the project were received.

- LAHCFD efforts strongly support the Office of the Insurance Commissioner's Initiative for the insurance industry to recognize wildfire mitigation efforts as a benefit to the insured.
- Appreciation is expressed for the dedicated support of the LAHCFD Board of Commissioners, the Fire Department, Town of Los Altos Hills Byrne Preserve, Santa Clara County FireSafe Council, and the contractor, crews and traffic control involved in the success of the project.
- The Altamont Road Evacuation Route Project enhances and refines experience necessary for improvement of future evacuation road projects. Future projects will seek more community input to guide the upcoming road evacuation route designs.
- Production of Mission Moment #3 summarized the goals for evacuation routes and road hardening, introduced staff to the public who may see them in future projects, and explained how removal of hazardous vegetation provided greater ingress and egress is a critical life and property safety measure.

Insights/Lessons Learned

- Ensure flexibility of the project plan to accommodate potential staffing issues. Contingency plans could include having additional crewmembers, tools and a second chipper to provide resources to meet project timeline in case of staffing issues or equipment failures. COVID did result in reduction of staffing during this project. From ground observation and support by metrics, there may be a value of two crews and two chippers in comparison to one of each. In this vegetation density and traffic flow patterns, two crews/chippers almost tripled the production rate of using a single chipper and crew. However, dual crews and equipment can present increased traffic control and safety issues depending on the location and topography of the roads.
- Focus on key parcels was effective to increase participation of residents to grant ROE access in strategic locations along the route. Preparation, outreach, and education of residents along the route of key parcels resulted in several ROEs that allowed for critical work to be completed.
- Crew production rates are impacted by heat and weather. As opposed to the Moody/El Monte Roads project, which took place in November, Altamont was completed in May. Several days were above 90 degrees and impacted the crews significantly. Proper work/rest cycles with hydration were implemented and expectations for the days by project managers were adjusted.
- Interactions with community spontaneously, at events and during field projects are a key component of participation and success of each fuel reduction project. As with previous projects, residents who did not participate in the Altamont project became aware of the value and will have the opportunity to participate in the future when Altamont receives maintenance services for vegetation mitigation.
- Diligence and thorough planning pay high dividends for the result. High value and contributions by all staff ensured the success of the project for public safety and benefits to the community were achieved. Extensive planning, CEQA, project design, pulling of permits, meetings with regional and local agency partners for discussion and understanding of the project occurred and staff will continue and build on these efforts for future projects.
- Lessons learned from previous projects were utilized during the Altamont project. LAHCFD staff will continue this important practice. The result was a well-prepared project team during construction of the evacuation route, i.e., District staff, FSC staff, skilled contractor personnel who were all working at the same time, daily, as a team.

As a result of the collaboration and coordination between LAHCFD and its partners, the Altamont Road Evacuation Route Project was successful and provided a strategic and high priority public safety benefit to the community in the event of a wildfire or emergency incident. LAHCFD thanks the team, contractors, Commissioners, community members and partner agencies for their contributions to and support of this project.

Attachment(s):

1. LAHCFD 2021-2022 Strategic Plan Summary Chart of Six Goals
2. LAHCFD Chart of Services, V11, 3/01/2022
3. Santa Clara County FireSafe Council Final Report: Altamont Road Evacuation Route Project
4. Exhibit A – LAHCFD Cost Summary



<p>Goal</p>	<p>1. Engage Community and partners to review and update the LAHCFD Community Wildfire Protection Program (CWPP) Annex 4 and Addendum for Residents Annex 4 is our local CWPP which describes wildfire hazards and mitigation measures to meet our community’s unique local, social and ecological characteristics. We are updating these guiding documents periodically to conform to current fire science knowledge and capture lessons learned from increasingly severe wildfire occurrences.</p>	<p>2. Align District operations with County-wide fire protection goals and County recommendations As a Dependent District of the County, the LAHCFD operates within parameters established by the County and participates in the County and LAFCO County-wide fire protection studies as a regional partner.</p>	<p>3. Mitigate risk and build community resiliency through integrated hazardous fuel reduction, protection and prevention programs As illustrated in the Forward Looking Resiliency Chart, fund, create and implement programs based on fire science, CWPP/Annex 4 and the annual budget to enhance community resiliency, educate District residents and reduce community hazards.</p>	<p>4. Develop policies and processes for management of District’s water systems of hydrant and hydrant infrastructure for protection of property, life-safety & support of fire suppression systems Continually improve community fire protection through District’s water system of 540 hydrants and infrastructure; develop a studied approach to issues related to District-owned hydrants and hydrant infrastructure.</p>	<p>5. Deliver community services that support emergency response and build programs of outreach, communication, education and regional benefits Collaborate with regional partners to strengthen community resilience, transparency and effectiveness of local government programs. Continue to identify opportunities to use District resources to benefit a broader regional area in support of common interests.</p>	<p>6. Adapt organization and allocate resources to promote stability and sustainability of the District to continue its operations as a valued local Special District. Optimize organizational structure to align with the District’s Mission and Goals; utilize available resources and adapt to a regional approach for community resiliency.</p>
<p>Objectives</p>	<p>a. Develop a timeline for action steps for a public process with stakeholders and community members</p> <p>b. Identify experts and resources to be consulted during this process</p> <p>c. Research and hold meetings with experts</p>	<p>a. Reporting process to County: Adhere to County Mgmt Audit recommendations, prepare & deliver monthly reports to County Committees and Mgmt Audit Division</p> <p>b. Participate in LAFCO county-wide fire services review and</p>	<p>a. Identify high fire risk areas; initiate collaborative solutions with regional partners and SCCFD</p> <ul style="list-style-type: none"> • Target roadside fuel reduction • Target open space fuel reduction • Enhance vegetation management <p>b. Continue to partner with regional organizations to support Home Ignition Zone (HIZ) surveys of properties and provide action</p>	<p>a. Develop policies and guidelines for hydrant and infrastructure location, replacements and additions; and evaluate pipeline resiliency when opportunities for improvements occur in coordination with County Central Fire,</p>	<p>a. Explore joint projects with neighboring agencies that affect our overlapping and adjacent service areas to provide resilience from wildfire and other disasters</p> <p>b. Support, encourage and revitalize Los Altos Hills Community Emergency Response Team (CERT) Program</p> <p>c. Support, encourage and revitalize Amateur Radio operator activities</p>	<p>a. Participate in LAFCO county-wide fire protection services review and County comprehensive review of fire services study; evaluate structure in context of these proceedings</p> <p>b. Provide resources to maintain a sustainable</p>

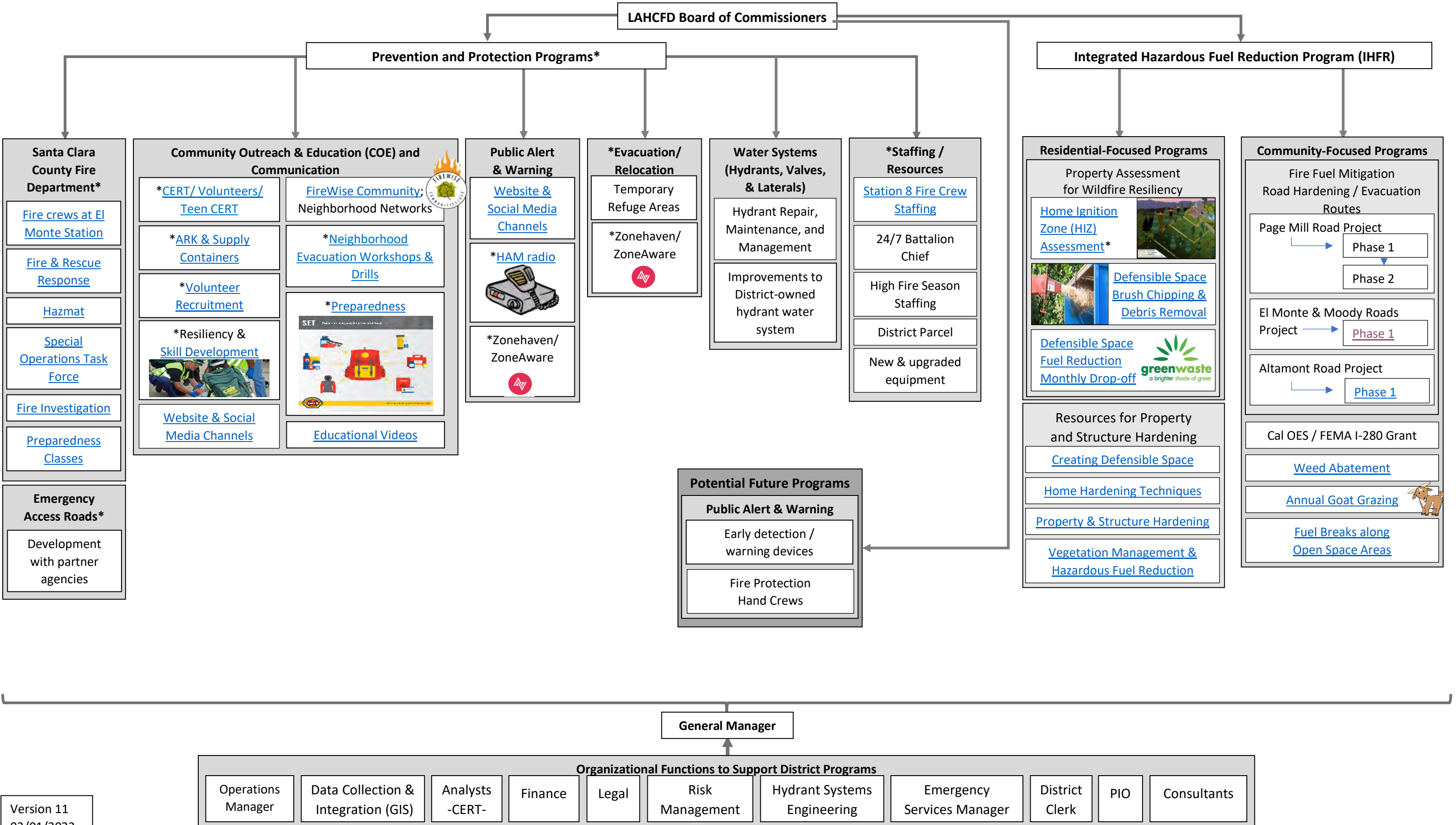


	<p>and resources to identify current best practices for CWPP</p> <p>d. Collaborate with Central Fire Dept personnel to align Annex 4 CWPP with County regional fire protection plan</p> <p>e. Upon completion of CWPP Annex 4, revise Addendum Guide for Residents</p> <p>f. Create a communication plan for residents and stakeholders to educate those who live in and work with the District to understand the revised CWPP Annex 4</p> <p>g. Obtain updated maps, integrate into GIS mapping</p>	<p>County comprehensive review of fire services</p> <p>c. Establish District records in a manner consistent with County policies and procedures for record management systems and retention schedules</p> <p>d. Work with County Counsel to identify District parameters for capital expenditures and any other requirements for allocation of District resources</p> <ul style="list-style-type: none"> Conform to County procurement policies, procedures and State requirements under the public contracting codes 	<p>items for life and property fire safety</p> <p>c. Consider incentives, consistent with CWPP and County Mgmt Audit, to reduce fire fuel load and to motivate property hygiene and home hardening against fire danger</p> <p>d. Create certificate of completion for HIZ participants to provide to their homeowner’s insurance carrier</p> <p>e. Use technology to strategically target fuel mitigation program delivery (GIS for brush chipping, shaded fuel breaks)</p> <p>f. Seek resident, vendor, staff and volunteer input for continuous improvement feedback to create, enhance and expand programs</p>	<p>engineering consultants and water purveyors</p> <p>b. Develop hydrant and infrastructure mapping and asset identification system utilizing GIS</p> <p>c. Supplement local and regional fire suppression capabilities through funding of portable pumper vehicle</p>	<p>d. Support and maintain the ARK and emergency supply containers and equipment</p> <p>e. Plan and host evacuation drills</p> <p>f. Continue using existing communication tools, including social media, while evaluating new technology and regional resources to educate community and align outreach communications with neighboring agencies</p> <p>g. Expand outreach by evaluating new opportunities to drive community to website to find current updates and critical information</p> <p>h. Continue to assess early notification advisories and ways to improve participation by District residents</p>	<p>administration to meet District operational needs</p> <p>c. Develop efficiencies for administration through utilization of County Departments to augment staff expertise and capacity</p> <p>d. Create succession plan to support continuity in staffing</p> <p>e. Ensure budget decisions are consistent with Strategic Plan and fiscally sustainable</p> <p>f. Identify adequate space for training, District meetings and District assets</p> <p>g. Explore opportunities for grant funding to augment District services</p> <p>h. Repurpose use of District parcel to expand fire protection response capability for local and regional benefit</p>
--	--	--	---	--	---	--

LEGEND
 *Indicates programs are delivered in collaboration with partner agencies
 Underlined text indicates a clickable link

LAHCFD Chart of Services **ATTACHMENT 2**
 Built on Fire Science & LAHCFD-CWPP Annex 4
 Guided by Strategic Plan 2021 – 2022 – Resourced by FY Budget

For more information on LAHCFD Programs and how to participate, please visit: www.LAHCFD.org
 An interactive version of this chart can be viewed here: www.lahcfd.org/governance/ForwardLookingCommunityResiliency





Santa Clara County FireSafe Council

14380 Saratoga Ave. Saratoga CA, 95070
 Phone (408) 975-9591 • www.SCCFireSafe.org



FINAL REPORT **Altamont Rd. Evacuation Route**

June 6, 2022

Introduction:

In cooperation with Los Altos Hills County Fire District (LAHCFD), the Santa Clara County FireSafe Council (SCCFSC) executed an Evacuation Route hardening project on Altamont Rd, located in Los Altos Hills, California. This Evacuation Route can potentially be utilized for evacuation during a wildfire incident. The project implementation will enhance fire resiliency by reducing ladder fuels, reducing roadside fire ignition opportunities, reducing invasive species, and improving evacuation routes. This project will add to Santa Clara County's developing evacuation route and vegetation management systems and provide opportunities to protect or manage watersheds in the event of future wildfires. Additionally, reducing competition in the understory and treating hazard trees where feasible will create a healthier and more vigorous ecosystem. The treated area serves multiple neighborhoods and many residents and visitors travel along this path every day.

Cooperators:

There are multiple agencies, contractors, property owners, and organizations that contributed to the project; Santa Clara County FireSafe Council, Los Altos Hills County Fire District, Statewide Safety Solutions, Miabella Expert Tree Service, the County of Santa Clara, and the Town of Los Altos Hills.

Goals For This Project:

1. Remove ladder fuel vegetation on the ground, limb up trees and remove accumulated dead fuel build up along the roadway.
2. Remove previously downed smaller trees that may pose a fire hazard during drier months.
3. Conduct hazardous fuel reduction up to 10'- 30' from the road edge to help provide a safer evacuation route in the event of an actual wildfire.
4. Removal of hazard trees; dead, dying, under-slung and overhanging that may fall on the roadway during extremely windy conditions.
5. No live trees (either native or non-native) that are large enough to require a tree removal permit are removed.
6. Prune live trees amounting to less than 25% of the canopy.
7. Trimmings and chips from trees and brush are broadcast back onto the roadside.
8. Chipped material spread over the treatment area.
9. Remove Dead trees in close proximity to the roadway.
10. Increase visibility for intersections and driveway turn outs.



Santa Clara County FireSafe Council

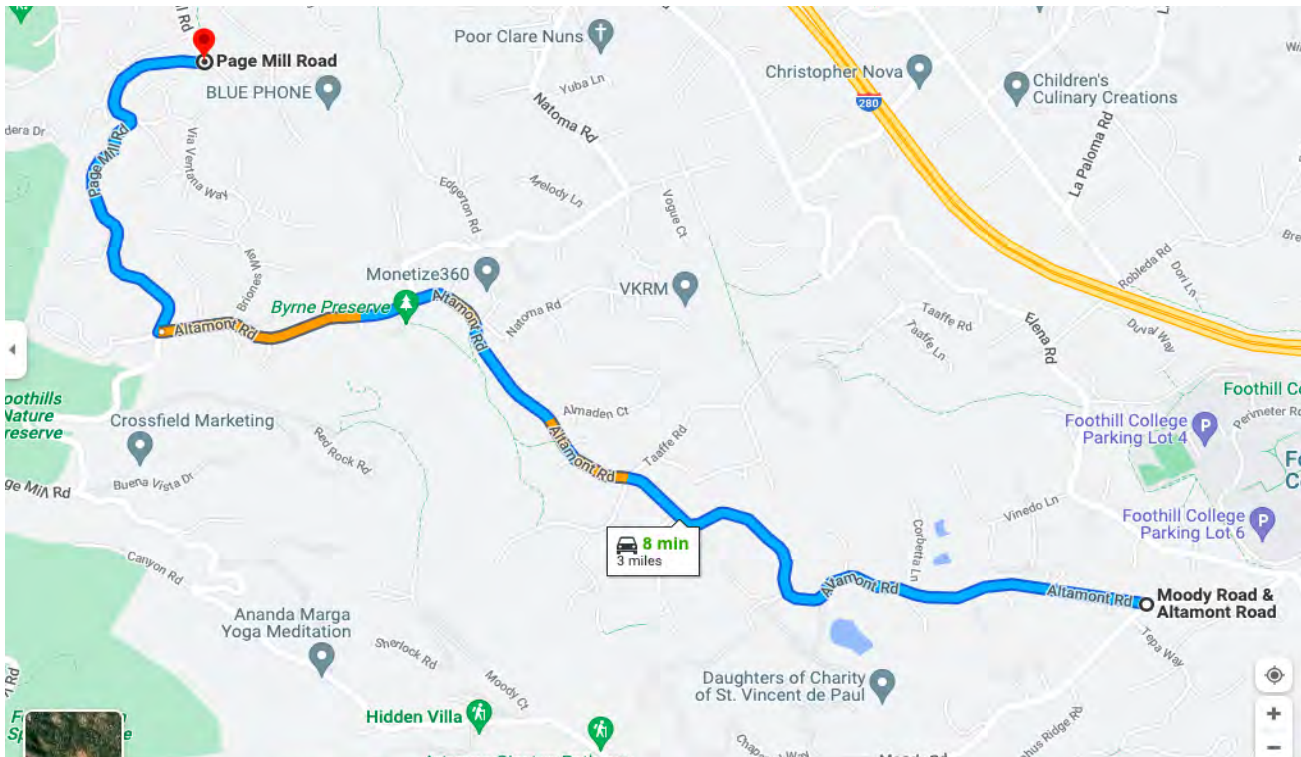
14380 Saratoga Ave. Saratoga CA, 95070
Phone (408) 975-9591 • www.SCCFireSafe.org



Project Site:

Treatment of vegetation was on the Town of Los Altos Hills right of way (15ft from the road) and properties along Altamont Rd. that submitted Right of Entry permits received 30-50 feet depth. The starting point was at the intersection of Altamont Rd and Moody Rd. The end of the project was at the intersection of Altamont Rd and Page Mill Rd.

Altamont Road Evacuation Route (Project Location)



Permissions:

One of the biggest challenges in these types of projects is getting permission to treat the properties. During the planning of the project we conducted an extensive public outreach effort to get the permissions needed. It included mailers, newspaper articles, door-to-door visits, and a social media campaign. We were able to include 18 of the 79 parcels involved. This represents 22% participation for the completion of the project. Prior to the project, LAHCFD staff conducted a survey of the area to identify key parcels within the project scope. After evaluation 22 key parcels were identified. We received 11 out of 22 of those



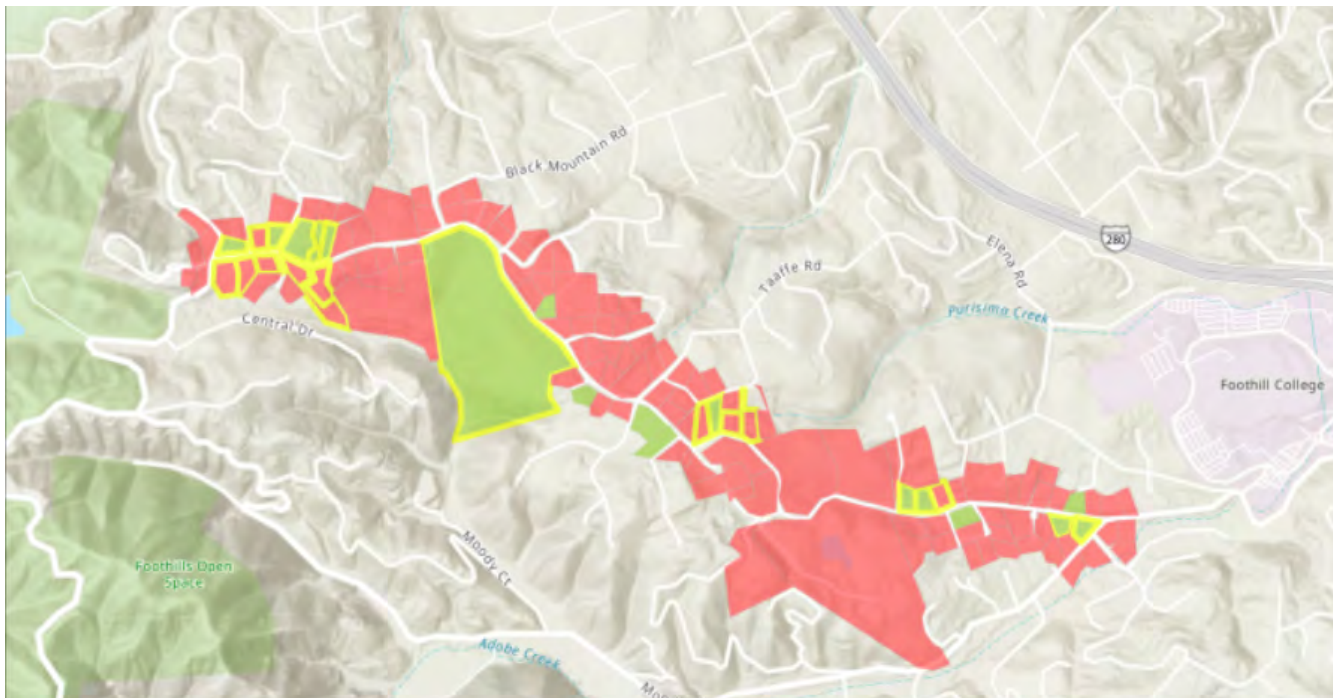
Santa Clara County FireSafe Council

14380 Saratoga Ave. Saratoga CA, 95070
Phone (408) 975-9591 • www.SCCFireSafe.org



Right of Entry (ROE) forms. We always strive for 100 percent participation, but every project has a few property owners with reservations. An average participation rate is around 30% for first time maintenance projects (with the goal of 100% participation). SCCFSC extended the timeframe for ROE forms to be returned. The ROE forms were mailed out February 28, 2022 and were due back May 6, 2022 allowing at least two months for submission. The staff of LAHCFD executed door knocking from Mar 19, 2022 to Apr 6, 2022 in efforts to get as much community involvement as possible.

Altamont Road Evacuation Route Project (Parcel Map)



Biological Precautions:

As with all of our projects, protecting the biodiversity of the area is a high priority. A biological survey was conducted on May 9th by Dudek, the week before the project started. The biologist identified and flagged wood rats nests, active birds nests, and any habitat within the treatable area. The biological review was completed during nesting season so that was taken into consideration. Heritage trees were identified during the field verification stage and were not included in the work plan. Finally, a buffer of 25 feet was implemented along stream beds and seasonal waterways.



Santa Clara County FireSafe Council

14380 Saratoga Ave. Saratoga CA, 95070
Phone (408) 975-9591 • www.SCCFireSafe.org



Project Duration:

The project started on Monday, May 16, 2022 and completed on Wednesday, May 25, 2022. We did not encounter any red flag days or call off work during this project.

Jurisdictions And Funders Involved:

Santa Clara County FireSafe Council, Los Altos Hills County Fire District, Santa Clara County, and Town of Los Altos Hills

Contractors Selected:

Statewide Safety Systems and Dudek were selected due to scheduling availability. Miabella Expert Tree Service was the contractor selected for multiple reasons; capacity to finish the project in the time given, the availability of reserve equipment in case of a breakdown, and large group of employees. The selection of Miabella was, in part, due customer service Miabella has provided in past projects. It is also important to well acquaint multiple contractors with the scope of work Los Altos Hills County Fire District is expecting on these projects.



Santa Clara County FireSafe Council

14380 Saratoga Ave. Saratoga CA, 95070
Phone (408) 975-9591 • www.SCCFireSafe.org



Project Photos:



We provide weed abatement as part of our project work to reduce fuels on the ground. In this single photo, the left side area is before weed abatement and the right side area on the photo is after weed abatement.



Santa Clara County FireSafe Council

14380 Saratoga Ave. Saratoga CA, 95070
Phone (408) 975-9591 • www.SCCFireSafe.org



Before



After



Santa Clara County FireSafe Council

14380 Saratoga Ave. Saratoga CA, 95070
Phone (408) 975-9591 • www.SCCFireSafe.org



Before



After



Santa Clara County FireSafe Council

14380 Saratoga Ave. Saratoga CA, 95070
Phone (408) 975-9591 • www.SCCFireSafe.org



Before



After



Santa Clara County FireSafe Council

14380 Saratoga Ave. Saratoga CA, 95070
Phone (408) 975-9591 • www.SCCFireSafe.org



By The Numbers:

- Area treated – 4.41 miles going NW on Altamont Rd towards Page Mill Rd then turning around to treat the other side of the road going SE toward Moody Rd. Most of which was treated 15 to 30 feet from the edge of the road unless marked for riparian area. On ROE properties treatment extended 30-50 feet from the edge of the road if needed. The daily average was 0.55 miles per day.
- Acres treated = 9.74 with an average of 1.2 acres treated per day.
- No poison oak was treated during this project, but the location of poison oak was documented on Avenza Maps.
- 8 days of treatment conducted by Miabella Expert Tree Services.



Santa Clara County FireSafe Council

14380 Saratoga Ave. Saratoga CA, 95070
Phone (408) 975-9591 • www.SCCFireSafe.org



We overcame many challenges to complete this critical part of growing the evacuation route and vegetation treatment system in Santa Clara County. This project also supports goals in the LAHCFD CWPP annex as well as the overall Community Wildfire Protection Plan.

We would like to acknowledge the contribution made by Miabella Expert Tree Service and Statewide Safety Systems. Both entities were committed to assisting Santa Clara County FireSafe Council with the project from start to finish. Statewide Safety Systems provided three traffic control personnel every day to make sure that the work could be done in a safe manner. With the Altamont Rd. on a downslope windy road with multiple driveways, the third traffic control personnel was necessary for the safety of the tree crews, SCCFSC staff, LAHCFD staff, and the general traffic and bicyclist in the Los Altos Hills area. SCCFSC staff was also provided a radio from the Statewide Safety Systems staff for constant communication. In addition, Miabella Expert Tree Services provided a translator each day to ensure maximum communication capabilities in an effort to provide complete safety coverage for the crews working and additional personnel on site. I'm happy to report, with Statewide Safety Systems traffic control coverage and the safe working practices of Miabella Expert Tree Services, we were able to finish the project with no reported injuries or incident reports. In addition to that, Byrne Preserve allowed our project crew to use their area for a staging area and provided bathrooms.

We would like to thank all the cooperators and property owners for all their support. If you have any questions or concerns please feel free to direct them to:

Irene Armstrong – Project Manager

e-mail: iarmstrong@SCCFiresafe.org

Phone: 650-516-6252

Jim Young – Senior Project Manager

e-mail: JimYoung@SCCFiresafe.org

Phone: 408-975-9591

**Integrated Hazardous Fuel Reduction Project
Altamont Road Evacuation Route and
Road Hardening Project 2022
Los Altos Hills County Fire District Cost Summary**

Contractor/Staff	Service	Project services completed (2022)	Amount
SCC FireSafeCouncil	IHFR Project management	May	16,397.01
SCC FireSafeCouncil	Project supplies (maps, safety vests)	May	65.33
Bay Area Traffic Control	Traffic control plan	February	500.00
Miabella Tree Service	Hazardous fuel reduction and biomass disposal	May	40,500.00
Statewide Traffic Safety & Signs	Project traffic control	May	20,167.50
Dudek	Environmental survey and report	May	1,687.76
Folger Graphics	Mailers, Postage, Banners, Signage	April	420.13
Zoom Media	Mailers, Banner, Signage Design	April	385.00
Jackson Ricketts	Data collection telemetry	May/June	6,300.00
David Barnett	Field project management (48 hours)	May	4,061.76
Denise Gluhan	Field project management (64 hours)	May	5,632.00
Altamont Road Evac. Route Hardening Project Cost Total:			96,116.49