



## **MEMORANDUM REPORT**

**Meeting Date:** February 21, 2023

**TO:** Board of Commissioners of the Los Altos Hills County Fire District

**FROM:** Arastradero Road Project Team,  
Ryan Cronin, Technical Analyst/Project Manager  
Denise Gluhan, Community Education & Risk Reduction Manager  
Eugenia Rendler, Programs, Planning and Grants Manager  
Reviewed by J. Logan, General Manager

**SUBJECT:** Arastradero Road Evacuation Route Project Final Reports

### **RECOMMENDATION:**

Receive Arastradero Road Evacuation Route Project Final Reports

---

### **BACKGROUND**

The Los Altos Hills County Fire District (District or LAHCFD) 2021/2022 Strategic Plan, Goal 3, Attachment 1, aims to mitigate fire risks and build community resiliency through Integrated Hazardous Fuel Reduction (IHFR), protection and prevention programs, Attachment 2. These programs are based on fire science, the LAHCFD Community Wildfire Protection Plan (CWPP) Annex 4, and the expenditures allocated in the annual District budget. IHFR projects are designed to enhance community resiliency, educate District residents, and reduce community fire hazards. In accordance with Goal 3, staff identified high fire risk areas and initiated collaborative solutions with regional partners including the Santa Clara County Central Fire Protection District (County Fire or Fire Department). The projects targeted roadside hazardous vegetation reduction on major transportation corridors such as Page Mill Road - Phase I and Phase II in 2020/2021, Moody/El Monte Roads in 2021, Altamont Road in spring 2022, and Arastradero Road in fall of 2022. The fundamental goal of these evacuation route and road hardening projects is to provide greater protection for life safety and to reduce property losses in the event of wildfire by providing safer egress and ingress for evacuees and emergency responders.

Santa Clara County FireSafe Council (SCCFSC) was the project manager for the Page Mill Road, Phase I and Phase II, Moody/El Monte Roads, Altamont Road and Arastradero Road projects that were designed to remove hazardous vegetation from the roadside and thereby create multiple evacuation

routes for egress and ingress in event of a wildfire or emergency incident. These LAHCFD evacuation route projects were successfully completed, resulting in greater public safety and alignment with LAHCFD's and Santa Clara County's evacuation initiatives.

The Arastradero Road evacuation route project was selected because it is a connecting road between the Page Mill Road evacuation route and Foothill Expressway. Arastradero Road provides an alternate route for egressing traffic flowing from Page Mill Road that may become congested at the onramps to Interstate 280. Additionally, Arastradero Road offers residents and travelers with two ways out from tributary roads including Fremont Road, La Cresta Drive, Purissima Road, and the neighborhood of Saddle Mountain.

The Arastradero Road project was unique in complexity regarding the number and nature of regional partners. Two notable partners were the California Department of Transportation (Caltrans) and Stanford University, Conservation Planning. LAHCFD will be working with these partners on upcoming evacuation route projects. Additional partners on the Arastradero Road project included the SCCFSC, the Town of Los Altos Hills, the City of Palo Alto, and Santa Clara County Roads and Airports.

The result of this project, the entire length of Arastradero Road, from the Page Mill Road Park-and-Ride lot to Old Adobe Road, received hazardous fuel reduction treatment. The treated areas are visually pleasing, with significantly less trash, and safer due to increased visibility.

Information about this project, and other District projects can be found on the Department website at <https://www.lahcfd.org/community-projects/>.

## **DISCUSSION**

The Santa Clara County FireSafe Council Final Report for the Arastradero Road Evacuation Route Project is Attachment 3. The District provides this Report and summary of costs for the project, Attachment 4. The Arastradero Road Evacuation Route Project was successful in attaining the goal of reducing hazardous fuel to provide for a safer evacuation route. Community outreach, regional partner collaboration, and trash elimination were additional benefits of the project.

A significant volume of trash was exposed by the removal of vegetation. This trash was unsightly, interfered with the work being done and presented another fuel source in the event of wildfire. Most of the discovered trash was collected and the Town of Los Altos Hills maintenance department disposed of it properly. Trash management will be incorporated into future project planning.

Stanford University Conservation Planning was significantly engaged with protecting the riparian area of Deer Creek that runs along the boundary of the university property adjacent to Arastradero Road. Deer Creek is a conservation easement that is a known habitat for the California red-legged frog and California tiger salamander. These amphibians are protected by the United States Department of the Interior Endangered Species Act. Stanford University provided guidelines for activities with the potential of impacting species that may be found in the creek. To comply with the act, sensitive habitat was identified and flagged so it would be avoided and left undisturbed. Work crews were briefed daily on the identification of the protected species, other native species and hazards and the appropriate actions and notifications should an animal or hazard be encountered.

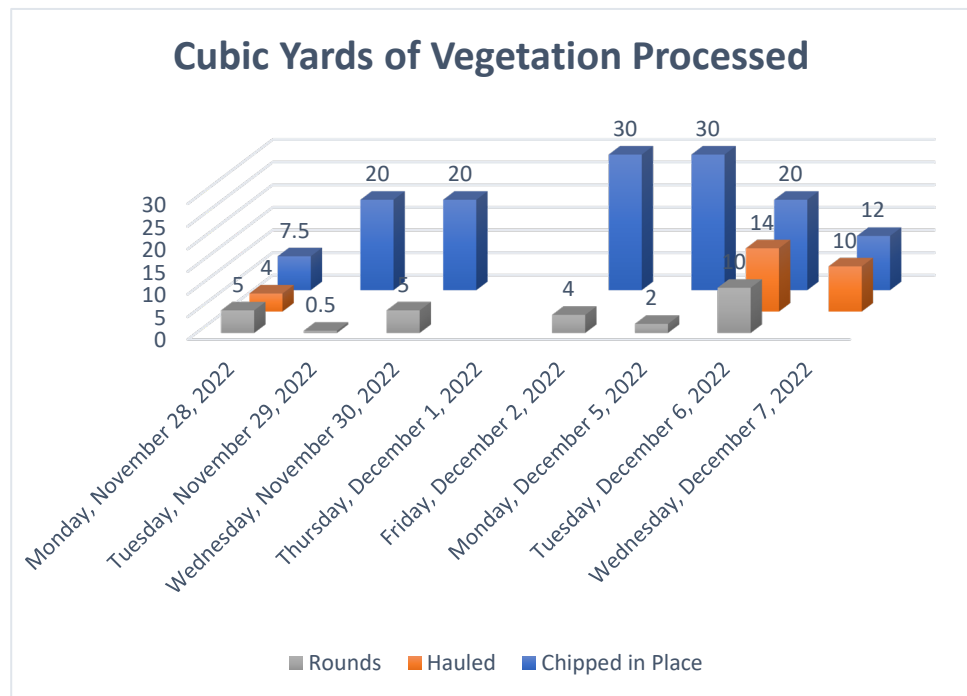
## QUANTITATIVE RESULTS and EXPENSES

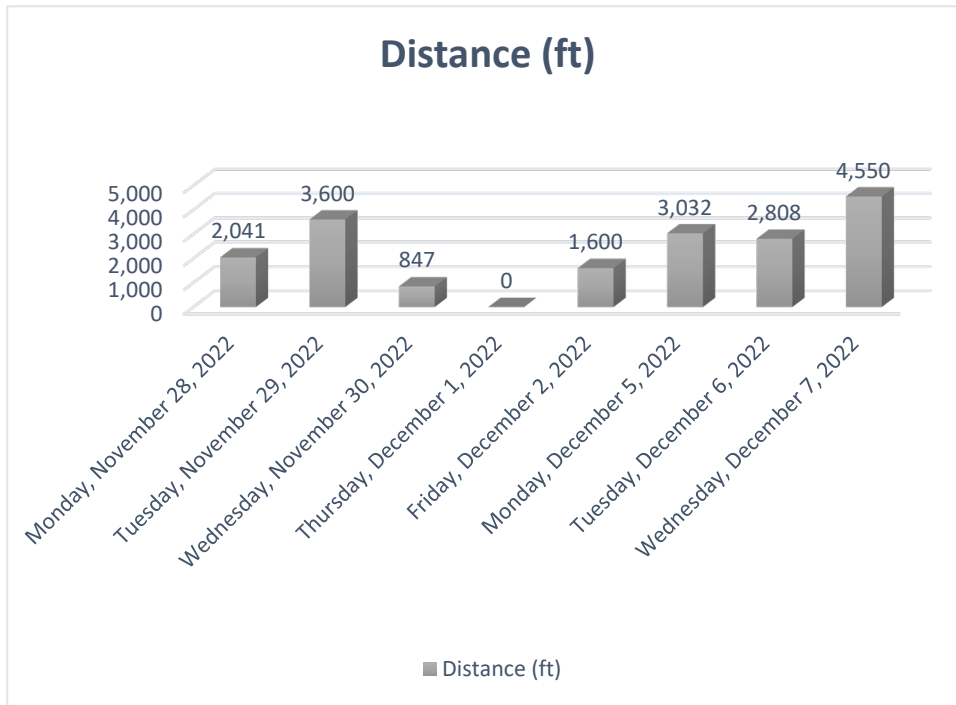
Date	Distance (ft)	Chipped in Place	Hauled	Rounds
Monday, November 28, 2022	2,041	7.5	4	5
Tuesday, November 29, 2022	3,600	20		0.5
Wednesday, November 30, 2022	847	20		5
Thursday, December 1, 2022	Rained Out			
Friday, December 2, 2022	1,600	30		4
Monday, December 5, 2022	3,032	30		2
Tuesday, December 6, 2022	2,808	20	14	10
Wednesday, December 7, 2022	4,550	12	10	
Total by process	18,478	139.5	28	26.5
<b>Total</b>	<b>3.5 miles</b>			<b>194</b>

Volume Measurements in Cubic Yards	
<b>Trash removed</b>	<b>7.5 cubic yards</b>

Production volume and distance of treatment give insight to the work being performed. For instance, on Wednesday, November 30<sup>th</sup>, the days' work focused on the Park-and-Ride lot resulting in minimal distance but significant volume. Conversely, the last day focused on trimming along the border fence with I-280, a long distance with modest volume.

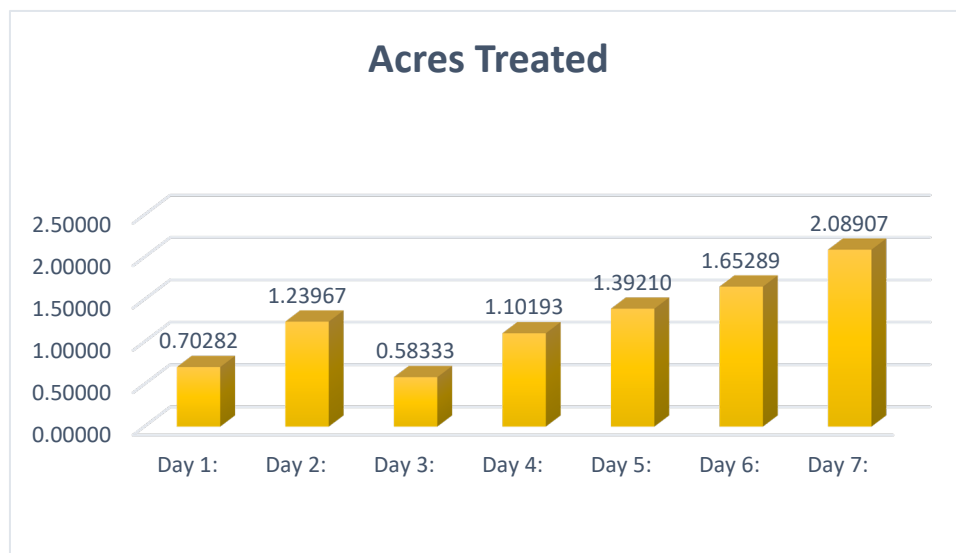




The depth of treatment from the roadway varied by terrain, easements, fencing and ornamental plantings. The average depth of treatment was determined per day and utilized to calculate area of treatment.

**Calculation of Acres Treated**

Day	Length	Depth	Sq. Ft.	Acres
Day 1:	2041	15	30,615	0.70282
Day 2:	3600	15	54,000	1.23967
Day 3:	847	30	25,410	0.58333
Day 4:	1600	30	48,000	1.10193
Day 5:	3032	20	60,640	1.39210
Day 6:	2880	25	72,000	1.65289
Day 7:	4550	20	91,000	2.08907
<b>Total</b>	<b>18550</b>		<b>381,665</b>	<b>8.76182</b>




<b>Contractor / Staff</b>	<b>Service</b>	<b>Project services completed</b>	<b>Amount</b>
SCC FireSafeCouncil	IHFR Project management.	Sept / Oct / Nov / Dec	\$11,820.19
SCC FireSafeCouncil	Project supplies (maps, safety vests)	Sept / Oct / Nov / Dec	\$217.13
SCC FireSafeCouncil	Personnel Mileage Reimbursement	Sept / Oct / Nov / Dec	\$250.80
Bay Area Traffic Solutions, Inc.	Traffic control plan	October	\$1,500.00
Bay Area Traffic Solutions, Inc.	Changeable Message Sign (CMS)	December	1,913.33
Bay Area Traffic Solutions, Inc.	Project Traffic control	November / December	\$46,401.60
Brush Hog Tree Care, Inc.	Hazardous fuel reduction and biomass disposal	November / December	\$54,404.00
Dudek	Environmental survey and report	November	\$3,922.31
Folger Graphics	Mailers, Postage, Banners, Signage	October	\$1,539.96
Zoom Media	Mailers, Banner, Signage Design	October	\$1,100.00
Jackson Ricketts	Data collection telemetry	November / December	\$7,850.00
Ryan Cronin	Field project management (48 hours)	Sept / Oct / Nov / Dec	\$5,860.00
Denise Gluhan	Field project management (64 hours)	Sept / Oct / Nov / Dec	\$4,628.00
<b>Arastradero Road Evac. Route Hardening Project Cost</b>		<b>Total:</b>	<b>\$141,407.31</b>


Costs directly associated with the Arastradero Road Evacuation Route Project.

Successes

- Effective utilization of Unmanned Aircraft Systems (UAS) for image telemetry. JACKSONS DRONES was contracted to provide aerial photos and to identify treatment areas, and quantitatively measure hazardous fuel reduction.




### Arastradero Evacuation Route: Results by the Numbers



This roadside project reduced flashy fuels and created spacing in the canopy of the trees

#### RESULTS

Total Acres Treated	20.61 Acres including roadway
Bio-mass/ vegetation Removed	210 Cubic yards (Adjusted)
Bio-mass/ vegetation chipped & distributed	143 Cubic yards
Reduction of total canopy area	950 square feet



By reducing volume of fuels and continuity in the canopy and flash fuels, the projects reduces chances for ignitions to grow or for fire to run along the treetops as a larger or catastrophic fire.

**AIR METRIX**

- As was done with previous projects, LAHCFD staff collected data before and after the project with ground photos to dramatically show the fuel reduction.

An ignored Eucalyptus tree with a dead off-shoot overhanging the path and a precarious side growth threatening to fall on Arastradero Road and block egress.

## Before Treatment



## After Treatment



The Park-and-Ride lot is now safer with good visibility to deter crime. Trees and bushes now look balanced after a significant amount of overgrowth was removed.

- Established robust relationships with Regional Partners LAHCFD will be working with on future projects, notably Caltrans and Stanford University There were thirty-two parcels that abutted the project route. LAHCFD staff successfully obtained Right of Entry (ROE) permits for nineteen parcels where treatment depth needed to be greater than the roadway or trail easements.
- With assistance of County Counsel, the project team completed CEQA requirements by filing a Notice of Exemption (NOE) through the Office of the Santa Clara County Clerk. By filing the NOE, LAHCFD utilized a process that notified the public of the proposed mitigation work, provided the public the opportunity to voice concerns, and if concerns were expressed, allowed for time to address, and remedy the concerns prior to commencing the project. No concerns were received, and the project commenced as planned.
- Recognition that the insurance industry is now incentivizing the high value of hazardous vegetation management programs to reduce the threat of wildfire and property losses. LAHCFD efforts strongly support the Office of the Insurance Commissioner's Initiative for the insurance industry to recognize wildfire mitigation efforts as a benefit to the insured.
- Appreciation is expressed for the dedicated support of the LAHCFD Board of Commissioners, the Fire Department, Town of Los Altos Hills, Santa Clara County FireSafe Council, and the contractor, crews and traffic control involved in the success of the project.
- The Arastradero Road Evacuation Route Project enhances and refines staff experience necessary for improvement of future evacuation road projects. Future projects will seek more community input to guide the upcoming road evacuation route designs.



#### Community Outreach

LAHCFD staff promoted this project, and the other programs of the District, through several outreach activities.

- Letters were mailed to all property owners along the project. They were offered the opportunity to make inquiries, and have their property participate in the vegetation management efforts.
- Community Outreach was conducted to local cycling organizations and bicycle shops to inform the local biking community of trail and lane closures along this very popular bike route, advise the use of alternative routes and increase the safety of bikers during the roadside work. An outreach flyer was shared, published, and posted with the cooperation of the cycling organizations and bicycle shops. Attachment 4.
- LAHCFD staff walked the project route, door knocking, and spoke with residents about the project, made ROE requests, and promoted other District programs.
- Sandwich board signs were posted at strategic entry points to the project, two weeks before the project commenced, alerting hikers, bikers, and motorists to the upcoming work.
- Spontaneous contacts and interactions with the community provided staff the opportunity to educate citizens about the project as well as other District programs and services.

During these community contacts, recognition and gratitude from the community and agencies for the public safety benefits of the project were received.

### Insights/Lessons Learned

- Larger branches, limbs, and trunks that cannot be chipped must be thoughtfully dealt with. These are natural biomass and are appropriate for the environment. Eucalyptus trees have a stigma that they are not native and pose an increased fire risk. While all plants that produce oils and shed flash fuels, removal of eucalyptus peelings and debris is a savvy action to prioritize both for fuel reduction to avoid unnecessary confusion in the debate over nonnative plant species.
- In some instances, it is appropriate to leave larger logs and rounds on the ground in positions and areas where they will not roll down slope. At this size, these are not flash fuels, and have a low ignition potential. Their decomposition acts to recycle nutrients into the soil for plants, provide habitat for amphibians, small reptiles, and other small creatures vital to the food web in our natural areas and wildland urban intermix.
- Ensure flexibility of the project plan to accommodate potential staffing issues. Contingency plans could include having additional crewmembers, tools and a second chipper to provide resources to meet project timeline in case of staffing issues or equipment failures. Focus on key parcels was effective to increase participation of residents to grant ROE access in strategic locations along the route. Preparation, outreach, and education of residents along the route of key parcels resulted in several ROEs that allowed for critical work to be completed.
- Crew production rates are impacted by heat and weather. As opposed to the Altamont project in the spring, Arastradero was completed in December and had rain delays. The field crews were prepared for this possibility and pivots were in place that allowed the project to be completed in the week it was originally planned to be done. Interactions with community spontaneously, at events and during field projects are a key component of participation and success of each fuel reduction project. As with previous projects, residents who did not participate in the project became aware of the value and will have the opportunity to participate in the future when projects receive maintenance services for vegetation mitigation.
- Daily briefings with field operations. Field Operations gets momentum once a project starts. It is imperative to take a pause and review the scope of work, safety items and objectives daily.
- Additional meetings for special easements, i.e., Stanford University and Caltrans. Larger organizations tend to be more bureaucratic and may have more stakeholders. Additional communication and time to engage all parties will help flush out concerns and requirements resulting in a smoother execution of the project.
- Trash was a disheartening reality of this project. Removing the trash was healing and beautifying. Thank you again the Town of Los Altos Hills maintenance department for facilitating the disposal. Much of the disposed trash included recyclable materials. LAHCFD staff will explore partnering with local community organizations, such as Scouts of America, to facilitate sorting and recycling the trash on future projects.



As a result of the collaboration and coordination between LAHCFD and its partners, the Arastradero Road Evacuation Route Project was successful and provided a strategic and high priority public safety benefit to the community in the event of a wildfire or emergency incident. LAHCFD thanks the team, contractors, Commissioners, community members and partner agencies for their contributions to and support of this project.

**Attachment(s):**

1. LAHCFD 2021-2022 Strategic Plan Summary Chart of Six Goals
2. [LAHCFD Chart of Services, V11, 3/01/2022](#)
3. Santa Clara County FireSafe Council Final Report: Arastradero Road Evacuation Route Project
4. Cyclist Notification



<p>Goal</p>	<p>1. Engage Community and partners to review and update the LAHCFD Community Wildfire Protection Program (CWPP) Annex 4 and Addendum for Residents Annex 4 is our local CWPP which describes wildfire hazards and mitigation measures to meet our community’s unique local, social, and ecological characteristics. We are updating these guiding documents periodically to conform to current fire science knowledge and capture lessons learned from increasingly severe wildfire occurrences.</p>	<p>2. Align District operations with County-wide fire protection goals and County recommendations As a Dependent District of the County, the LAHCFD operates within parameters established by the County and participates in the County and LAFCO County-wide fire protection studies as a regional partner.</p>	<p>3. Mitigate risk and build community resiliency through integrated hazardous fuel reduction, protection and prevention programs As illustrated in the Forward Looking Resiliency <a href="#">Chart</a>, fund, create and implement programs based on fire science, CWPP/Annex 4 and the annual budget to enhance community resiliency, educate District residents and reduce community hazards.</p>	<p>4. Develop policies and processes for management of District’s water systems of hydrant and hydrant infrastructure for protection of property, life-safety &amp; support of fire suppression systems Continually improve community fire protection through District’s water system of 540 hydrants and infrastructure; develop a studied approach to issues related to District-owned hydrants and hydrant infrastructure.</p>	<p>5. Deliver community services that support emergency response and build programs of outreach, communication, education and regional benefits Collaborate with regional partners to strengthen community resilience, transparency and effectiveness of local government programs. Continue to identify opportunities to use District resources to benefit a broader regional area in support of common interests.</p>	<p>6. Adapt organization and allocate resources to promote stability and sustainability of the District to continue its operations as a valued local Special District. Optimize organizational structure to align with the District’s Mission and Goals; utilize available resources and adapt to a regional approach for community resiliency.</p>
<p>Objectives</p>	<p>a. Develop a timeline for action steps for a public process with stakeholders and community members</p> <p>b. Identify experts and resources to be consulted during this process</p> <p>c. Research and hold meetings with experts</p>	<p>a. Reporting process to County: Adhere to County Mgmt Audit recommendations, prepare &amp; deliver monthly reports to County Committees and Mgmt Audit Division</p> <p>b. Participate in LAFCO county-wide fire services review and</p>	<p>a. Identify high fire risk areas; initiate collaborative solutions with regional partners and SCCFD</p> <ul style="list-style-type: none"> <li>• Target roadside fuel reduction</li> <li>• Target open space fuel reduction</li> <li>• Enhance vegetation management</li> </ul> <p>b. Continue to partner with regional organizations to support Home Ignition Zone (HIZ) surveys of properties and provide action</p>	<p>a. Develop policies and guidelines for hydrant and infrastructure location, replacements and additions; and evaluate pipeline resiliency when opportunities for improvements occur in coordination with County Central Fire,</p>	<p>a. Explore joint projects with neighboring agencies that affect our overlapping and adjacent service areas to provide resilience from wildfire and other disasters</p> <p>b. Support, encourage and revitalize Los Altos Hills Community Emergency Response Team (CERT) Program</p> <p>c. Support, encourage and revitalize Amateur Radio operator activities</p>	<p>a. Participate in LAFCO county-wide fire protection services review and County comprehensive review of fire services study; evaluate structure in context of these proceedings</p> <p>b. Provide resources to maintain a sustainable</p>



	<p>and resources to identify current best practices for CWPP</p> <p>d. Collaborate with Central Fire Dept personnel to align Annex 4 CWPP with County regional fire protection plan</p> <p>e. Upon completion of CWPP Annex 4, revise Addendum Guide for Residents</p> <p>f. Create a communication plan for residents and stakeholders to educate those who live in and work with the District to understand the revised CWPP Annex 4</p> <p>g. Obtain updated maps, integrate into GIS mapping</p>	<p>County comprehensive review of fire services</p> <p>c. Establish District records in a manner consistent with County policies and procedures for record management systems and retention schedules</p> <p>d. Work with County Counsel to identify District parameters for capital expenditures and any other requirements for allocation of District resources</p> <ul style="list-style-type: none"> <li>• Conform to County procurement policies, procedures and State requirements under the public contracting codes</li> </ul>	<p>items for life and property fire safety</p> <p>c. Consider incentives, consistent with CWPP and County Mgmt Audit, to reduce fire fuel load and to motivate property hygiene and home hardening against fire danger</p> <p>d. Create certificate of completion for HIZ participants to provide to their homeowner’s insurance carrier</p> <p>e. Use technology to strategically target fuel mitigation program delivery (GIS for brush chipping, shaded fuel breaks)</p> <p>f. Seek resident, vendor, staff and volunteer input for continuous improvement feedback to create, enhance and expand programs</p>	<p>engineering consultants and water purveyors</p> <p>b. Develop hydrant and infrastructure mapping and asset identification system utilizing GIS</p> <p>c. Supplement local and regional fire suppression capabilities through funding of portable pumper vehicle</p>	<p>d. Support and maintain the ARK and emergency supply containers and equipment</p> <p>e. Plan and host evacuation drills</p> <p>f. Continue using existing communication tools, including social media, while evaluating new technology and regional resources to educate community and align outreach communications with neighboring agencies</p> <p>g. Expand outreach by evaluating new opportunities to drive community to website to find current updates and critical information</p> <p>h. Continue to assess early notification advisories and ways to improve participation by District residents</p>	<p>administration to meet District operational needs</p> <p>c. Develop efficiencies for administration through utilization of County Departments to augment staff expertise and capacity</p> <p>d. Create succession plan to support continuity in staffing</p> <p>e. Ensure budget decisions are consistent with Strategic Plan and fiscally sustainable</p> <p>f. Identify adequate space for training, District meetings and District assets</p> <p>g. Explore opportunities for grant funding to augment District services</p> <p>h. Repurpose use of District parcel to expand fire protection response capability for local and regional benefit</p>
--	--	--	---	--	---	--

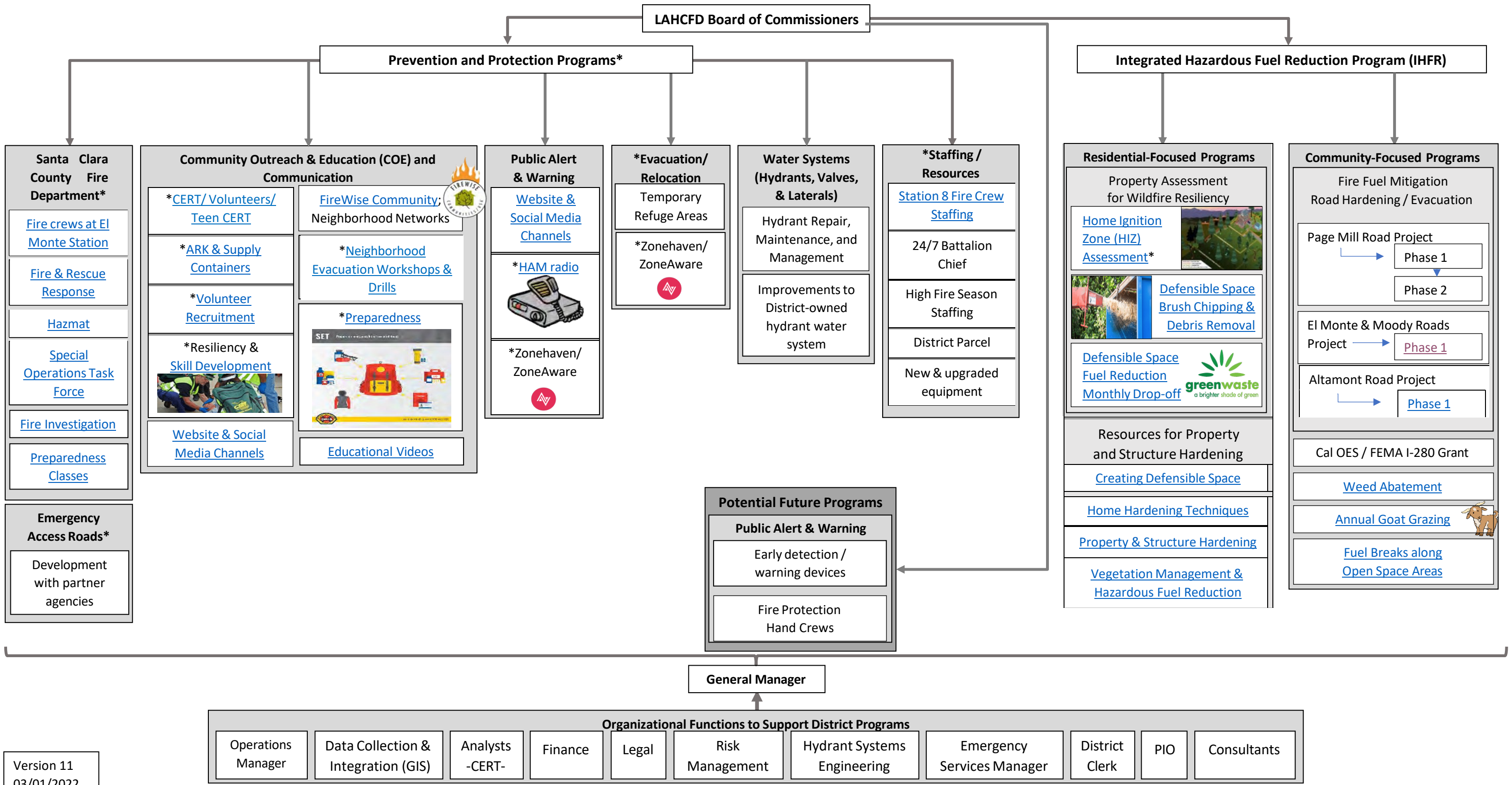
**LEGEND**  
 \*Indicates programs are delivered in collaboration with partner agencies  
 Underlined text indicates a clickable link

**LAHCFD Chart of Services**  
 Built on Fire Science & LAHCFD-CWPP Annex 4

**ATTACHMENT 2**

Guided by Strategic Plan 2021 – 2022 – Resourced by FY Budget

For more information on LAHCFD Programs and how to participate, please visit: [www.LAHCFD.org](http://www.LAHCFD.org)  
 An interactive version of this chart can be viewed here: [www.lahcfd.org/governance/ForwardLookingCommunityResiliency](http://www.lahcfd.org/governance/ForwardLookingCommunityResiliency)

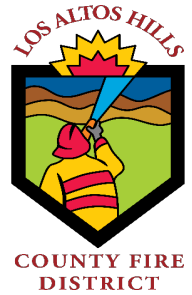




# **Santa Clara County FireSafe Council**

14380 Saratoga Ave. Saratoga CA, 95070  
Phone (408) 975-9591 • [www.SCCFireSafe.org](http://www.SCCFireSafe.org)

ATTACHMENT 3



## **FINAL REPORT** **Arastradero Rd. Evacuation Route**

**December 15, 2022**

### **Introduction:**

In cooperation with Los Altos Hills County Fire District (LAHCFD), the Santa Clara County Fire Safe Council (SCCFSC) executed an Evacuation Route on Arastradero Rd, located in Los Altos Hills, California. This evacuation route can potentially be utilized for evacuation during a wildfire incident. The project implementation will enhance fire resiliency by reduced ladder fuels, reduced roadside fire ignition opportunities, reduced invasive species, and improved evacuation routes. This project added to Santa Clara County's developing evacuation route and vegetation management systems and provided opportunities to protect or manage watersheds in the event of future wildfires. Additionally, reduced competition in the understory and treating hazard trees where feasible will create a healthier and more vigorous forest. The treated area serves multiple mountain communities and many residences travel along this path every day. Arastradero Rd in Los Altos Hills, California, represents a significant thoroughfare for the Los Altos Hills Community. From the Caltrans Park and Ride on Arastradero Rd and Page Mill Rd then southeast to the intersection of Old Adobe Rd and Arastradero Rd.

### **Cooperators:**

There were multiple agencies, contractors, property owners, and organizations that contributed to the project; Santa Clara County Fire Safe Council, Los Altos Hills County Fire District, Bay Area Traffic Solutions, Brush Hog Tree Care, Caltrans, Stanford University, the County of Santa Clara, County Road and Airports, and the Town of Los Altos Hills to name a few.

### **Goals For This Project:**

1. Remove ladder fuel vegetation on the ground, limb up trees and remove accumulated dead fuel build up along the roadway.
2. Remove previously downed smaller trees that may pose a fire hazard during drier months.
3. Conduct hazardous fuel reduction up to 10'- 30' from the road edge to help provide a safer evacuation route in the event of an actual wildfire.
4. Removal of hazard trees; dead, dying, under-slung and overhanging that may fall on the roadway during extremely windy conditions.
5. No live trees (either native or non-native) that are large enough to require a tree removal permit are removed.
6. Prune live trees amounting to less than 25% of the canopy.
7. Trimmings and chips from trees and brush are broadcast back onto the roadside.
8. Chipped material spread over the treatment area.
9. Remove Dead trees in close proximity to the roadway.
10. Increase visibility for intersections and driveway turn outs.

### **Project Site:**



# Santa Clara County FireSafe Council

14380 Saratoga Ave. Saratoga CA, 95070  
Phone (408) 975-9591 • [www.SCCFireSafe.org](http://www.SCCFireSafe.org)

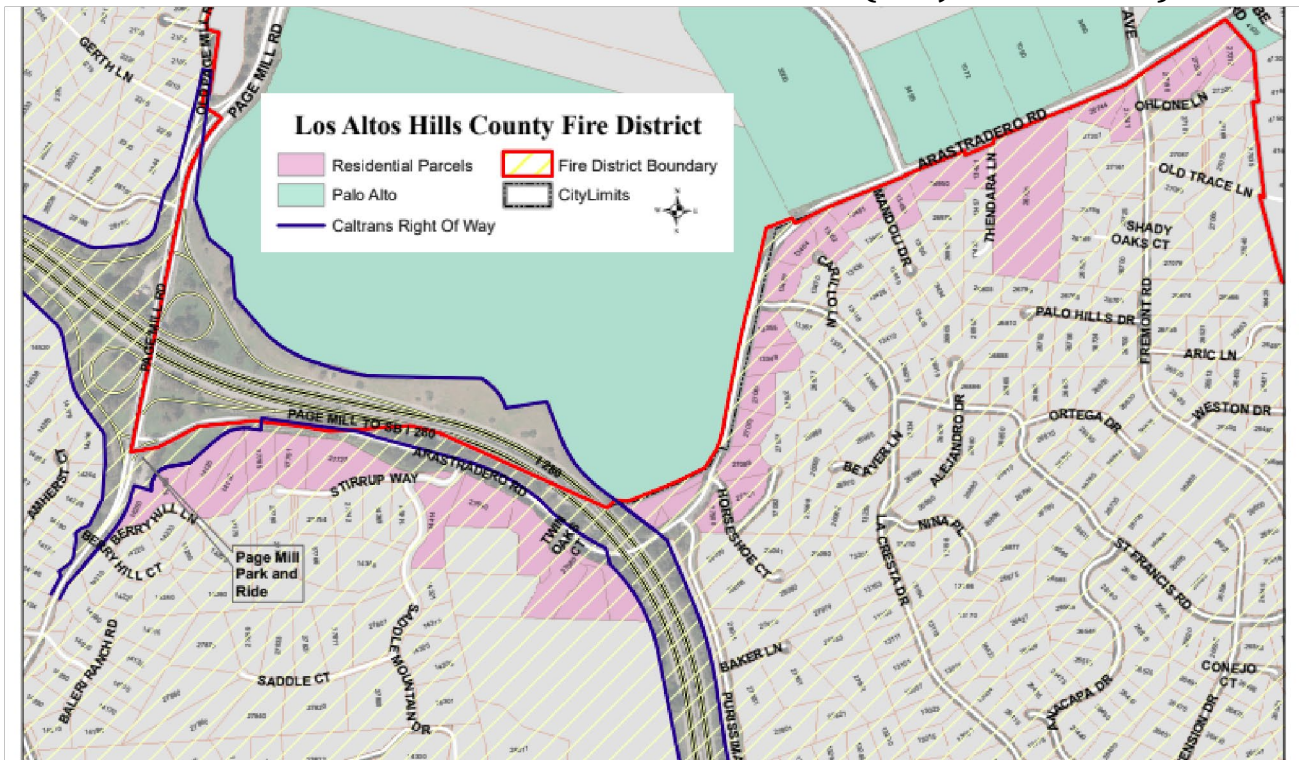
ATTACHMENT 3



COUNTY FIRE DISTRICT

Treatment of vegetation was on the Town of Los Altos Hills right of way (15ft from the road) and properties along Arastradero Rd. that submitted Right of Entry permits received 30-50 feet depth. The project site was at Arastradero Road, started at the Caltrans Park and Ride lot on Arastradero Rd and Page Mill Rd then headed southeast to the intersection of Old Adobe Rd and Arastradero Rd. The Caltrans Park and Ride was closed and vegetation management was done on this parcel.

## Arastradero Road Evacuation Route (Project Location)



### Permissions:

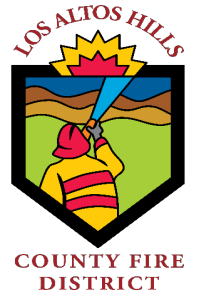
One of the biggest challenges in these types of projects is getting permission to treat the properties. During planning of the project, we conducted an extensive public outreach effort to get the permissions needed. It included mailers, newspaper articles, door-to-door visits, and a social media campaign. We were able to include 19 of the 41 parcels involved. This represents 46% participation for the completion of the project. Prior to the project, LAHCFD staff conducted a survey of the area to identify key parcels within the project scope. We always strive for 100 percent participation, but every project has a few property owners with reservations. An average participation rate is around 30% for first time maintenance projects (with the goal of 100% participation). SCCFSC's timeframe for ROE forms to be returned was 30 days with a due date of October 31st. The staff of SCCFSC and LAHCFD executed door knocking on November 4, 2022, in efforts to get as much community involvement as possible.



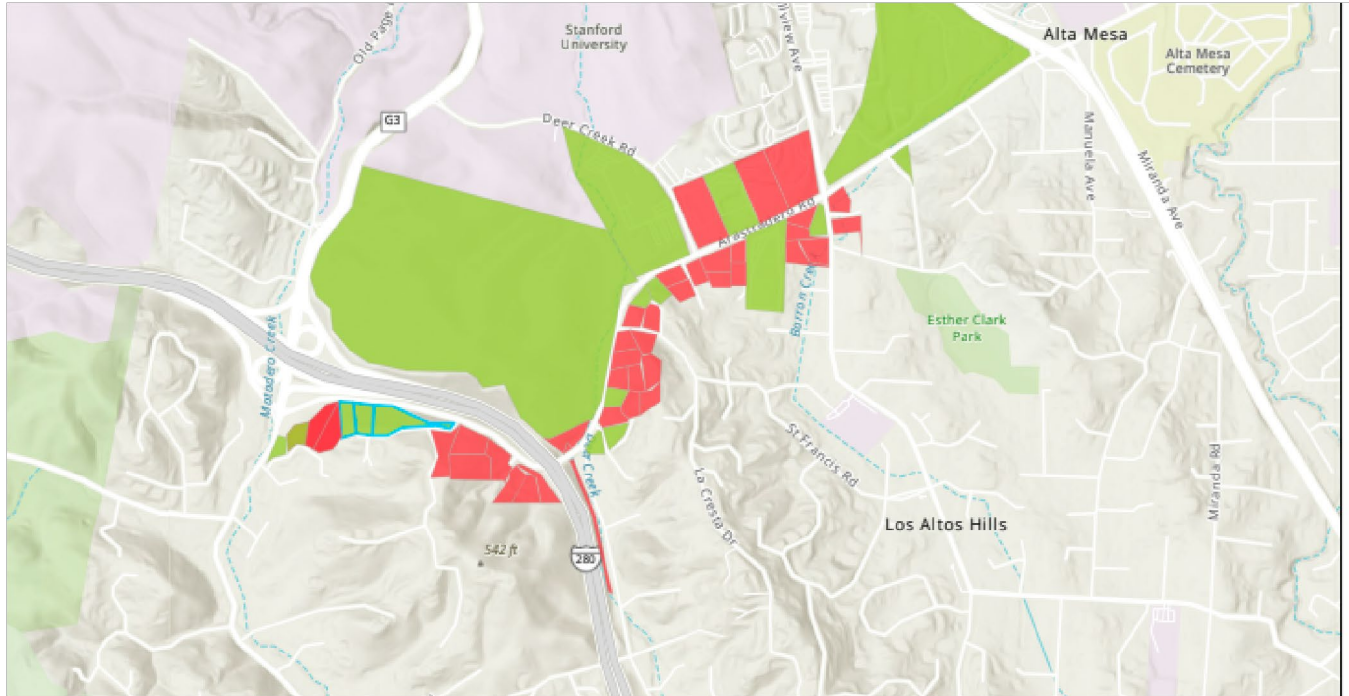
# Santa Clara County FireSafe Council

14380 Saratoga Ave. Saratoga CA, 95070  
Phone (408) 975-9591 • [www.SCCFireSafe.org](http://www.SCCFireSafe.org)

ATTACHMENT 3



## Arastradero Road Evacuation Route Project (Parcel Map)



### Biological Precautions:

As with all of our projects, protecting the biodiversity of the area is a high priority. A Biological Survey was conducted on November 21st by Dudek, the week before the project started. The biologist identified and flagged wood rats' nests, active birds' nests, and any habitat within the treatable area. The biological review was completed outside of nesting season. Heritage trees were identified during the field verification stage and were not included in the work plan. Finally, a buffer of 25 feet was implemented along stream beds and seasonal waterways.

### Project Duration:

The project started on Monday, November 28, 2022, and completed on Wednesday, December 7, 2022. We did not encounter any red flag days. We did encounter one rain day and called off work on Thursday, December 1, 2022.

### Jurisdictions And Funders Involved:

Santa Clara County Fire Safe Council, Los Altos Hills County Fire District, Santa Clara County, County Roads and Airports, Stanford University, and Town of Los Altos Hills

### Contractors Selected:

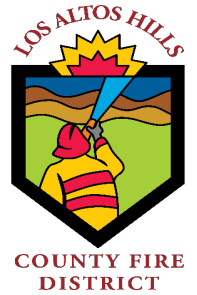
Dudek was selected due to scheduling availability.



# Santa Clara County FireSafe Council

14380 Saratoga Ave. Saratoga CA, 95070  
Phone (408) 975-9591 • [www.SCCFireSafe.org](http://www.SCCFireSafe.org)

ATTACHMENT 3



Bay Area Traffic Solutions was selected due to its certification with Caltrans and experience with Caltrans. SCCFSC had an existing PO with BATS for a CMS rental to close the Caltrans Park and Ride lot and their traffic control bid was competitive. Also, would like to rotate the use of traffic control vendors for these Evacuation route projects in Los Altos Hills.

Brush Hog Tree Care was selected for this project. The selection of Brush Hog Tree Care was due to the introduction of a new contractor for these evacuation route projects in Los Altos Hills and for the competitive and lowest bid. It is also important to well acquaint multiple contractors with the scope of work Los Altos Hills County Fire District is expecting on these projects.

### Project Photos:

		
<b><u>Before</u></b>	<b><u>During</u></b>	<b><u>After</u></b>



# Santa Clara County FireSafe Council

14380 Saratoga Ave. Saratoga CA, 95070  
Phone (408) 975-9591 • [www.SCCFireSafe.org](http://www.SCCFireSafe.org)

*ATTACHMENT 3*



COUNTY FIRE DISTRICT

 A photograph showing a paved road with yellow double lines, lined with tall, thin pine trees under a clear blue sky. The road curves to the right in the distance.	 A photograph showing the same paved road with yellow double lines, but the tall pine trees have been replaced by shorter, denser trees. The sky is blue with some white clouds.
<p><b><u>Before</u></b></p>	<p><b><u>After</u></b></p>



# Santa Clara County FireSafe Council

14380 Saratoga Ave. Saratoga CA, 95070  
Phone (408) 975-9591 • [www.SCCFireSafe.org](http://www.SCCFireSafe.org)

*ATTACHMENT 3*



COUNTY FIRE DISTRICT



**Before**



**After**



# Santa Clara County FireSafe Council

14380 Saratoga Ave. Saratoga CA, 95070  
Phone (408) 975-9591 • [www.SCCFireSafe.org](http://www.SCCFireSafe.org)

*ATTACHMENT 3*



COUNTY FIRE DISTRICT



Before



After



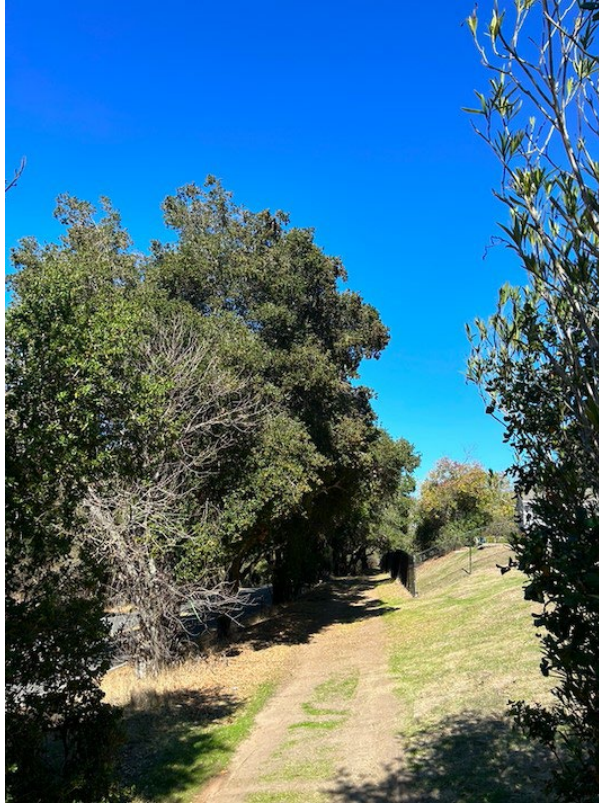
# Santa Clara County FireSafe Council

14380 Saratoga Ave. Saratoga CA, 95070  
Phone (408) 975-9591 • [www.SCCFireSafe.org](http://www.SCCFireSafe.org)

*ATTACHMENT 3*



COUNTY FIRE DISTRICT



**Before**



**After**



# Santa Clara County FireSafe Council

14380 Saratoga Ave. Saratoga CA, 95070  
Phone (408) 975-9591 • [www.SCCFireSafe.org](http://www.SCCFireSafe.org)

ATTACHMENT 3



COUNTY FIRE DISTRICT



### **By The Numbers:**

- Area treated – 3.34 miles total area treated for both sides of Arastradero Rd. Most of which was treated 15 to 30 feet from the edge of the road unless marked for riparian area. On ROE properties treatment extended 30-50 feet from the edge of the road if needed. The daily average was 0.47 miles per day.
- Acres treated = 8.30 acres with an average of 1.19 acres treated per day.
- No poison oak was treated during this project, but the location of poison oak was documented on Avenza Maps.
- 7 days of treatment conducted by Brush Hog Tree Care.

We overcame many challenges to complete this critical part of growing the evacuation route and vegetation treatment system in Santa Clara County. This project also supports goals in the LAHCFD CWPP annex as well as the overall Community Wildfire Protection Plan.

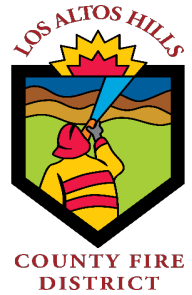
We would like to acknowledge the contribution made by Brush Hog Tree Care and Bay Area Traffic Solutions. Both entities were committed to assisting Santa Clara County Fire Safe Council with the project from start to finish. Bay Area Traffic Solutions provided three to four traffic control personnel every day to make sure that the work could be done in a safe manner. With Arastradero Rd. being a commuter road



## Santa Clara County FireSafe Council

14380 Saratoga Ave. Saratoga CA, 95070  
Phone (408) 975-9591 • [www.SCCFireSafe.org](http://www.SCCFireSafe.org)

ATTACHMENT 3



with multiple driveways to Stanford University and large company buildings, high bike traffic route, and a connection directly to the interstate 280 the third and fourth traffic control personnel was necessary for the safety of the tree crews, SCCFSC staff, LAHCFD staff, and the general traffic and bicyclist in the LAH area. SCCFSC staff and Brush Hog Tree Care were provided a radio from the Bay Area Traffic Solutions staff for constant communication. In addition, Brush Hog Tree Care provided a translator each day to ensure maximum communication capabilities in an effort to provide complete safety coverage for the crews working and additional personnel on site. I'm happy to report, with Bay Area Traffic Solutions traffic control coverage and the safe working practices of Brush Hog Tree Care, we were able to finish the project with no reported injuries or incident reports. In addition to that, Los Altos Hills County Fire District allowed our project crew to use their area for a staging area.

We would like to thank all the cooperators and property owners for all their support. If you have any questions or concerns, please feel free to direct them to:

***Irene Armstrong*** – Project Manager e-mail:  
[iarmstrong@SCCFiresafe.org](mailto:iarmstrong@SCCFiresafe.org) Phone: (650) 516-6252

***Nestor Valle*** – Project Coordinator e-mail:  
[nvalle@sccfiresafe.org](mailto:nvalle@sccfiresafe.org)

***Amanda Brenner-Cannon*** – Program  
Director  
e-mail: [abrennecannon@sccfiresafe.org](mailto:abrennecannon@sccfiresafe.org)



## ATTENTION CYCLISTS !

# ARASTRADERO ROAD WILDFIRE SAFETY & EVACUATION ROUTE PROJECT

UPCOMING LANE CLOSURE, NOV 28 - DEC 9, 2022

### Important wildfire safety project on Arastradero Road

- For your safety, lane closure with one-way traffic control will be required during roadside work to reduce hazardous fire vegetation.
- The edge and shoulder of the road will be cleaned of debris.
- Shade trees will remain to provide shade and keep the area cool.
- Trees that are leaning or could fall into the roadway will be assessed for removal.

## CYCLISTS, FOR YOUR SAFETY !

Please consider avoiding this area  
Weekdays NOV 28—DEC 9



THANK YOU!

For more information, visit [www.LAHCFD.org](http://www.LAHCFD.org)