



FIRE DEPARTMENT SANTA CLARA COUNTY



14700 Winchester Blvd., Los Gatos, CA 95032-1818
(408) 378-4010 • (408) 378-9342 (fax) • www.sccfd.org

June 4, 2014

Los Altos Hills County Fire District Commissioners
12355 El Monte Road
Los Altos Hills, CA 94022

Subject: Fire Report for May 2014

To Whom It May Concern:

The May 2014 fire reports for the Los Altos Hills County Fire District are enclosed:

1. Average Response Time: This report computes the average response time it took for each first-in unit to arrive on scene. The clock starts ticking at the instant the dispatcher makes his or her first keystroke at the command panel (after the call has been handed-off by the Emergency 911 telephone handler.)

The average response times for Code 3 calls were as follows:

Engine 75: 5.42
Engine 76: 5.65
Rescue 74: 5.90

2. Incident Summary: This outlines the frequency of "types of calls" for every emergency vehicle that was the first unit on scene. Other information provided is fire loss data and frequency of non-fire calls.

The fire loss for this month was \$0

Please let me know if you have any questions about the data contained in this report.

Sincerely,

Fred A. Schulenburg
Director of Business Services

c: Joe Parker, Deputy Chief

FAS:lg

Organized as the Santa Clara County Central Fire Protection District

*Serving Santa Clara County and the communities of Campbell, Cupertino, Los Altos,
Los Altos Hills, Los Gatos, Monte Sereno, and Saratoga*

Los Altos Hills County Fire District

Response Time Analysis

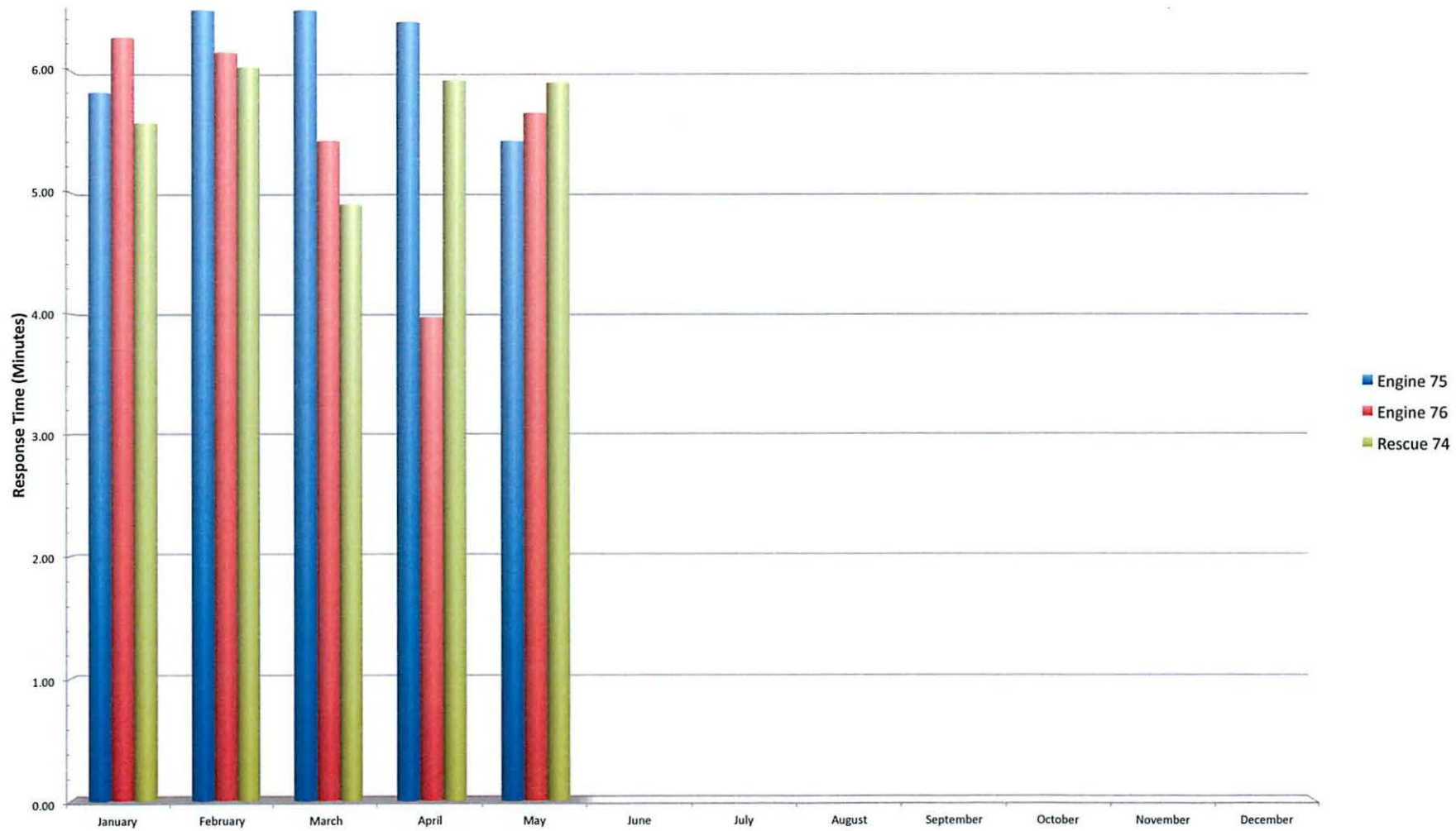
2014, 2013 & 2012

Los Altos Hills County Fire District 2014												
	January	February	March	April	May	June	July	August	September	October	November	December
Rescue 74	5.57	6.03	4.90	5.92	5.90							
Engine 75	5.82	6.98	7.67	6.40	5.42							
Engine 76	6.27	6.15	5.42	3.97	5.65							

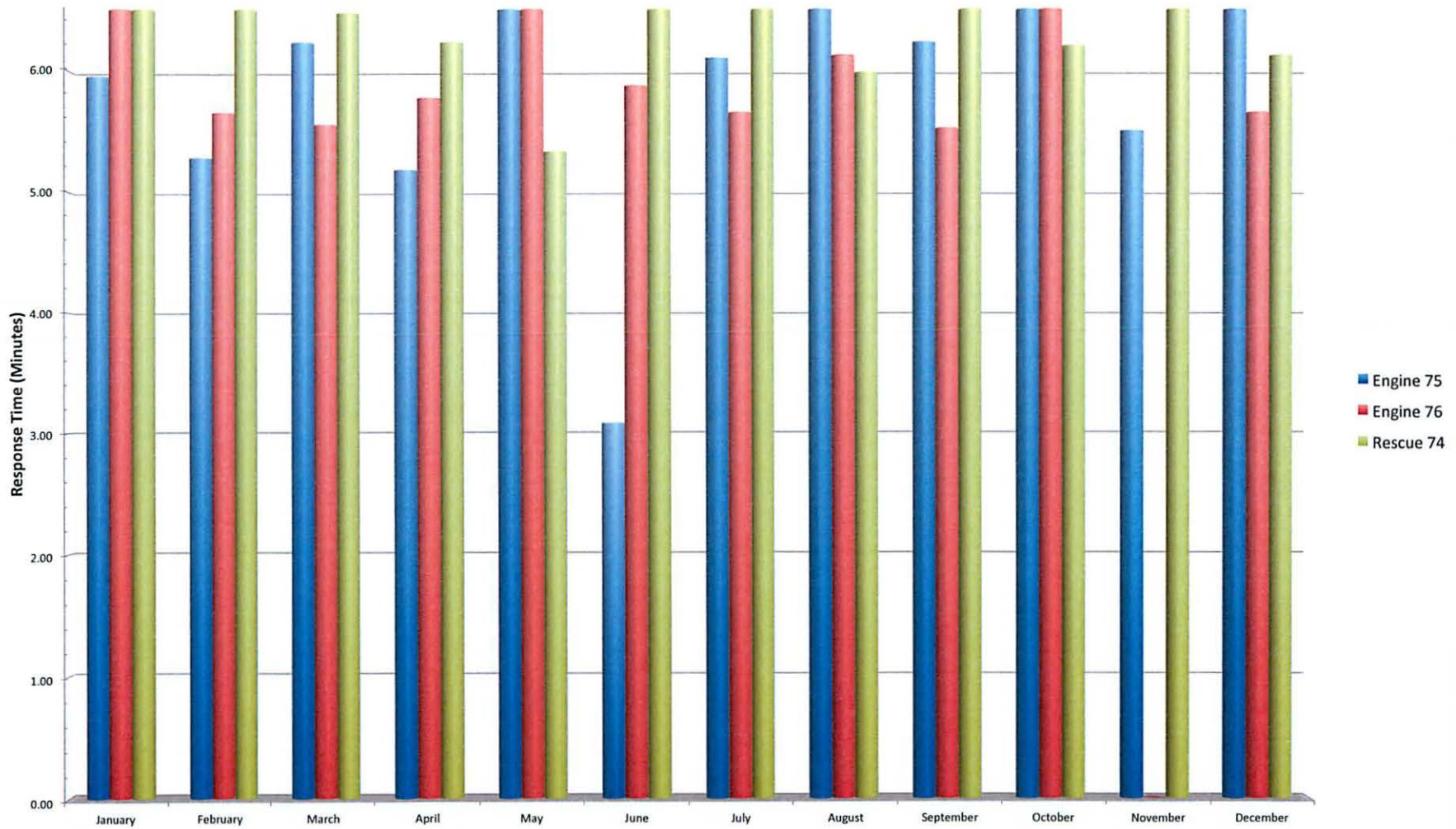
Los Altos Hills County Fire District 2013												
	January	February	March	April	May	June	July	August	September	October	November	December
Rescue 74	8.63	7.48	6.47	6.23	5.33	6.70	7.08	5.98	6.63	6.20	6.70	6.12
Engine 75	5.95	5.28	6.23	5.18	6.63	3.08	6.10	7.35	6.23	8.35	5.50	7.82
Engine 76	6.52	5.65	5.55	5.77	7.98	5.87	5.65	6.12	5.52	8.10	0.00	5.65

Los Altos Hills County Fire District 2012												
	January	February	March	April	May	June	July	August	September	October	November	December
Rescue 74	5.32	4.53	6.73	6.32	5.63	6.90	5.80	5.83	6.13	5.95	5.43	7.33
Engine 75	6.38	5.18	6.25	7.02	6.12	6.73	5.32	6.03	7.12	6.83	6.75	5.65
Engine 76	4.87	7.00	5.00	6.50	5.47	0.00	5.67	5.78	5.30	5.73	5.65	4.58

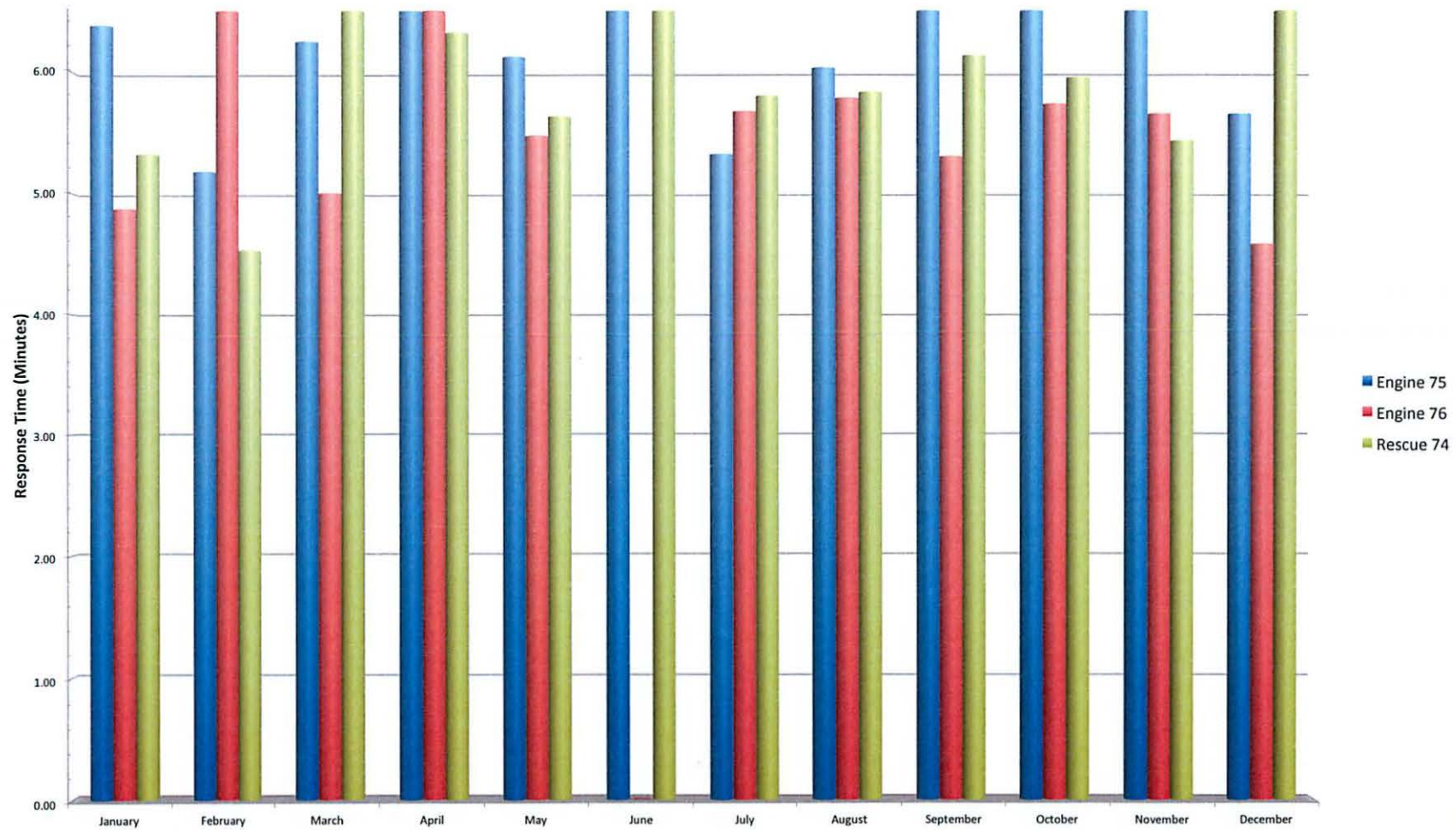
Los Altos Hills County Fire District
Average Response Times for Code 3 Calls
2014



Los Altos Hills County Fire District
Average Response Times for Code 3 Calls
2013



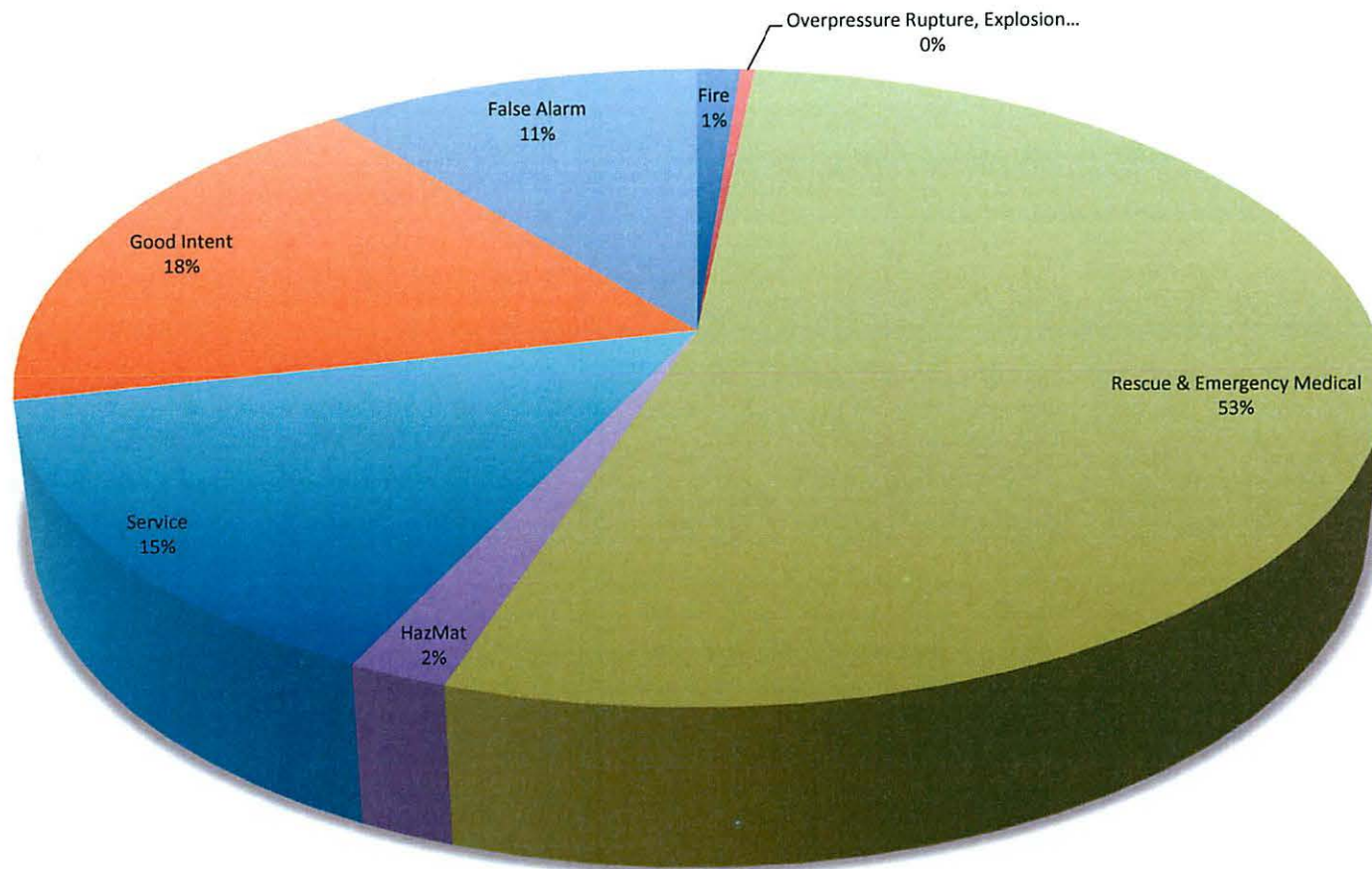
Los Altos Hills County Fire District
Average Response Times for Code 3 Calls
2012



Los Altos Hills County Fire District
Incident Types by Month
2014, 2013 & 2012

Fire	Year	January	February	March	April	May	June	July	August	September	October	November	December	Total
	2014	1	2	-	-	-								3
	2013	2	-	1	1	3	2	1	1	-	2	-	3	16
	2012	2	-	-	2	3	-	2	1	3	2	-	1	16
Overpressure Rupture, Explosion, Overheat (No Fire)	Year	January	February	March	April	May	June	July	August	September	October	November	December	Total
	2014	1	-	-	-	-								1
	2013	-	-	1	-	2	-	1	-	-	-	-	-	4
	2012	-	-	-	-	-	-	-	-	-	-	1	-	1
Rescue & Emergency Medical Service	Year	January	February	March	April	May	June	July	August	September	October	November	December	Total
	2014	25	25	25	24	33								132
	2013	11	23	17	31	24	34	30	14	19	29	23	27	282
	2012	32	21	25	36	22	32	35	25	18	35	23	16	320
Hazardous Condition (No Fire)	Year	January	February	March	April	May	June	July	August	September	October	November	December	Total
	2014	-	1	-	3	1								5
	2013	-	-	-	-	2	3	1	-	-	2	-	2	10
	2012	-	-	2	3	2	2	2	1	1	-	3	1	17
Service Call	Year	January	February	March	April	May	June	July	August	September	October	November	December	Total
	2014	12	7	5	7	5								36
	2013	4	6	6	5	10	6	5	5	11	3	1	10	72
	2012	7	3	5	5	8	3	4	5	7	4	2	4	57
Good Intent Call	Year	January	February	March	April	May	June	July	August	September	October	November	December	Total
	2014	8	9	7	8	12								44
	2013	7	12	9	13	14	10	12	12	12	8	5	11	125
	2012	6	8	10	10	9	16	8	6	7	13	14	12	119
False Alarm & False Call	Year	January	February	March	April	May	June	July	August	September	October	November	December	Total
	2014	7	5	8	3	3								26
	2013	4	3	1	12	4	3	5	7	12	6	9	9	75
	2012	6	7	5	3	2	5	8	3	8	5	7	7	66
Special Incident	Year	January	February	March	April	May	June	July	August	September	October	November	December	Total
	2014	-	-	-	-	1								1
	2013	-	-	-	-	-	-	-	-	-	-	-	-	0
	2012	-	-	-	-	-	-	-	-	-	-	-	1	1
Total Incidents	Year	January	February	March	April	May	June	July	August	September	October	November	December	Total
	2014	54	49	45	45	55	-	-	-	-	-	-	-	248
	2013	28	44	35	62	59	58	55	39	54	50	38	62	584
	2012	53	39	47	59	46	58	59	41	44	59	50	42	597

**Los Altos Hills County Fire District
Service Calls by Type
2014**



Los Altos Hills County Fire District
Monetary Loss by Month and Incident Type
2014, 2013 & 2012

Building Fire	Year	January	February	March	April	May	June	July	August	September	October	November	December	Total
	2014	-	2,000	-	-	-	-	-	-	-	-	-	-	2,000
	2013	400,000	-	950,000	-	500	-	-	-	-	500	-	3,592,500	4,943,500
	2012	-	-	-	-	5,000	-	-	-	-	-	-	-	5,000
Vehicle Fire	Year	January	February	March	April	May	June	July	August	September	October	November	December	Total
	2014	-	5,000	-	-	-	-	-	-	-	-	-	-	5,000
	2013	8,000	-	-	-	-	-	-	200	-	-	-	-	8,200
	2012	10,500	-	-	10,000	-	-	1,000	-	-	1,000	-	-	22,500
Natural Vegetation Fire	Year	January	February	March	April	May	June	July	August	September	October	November	December	Total
	2014	-	-	-	-	-	-	-	-	-	-	-	-	-
	2013	-	-	-	-	-	-	-	-	-	100	-	50	150
	2012	-	-	-	-	-	-	-	-	-	-	-	-	-
Outside Rubbish/Dumpster...	Year	January	February	March	April	May	June	July	August	September	October	November	December	Total
	2014	-	-	-	-	-	-	-	-	-	-	-	-	-
	2013	-	-	-	4,500	-	30	-	-	-	-	-	-	4,530
	2012	-	-	-	-	-	-	-	-	-	-	-	1,500	1,500
Special Outside Fire	Year	January	February	March	April	May	June	July	August	September	October	November	December	Total
	2014	-	-	-	-	-	-	-	-	-	-	-	-	-
	2013	-	-	-	-	-	-	-	-	-	-	-	-	-
	2012	-	-	-	-	33,000	-	2,001	-	-	1,000	-	-	36,001
Total Fire Loss	Year	January	February	March	April	May	June	July	August	September	October	November	December	Total
	2014	-	7,000	-	-	-	-	-	-	-	-	-	-	7,000
	2013	408,000	-	950,000	4,500	500	30	-	200	-	600	-	3,592,550	4,956,380
	2012	10,500	-	-	10,000	38,000	-	3,001	-	-	2,000	-	1,500	65,001

SANTA CLARA COUNTY FIRE DEPARTMENT
MONTHLY / CALENDAR YEAR REPORT for May 2014

Classification of Alarm	This Month City	This Month District	This Year City	This Year District	Last YTD City	Last YTD District
A. Number of Fires:						
Structures	0	0	1	1	6	3
Refuse/Debris	0	0	0	0	0	0
Misc. Outdoor	2	0	4	1	4	1
Vegetation	1	0	1	0	1	2
Vehicle	0	0	4	1	0	1
A. Total Fires	3	0	10	3	11	7
B. Number of Non-Fires:						
Accidental/Vicinity Alarm	38	16	173	65	176	75
Intentional False	0	0	1	2	0	0
Smoke/Gas Investigation	3	1	22	10	28	8
Hazardous Materials	2	0	9	3	14	2
Medical Emergency	101	27	516	113	577	93
Rescue	5	6	36	19	19	13
Public Service	11	5	81	33	76	30
B. Total Other Calls	160	55	838	245	890	221
Total A + B	163	55	848	248	901	228
C. Number of All Other Calls	(see note below)					
Auto Aid-In						
Auto Aid to PA, MV, SUN						
Mutual Aid-In	data not avail.		data not avail.			
Mutual Aid to PA, MV, SUN	data not avail.		data not avail.		data not avail.	
C. Total Other Calls	data not avail.		data not avail.		data not avail.	
D. TOTAL CALLS	163	55	848	248	901	228
E. Number of Injuries/Fatalities						
Fire Injuries-Citizens	0		0		1	
Fire Injuries-FF	0		0		0	
Fire Fatalities-Citizens	0		0		0	
Fire Fatalities-FF	0		0		0	
F. Estimated Dollar Fire Loss						
Structure	\$500	\$0	\$1,100	\$2,000	\$4,065	\$1,250,500
Vehicles	\$200	\$0	\$8,800	\$5,000	\$0	\$8,000
All Other	\$0	\$0	\$14,501	\$0	\$8,100	\$4,500
F. Total Dollar Loss	\$700	\$0	\$24,401	\$7,000	\$12,165	\$1,263,000

Note: LOS and LAH figures for Auto/Mutual Aid and injury data are combined.
Vicinity alarms include UTL.
Vehicle accidents are shown as rescues unless they are reported as medical calls.

lg
Rev. 6/4/14
9:23 AM

Fire Department

Monthly Incident Type Report (Summary)

Los Altos Hills

Alarm Date Between {5/1/2014} And {5/31/2014} and District =
"LAH "

Incident Type	Property Use	Count	Total Est Loss
3 Rescue & Emergency Medical Service Incident			
311 Medical assist, assist EMS crew		1	\$0
320 Emergency medical service, other		1	\$0
321 EMS call, excluding vehicle accident with injury		25	\$0
322 Motor vehicle accident with injuries		3	\$0
324 Motor Vehicle Accident with no injuries		3	\$0
		33	\$0
4 Hazardous Condition (No Fire)			
443 Breakdown of light ballast		1	\$0
		1	\$0
5 Service Call			
500 Service Call, other		2	\$0
510 Person in distress, Other		1	\$0
554 Assist invalid		2	\$0
		5	\$0
6 Good Intent Call			
600 Good intent call, Other		3	\$0
611 Dispatched & cancelled en route		6	\$0
6112 Dispatched & cancelled prior to going en route		2	\$0
622 No Incident found on arrival at dispatch address		1	\$0
		12	\$0
7 False Alarm & False Call			
700 False alarm or false call, Other		1	\$0
740 Unintentional transmission of alarm, Other		1	\$0
745 Alarm system activation, no fire - unintentional		1	\$0
		3	\$0
9 Special Incident Type			
9002 Monthly Strike Team Activation Drill		1	\$0
		1	\$0

Total Incident Count: 55

Total Est Loss: \$0

Response Time Centiles

All Districts with Averages

May 2014

Los Altos Hills

First Unit Arriving in Less Than:	1 min.	2 min.	3 min.	4 min.	5 min.	6 min.	7 min.	8 min.	9 min.	10 min.
E374 (2 responses)	0.0%	0.0%	0.0%	50.0%	50.0%	50.0%	50.0%	100.0%	100.0%	100.0%
Average Response Time: 5:16										
E73 (1 response)	0.0%	0.0%	0.0%	0.0%	100.0%	100.0%	100.0%	100.0%	100.0%	100.0%
Average Response Time: 4:44										
E75 (6 responses)	16.7%	16.7%	16.7%	16.7%	16.7%	66.7%	83.3%	83.3%	100.0%	100.0%
Average Response Time: 5:25										
E76 (8 responses)	0.0%	0.0%	0.0%	0.0%	25.0%	75.0%	100.0%	100.0%	100.0%	100.0%
Average Response Time: 5:39										
E77 (2 responses)	0.0%	0.0%	0.0%	0.0%	0.0%	0.0%	0.0%	100.0%	100.0%	100.0%
Average Response Time: 7:49										
R74 (17 responses)	0.0%	5.9%	23.5%	35.3%	47.1%	52.9%	58.8%	70.6%	82.4%	88.2%
Average Response Time: 5:54										
Los Altos Hills (36 responses)	2.8%	5.6%	13.9%	22.2%	36.1%	58.3%	69.4%	83.3%	91.7%	94.4%
Average Response Time: 5:48										