



FIRE DEPARTMENT SANTA CLARA COUNTY



14700 Winchester Blvd., Los Gatos, CA 95032-1818
(408) 378-4010 • (408) 378-9342 (fax) • www.sccfd.org

August 6, 2014

Los Altos Hills County Fire District Commissioners
12355 El Monte Road
Los Altos Hills, CA 94022

Subject: Fire Report for July 2014

To Whom It May Concern:

The July 2014 fire reports for the Los Altos Hills County Fire District are enclosed:

1. Average Response Time Analysis: This report provides data for the last three fiscal years on the average time it took for each first-in unit to arrive on scene. The computation starts from the moment the dispatcher makes his/her first keystroke at the command panel (after the call has been handed-off by the Emergency 911 telephone handler). This information is also graphically represented in the accompanying bar charts.

The average response times for Code 3 calls were as follows:

Engine 75: 6.50
Engine 76: 5.20
Rescue 74: 6.75

2. Incident Types by Month: This report summarizes on a monthly basis, the number of incidents by call type, for every emergency vehicle that was the first unit on-scene. This information is also graphically represented in a pie chart depicting the number of incidents by type.
3. Monetary Fire Loss by Month and Incident Type: This report presents the monthly dollar loss in each of the fire type categories for the last three fiscal years.

The fire loss for this month was \$0.

Please let me know if you have any questions about the data contained in this report.

Sincerely,


Fred A. Schulenburg
Director of Business Services

Enclosures

c: Joe Parker, Deputy Chief

FAS:mae

Organized as the Santa Clara County Central Fire Protection District

*Serving Santa Clara County and the communities of Campbell, Cupertino, Los Altos,
Los Altos Hills, Los Gatos, Monte Sereno, and Saratoga*

Los Altos Hills County Fire District

Response Time Analysis

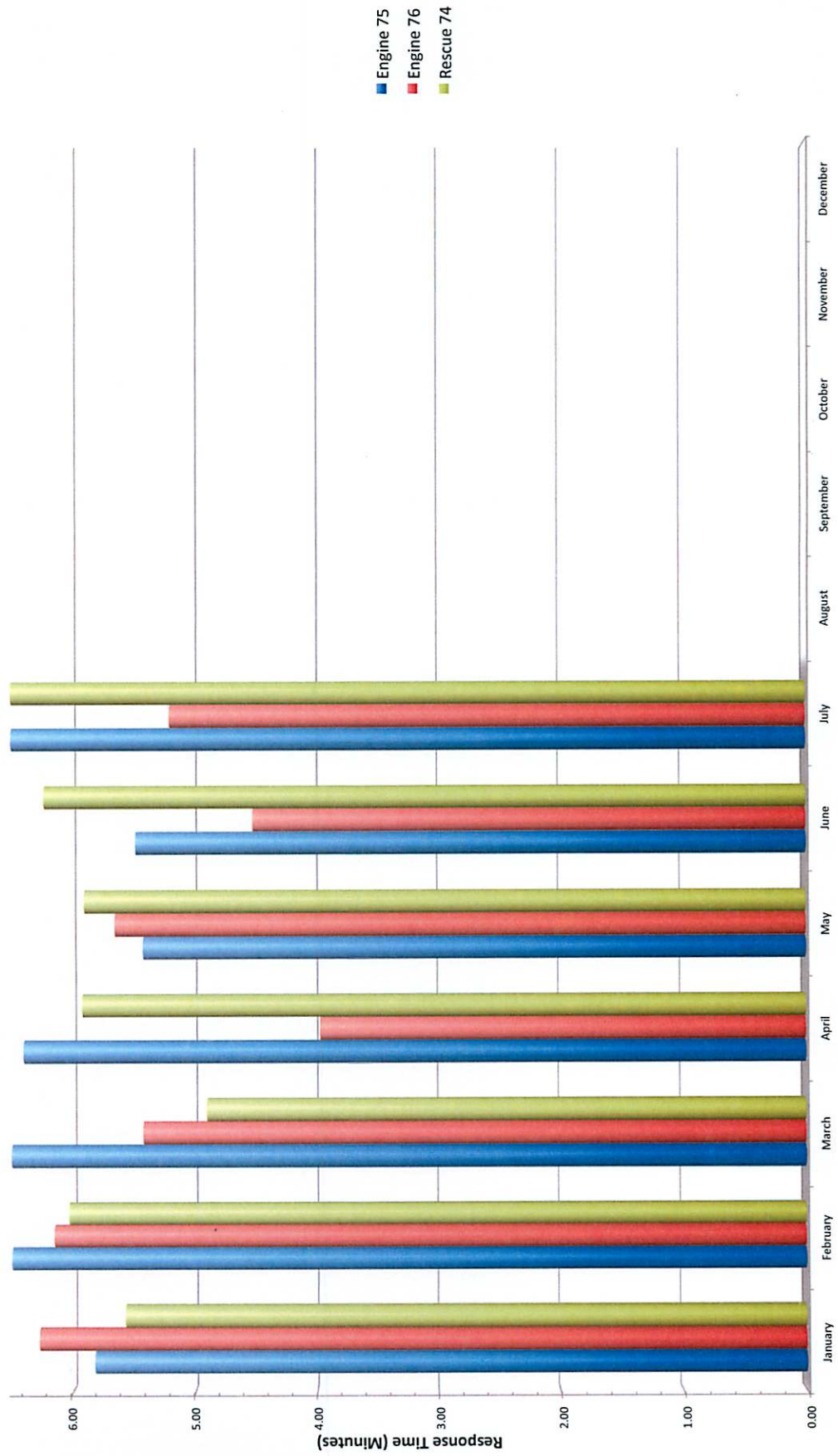
2014, 2013 & 2012

Los Altos Hills County Fire District 2014												
	January	February	March	April	May	June	July	August	September	October	November	December
Rescue 74	5.57	6.03	4.90	5.92	5.90	6.23	6.75					
Engine 75	5.82	6.98	7.67	6.40	5.42	5.48	6.50					
Engine 76	6.27	6.15	5.42	3.97	5.65	4.52	5.20					

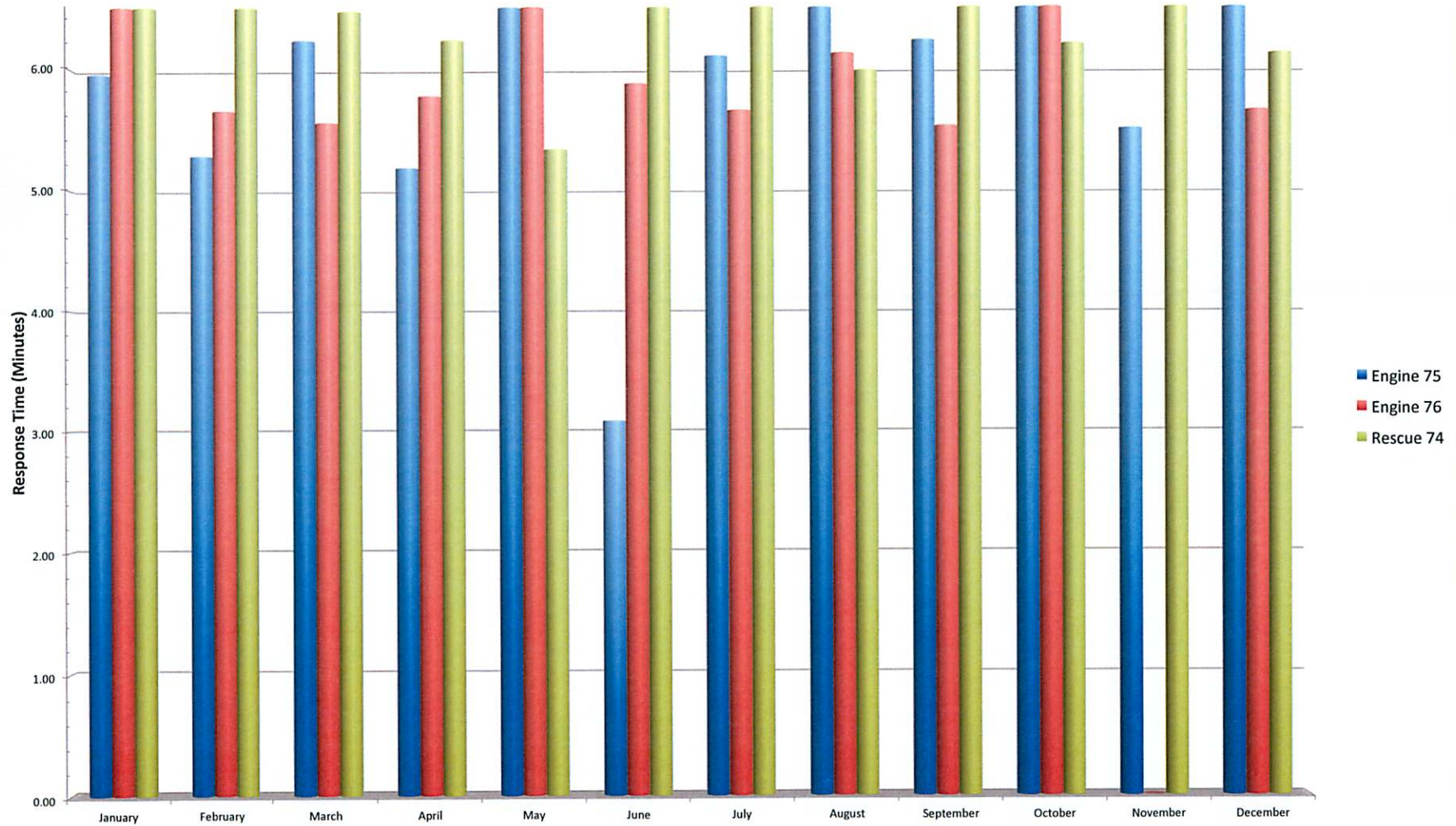
Los Altos Hills County Fire District 2013												
	January	February	March	April	May	June	July	August	September	October	November	December
Rescue 74	8.63	7.48	6.47	6.23	5.33	6.70	7.08	5.98	6.63	6.20	6.70	6.12
Engine 75	5.95	5.28	6.23	5.18	6.63	3.08	6.10	7.35	6.23	8.35	5.50	7.82
Engine 76	6.52	5.65	5.55	5.77	7.98	5.87	5.65	6.12	5.52	8.10	0.00	5.65

Los Altos Hills County Fire District 2012												
	January	February	March	April	May	June	July	August	September	October	November	December
Rescue 74	5.32	4.53	6.73	6.32	5.63	6.90	5.80	5.83	6.13	5.95	5.43	7.33
Engine 75	6.38	5.18	6.25	7.02	6.12	6.73	5.32	6.03	7.12	6.83	6.75	5.65
Engine 76	4.87	7.00	5.00	6.50	5.47	0.00	5.67	5.78	5.30	5.73	5.65	4.58

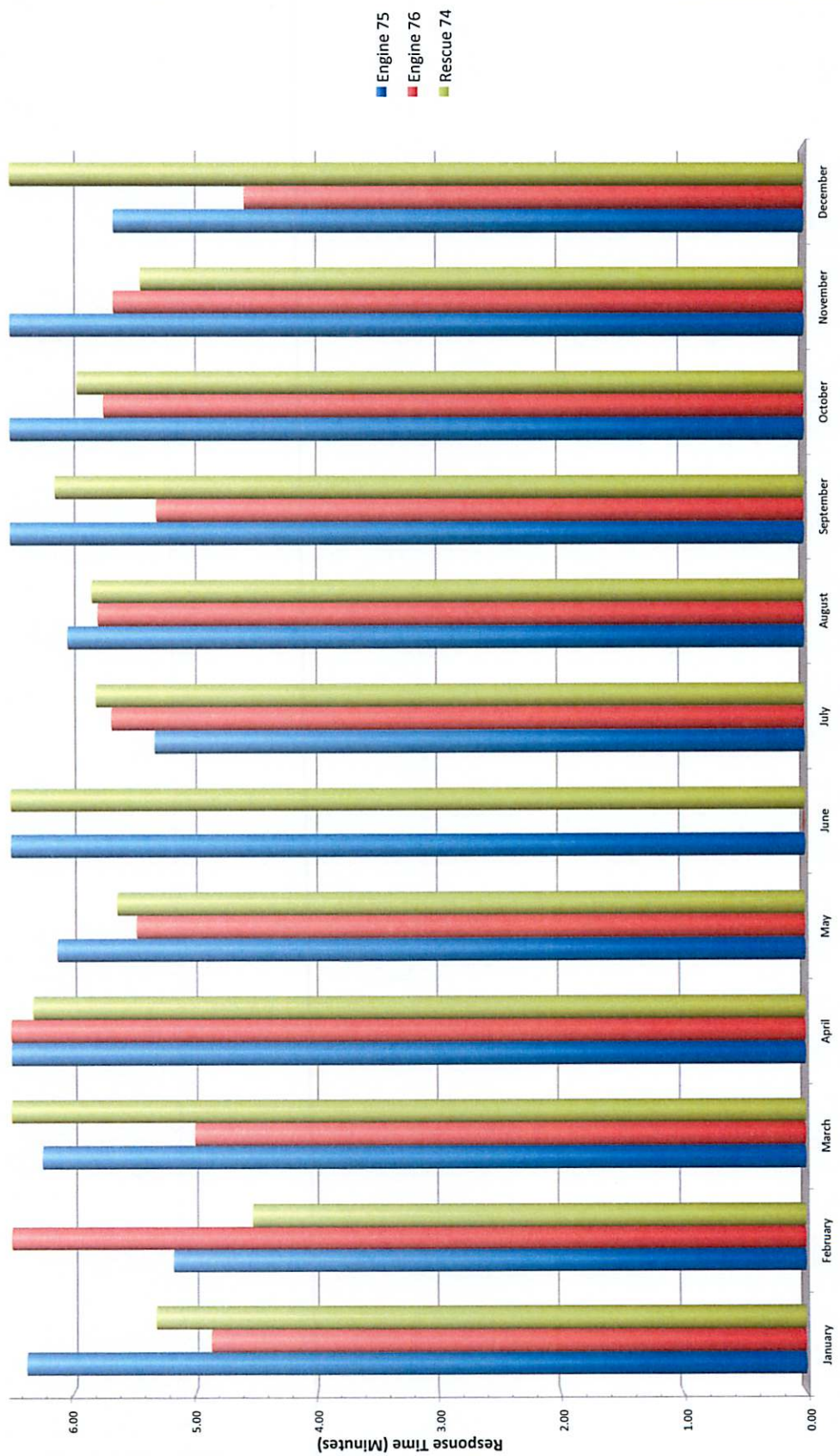
Los Altos Hills County Fire District Average Response Times for Code 3 Calls 2014



Los Altos Hills County Fire District
Average Response Times for Code 3 Calls
2013



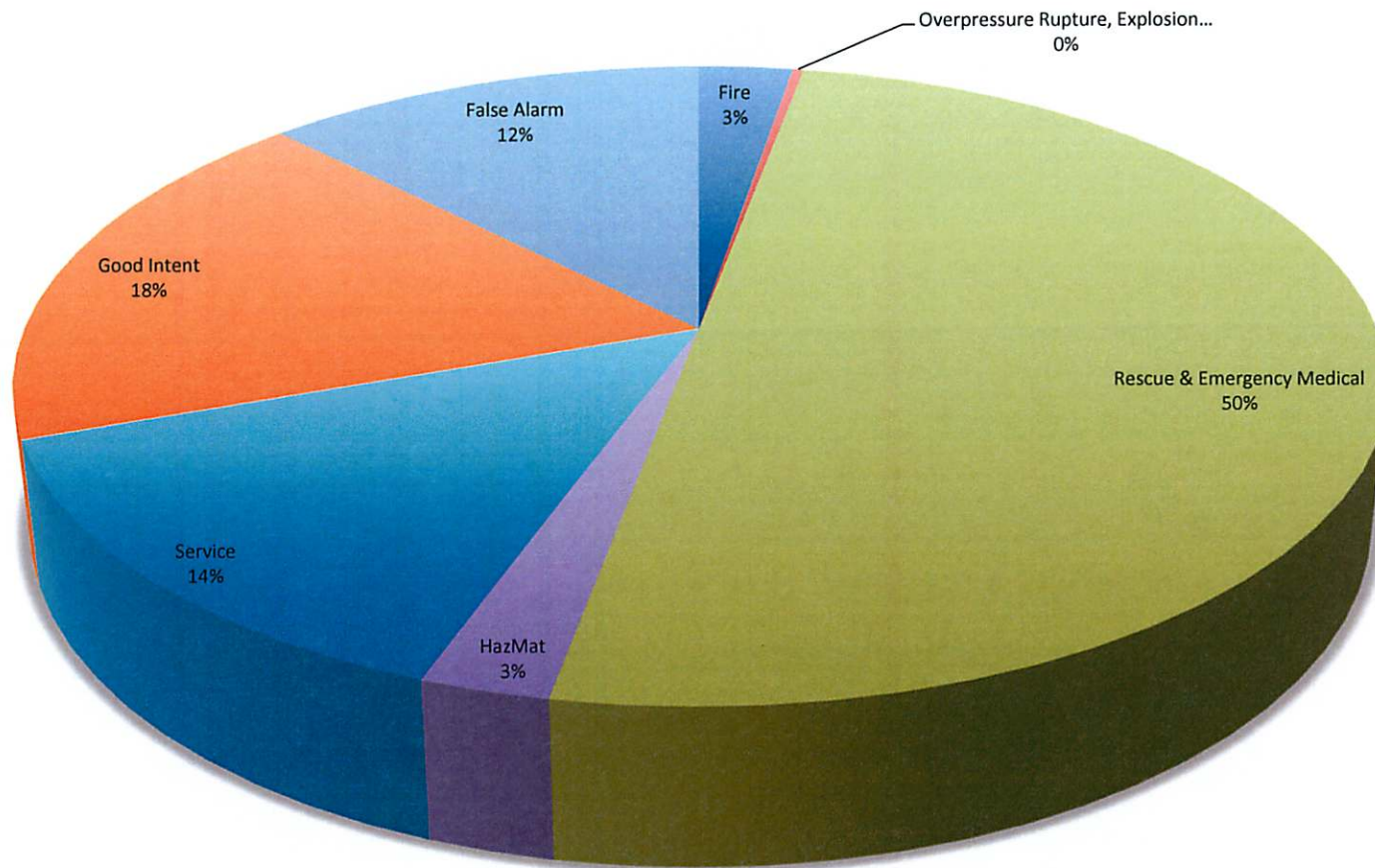
Los Altos Hills County Fire District Average Response Times for Code 3 Calls 2012



Los Altos Hills County Fire District
Incident Types by Month
2014, 2013 & 2012

Fire	Year	January	February	March	April	May	June	July	August	September	October	November	December	Total
	2014	1	2	-	-	-	3	3						9
	2013	2	-	1	1	3	2	1	1	-	2	-	3	16
	2012	2	-	-	2	3	-	2	1	3	2	-	1	16
Overpressure Rupture, Explosion, Overheat (No Fire)	Year	January	February	March	April	May	June	July	August	September	October	November	December	Total
	2014	1	-	-	-	-	-	-						1
	2013	-	-	1	-	2	-	1	-	-	-	-	-	4
	2012	-	-	-	-	-	-	-	-	-	-	1	-	1
Rescue & Emergency Medical Service	Year	January	February	March	April	May	June	July	August	September	October	November	December	Total
	2014	25	25	25	24	33	21	18						171
	2013	11	23	17	31	24	34	30	14	19	29	23	27	282
	2012	32	21	25	36	22	32	35	25	18	35	23	16	320
Hazardous Condition (No Fire)	Year	January	February	March	April	May	June	July	August	September	October	November	December	Total
	2014	-	1	-	3	1	2	2						9
	2013	-	-	-	-	2	3	1	-	-	2	-	2	10
	2012	-	-	2	3	2	2	2	1	1	-	3	1	17
Service Call	Year	January	February	March	April	May	June	July	August	September	October	November	December	Total
	2014	12	7	5	7	5	5	7						48
	2013	4	6	6	5	10	6	5	5	11	3	1	10	72
	2012	7	3	5	5	8	3	4	5	7	4	2	4	57
Good Intent Call	Year	January	February	March	April	May	June	July	August	September	October	November	December	Total
	2014	8	9	7	8	12	6	12						62
	2013	7	12	9	13	14	10	12	12	12	8	5	11	125
	2012	6	8	10	10	9	16	8	6	7	13	14	12	119
False Alarm & False Call	Year	January	February	March	April	May	June	July	August	September	October	November	December	Total
	2014	7	5	8	3	3	7	9						42
	2013	4	3	1	12	4	3	5	7	12	6	9	9	75
	2012	6	7	5	3	2	5	8	3	8	5	7	7	66
Special Incident	Year	January	February	March	April	May	June	July	August	September	October	November	December	Total
	2014	-	-	-	-	1	-	-						1
	2013	-	-	-	-	-	-	-	-	-	-	-	-	0
	2012	-	-	-	-	-	-	-	-	-	-	-	1	1
Total Incidents	Year	January	February	March	April	May	June	July	August	September	October	November	December	Total
	2014	54	49	45	45	55	44	51	-	-	-	-	-	343
	2013	28	44	35	62	59	58	55	39	54	50	38	62	584
	2012	53	39	47	59	46	58	59	41	44	59	50	42	597

**Los Altos Hills County Fire District
Service Calls by Type
2014**



Los Altos Hills County Fire District
Monetary Loss by Month and Incident Type
2014, 2013 & 2012

Building Fire	Year	January	February	March	April	May	June	July	August	September	October	November	December	Total
	2014	-	2,000	-	-	-	-	-	-	-	-	-	-	2,000
	2013	400,000	-	950,000	-	500	-	-	-	-	500	-	3,592,500	4,943,500
	2012	-	-	-	-	5,000	-	-	-	-	-	-	-	5,000
Vehicle Fire	Year	January	February	March	April	May	June	July	August	September	October	November	December	Total
	2014	-	5,000	-	-	-	-	-	-	-	-	-	-	5,000
	2013	8,000	-	-	-	-	-	-	200	-	-	-	-	8,200
	2012	10,500	-	-	10,000	-	-	1,000	-	-	1,000	-	-	22,500
Natural Vegetation Fire	Year	January	February	March	April	May	June	July	August	September	October	November	December	Total
	2014	-	-	-	-	-	-	-	-	-	-	-	-	-
	2013	-	-	-	-	-	-	-	-	-	100	-	50	150
	2012	-	-	-	-	-	-	-	-	-	-	-	-	-
Outside Rubbish/Dumpster...	Year	January	February	March	April	May	June	July	August	September	October	November	December	Total
	2014	-	-	-	-	-	-	-	-	-	-	-	-	-
	2013	-	-	-	4,500	-	30	-	-	-	-	-	-	4,530
	2012	-	-	-	-	-	-	-	-	-	-	-	1,500	1,500
Special Outside Fire	Year	January	February	March	April	May	June	July	August	September	October	November	December	Total
	2014	-	-	-	-	-	-	-	-	-	-	-	-	-
	2013	-	-	-	-	-	-	-	-	-	-	-	-	-
	2012	-	-	-	-	33,000	-	2,001	-	-	1,000	-	-	36,001
Total Fire Loss	Year	January	February	March	April	May	June	July	August	September	October	November	December	Total
	2014	-	7,000	-	-	-	-	-	-	-	-	-	-	7,000
	2013	408,000	-	950,000	4,500	500	30	-	200	-	600	-	3,592,550	4,956,380
	2012	10,500	-	-	10,000	38,000	-	3,001	-	-	2,000	-	1,500	65,001

SANTA CLARA COUNTY FIRE DEPARTMENT

MONTHLY / CALENDAR YEAR REPORT for July 2014

Classification of Alarm	This Month City	This Month District	This Year City	This Year District	Last YTD City	Last YTD District
A. Number of Fires:						
Structures	1	0	2	2	8	3
Refuse/Debris	3	0	3	1	3	1
Misc. Outdoor	0	0	4	1	5	1
Vegetation	0	3	1	4	3	4
Vehicle	0	0	4	1	0	1
A. Total Fires	4	3	14	9	19	10
B. Number of Non-Fires:						
Accidental/Vicinity Alarm	54	18	270	95	250	103
Intentional False	0	0	1	2	0	0
Smoke/Gas Investigation	9	5	41	18	38	14
Hazardous Materials	2	0	14	4	22	3
Medical Emergency	117	18	738	150	783	144
Rescue	5	0	47	21	22	26
Public Service	19	7	105	44	112	41
B. Total Other Calls	206	48	1,216	334	1,227	331
Total A + B	210	51	1,230	343	1,246	341
C. Number of All Other Calls	(see note below)					
Auto Aid-In						
Auto Aid to PA, MV, SUN						
Mutual Aid-In	data not avail.		data not avail.			
Mutual Aid to PA, MV, SUN	data not avail.		data not avail.		data not avail.	
C. Total Other Calls	data not avail.		data not avail.		data not avail.	
D. TOTAL CALLS	210	51	1230	343	1,246	341
E. Number of Injuries/Fatalities						
Fire Injuries-Citizens	0		0		1	
Fire Injuries-FF	0		0		0	
Fire Fatalities-Citizens	0		0		0	
Fire Fatalities-FF	0		0		0	
F. Estimated Dollar Fire Loss						
Structure	\$1,100	\$0	\$2,200	\$2,000	\$46,465	\$1,250,500
Vehicles	\$0	\$0	\$8,800	\$5,000	\$0	\$8,000
All Other	\$2,000	\$0	\$16,501	\$0	\$12,101	\$4,530
F. Total Dollar Loss	\$3,100	\$0	\$27,501	\$7,000	\$58,566	\$1,263,030

Note: LOS and LAH figures for Auto/Mutual Aid and injury data are combined.
 Vicinity alarms include UTL.
 Vehicle accidents are shown as rescues unless they are reported as medical calls.

lg
 8/6/14
 8:44 AM

Response Time Centiles

All Districts with Averages

July 2014

Los Altos Hills

First Unit Arriving in Less Than:		1 min.	2 min.	3 min.	4 min.	5 min.	6 min.	7 min.	8 min.	9 min.	10 min.
E374 (4 responses)		25.0%	25.0%	25.0%	25.0%	50.0%	50.0%	75.0%	75.0%	75.0%	75.0%
Average Response Time:	5:05										
E71 (1 response)		0.0%	0.0%	0.0%	0.0%	100.0%	100.0%	100.0%	100.0%	100.0%	100.0%
Average Response Time:	4:57										
E75 (4 responses)		0.0%	0.0%	0.0%	0.0%	0.0%	25.0%	75.0%	100.0%	100.0%	100.0%
Average Response Time:	6:30										
E76 (4 responses)		0.0%	0.0%	0.0%	25.0%	50.0%	50.0%	100.0%	100.0%	100.0%	100.0%
Average Response Time:	5:12										
E77 (1 response)		0.0%	0.0%	0.0%	0.0%	0.0%	100.0%	100.0%	100.0%	100.0%	100.0%
Average Response Time:	5:10										
R74 (13 responses)		0.0%	0.0%	0.0%	7.7%	15.4%	30.8%	53.8%	76.9%	100.0%	100.0%
Average Response Time:	6:45										
Los Altos Hills (27 responses)		3.7%	3.7%	3.7%	11.1%	25.9%	40.7%	70.4%	85.2%	96.3%	96.3%
Average Response Time:	6:07										

Fire Department

Monthly Incident Type Report (Summary)

Los Altos Hills

**Alarm Date Between {7/1/2014} And {7/31/2014} and District =
"LAH "**

Incident Type	Property Use	Count	Total Est Loss
1 Fire			
140 Natural vegetation fire, Other	900 Outside or special property, Other	1	\$0
140 Natural vegetation fire, Other	931 Open land or field	1	\$0
143 Grass fire	963 Street or road in commercial area	1	\$0
		3	\$0
3 Rescue & Emergency Medical Service Incident			
321 EMS call, excluding vehicle accident with injury		18	\$0
		18	\$0
4 Hazardous Condition (No Fire)			
440 Electrical wiring/equipment problem, Other		2	\$0
		2	\$0
5 Service Call			
520 Water problem, Other		1	\$0
522 Water or steam leak		3	\$0
554 Assist invalid		3	\$0
		7	\$0
6 Good Intent Call			
600 Good intent call, Other		1	\$0
611 Dispatched & cancelled en route		5	\$0
6112 Dispatched & cancelled prior to going en route		1	\$0
6113 Dispatched & cancelled upon arrival		2	\$0
650 Steam, Other gas mistaken for smoke, Other		1	\$0
651 Smoke scare, odor of smoke		2	\$0
		12	\$0
7 False Alarm & False Call			
733 Smoke detector activation due to malfunction		4	\$0
735 Alarm system sounded due to malfunction		2	\$0
741 Sprinkler activation, no fire - unintentional		1	\$0
745 Alarm system activation, no fire - unintentional		2	\$0
		9	\$0

Total Incident Count: 51

Total Est Loss: \$0

Fire Department

Monthly Cause of Ignition Report (Summary)

Los Altos Hills

Alarm Date Between {7/1/2014} And {7/31/2014} and District =
"LAH "

Cause of Ignition	Count	Total Est Loss
2 Unintentional None	1	\$0
U Cause undetermined after investigation Undetermined	2	\$0
Total Incident Count:	3	Total Est Loss: \$0



FIRE DEPARTMENT SANTA CLARA COUNTY



14700 Winchester Blvd., Los Gatos, CA 95032-1818
(408) 378-4010 • (408) 378-9342 (fax) • www.sccfd.org

September 4, 2014

Los Altos Hills County Fire District Commissioners
12355 El Monte Road
Los Altos Hills, CA 94022

Subject: Fire Report for August 2014

To Whom It May Concern:

The August 2014 fire reports for the Los Altos Hills County Fire District are enclosed:

1. Average Response Time Analysis: This report provides data for the last three fiscal years on the average time it took for each first-in unit to arrive on scene. The computation starts from the moment the dispatcher makes his/her first keystroke at the command panel (after the call has been handed-off by the Emergency 911 telephone handler). This information is also graphically represented in the accompanying bar charts.

The average response times for Code 3 calls were as follows:

Engine 75: 7.63
Engine 76: 5.50
Rescue 74: 6.28

2. Incident Types by Month: This report summarizes on a monthly basis, the number of incidents by call type, for every emergency vehicle that was the first unit on-scene. This information is also graphically represented in a pie chart depicting the number of incidents by type.
3. Monetary Fire Loss by Month and Incident Type: This report presents the monthly dollar loss in each of the fire type categories for the last three fiscal years.

The fire loss for this month was \$0.

Please let me know if you have any questions about the data contained in this report.

Sincerely,

Fred A. Schulenburg
Director of Business Services

Enclosures

c: Joe Parker, Deputy Chief

FAS:mae

Organized as the Santa Clara County Central Fire Protection District
Serving Santa Clara County and the communities of Campbell, Cupertino, Los Altos,
Los Altos Hills, Los Gatos, Monte Sereno, and Saratoga

Los Altos Hills County Fire District

Response Time Analysis

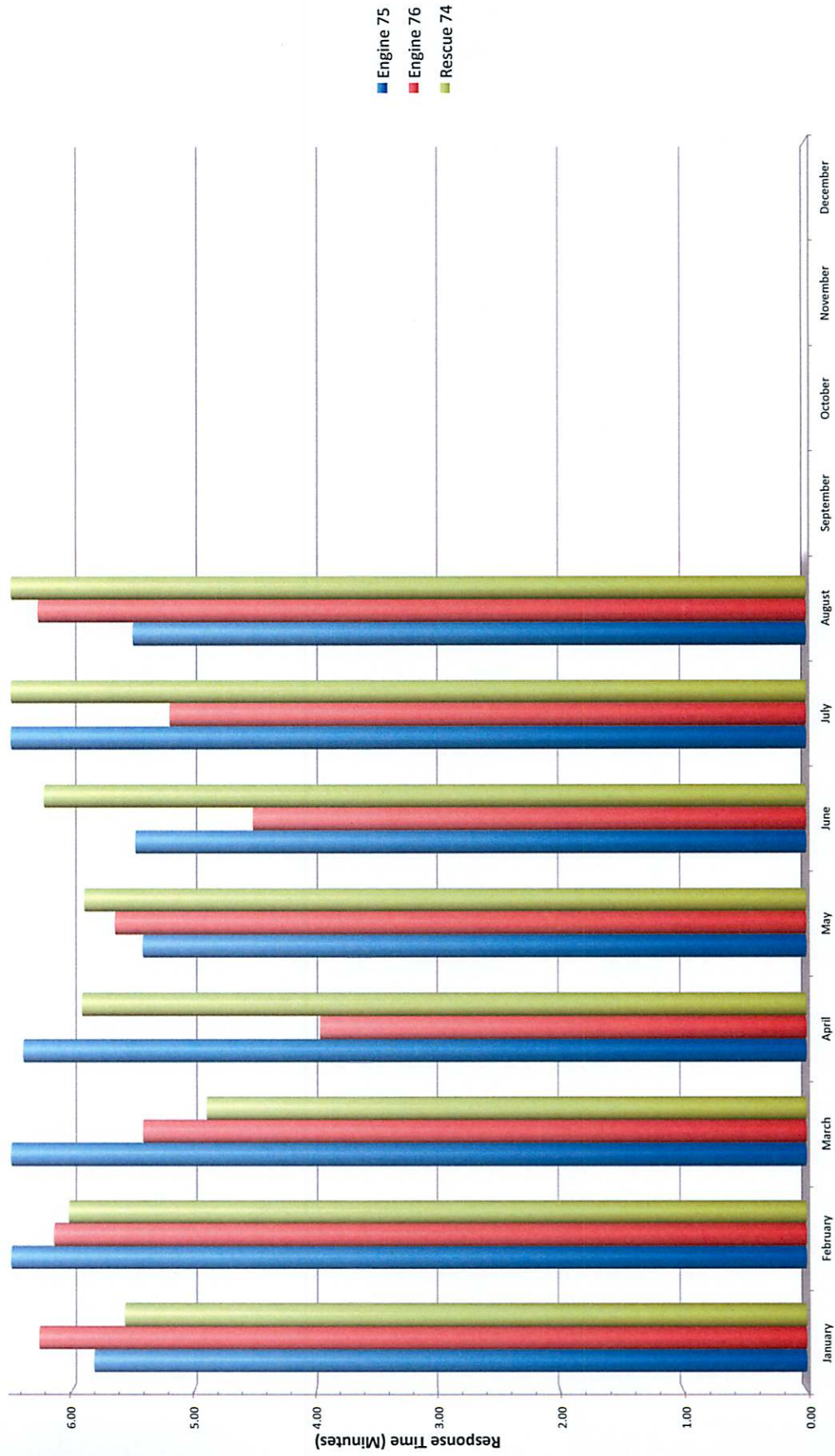
2014, 2013 & 2012

Los Altos Hills County Fire District 2014												
	January	February	March	April	May	June	July	August	September	October	November	December
Rescue 74	5.57	6.03	4.90	5.92	5.90	6.23	6.75	7.63				
Engine 75	5.82	6.98	7.67	6.40	5.42	5.48	6.50	5.50				
Engine 76	6.27	6.15	5.42	3.97	5.65	4.52	5.20	6.28				

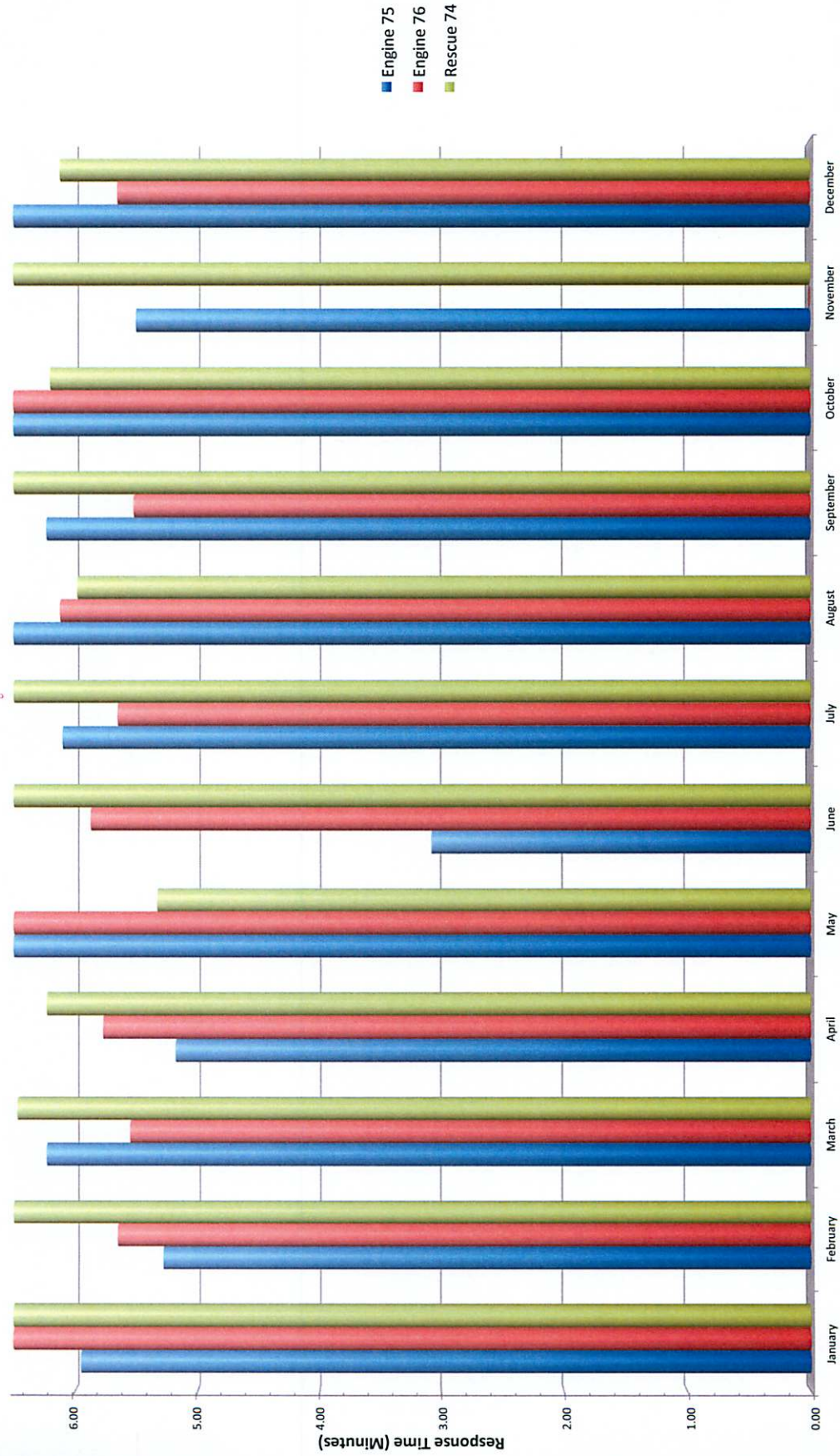
Los Altos Hills County Fire District 2013												
	January	February	March	April	May	June	July	August	September	October	November	December
Rescue 74	8.63	7.48	6.47	6.23	5.33	6.70	7.08	5.98	6.63	6.20	6.70	6.12
Engine 75	5.95	5.28	6.23	5.18	6.63	3.08	6.10	7.35	6.23	8.35	5.50	7.82
Engine 76	6.52	5.65	5.55	5.77	7.98	5.87	5.65	6.12	5.52	8.10	0.00	5.65

Los Altos Hills County Fire District 2012												
	January	February	March	April	May	June	July	August	September	October	November	December
Rescue 74	5.32	4.53	6.73	6.32	5.63	6.90	5.80	5.83	6.13	5.95	5.43	7.33
Engine 75	6.38	5.18	6.25	7.02	6.12	6.73	5.32	6.03	7.12	6.83	6.75	5.65
Engine 76	4.87	7.00	5.00	6.50	5.47	0.00	5.67	5.78	5.30	5.73	5.65	4.58

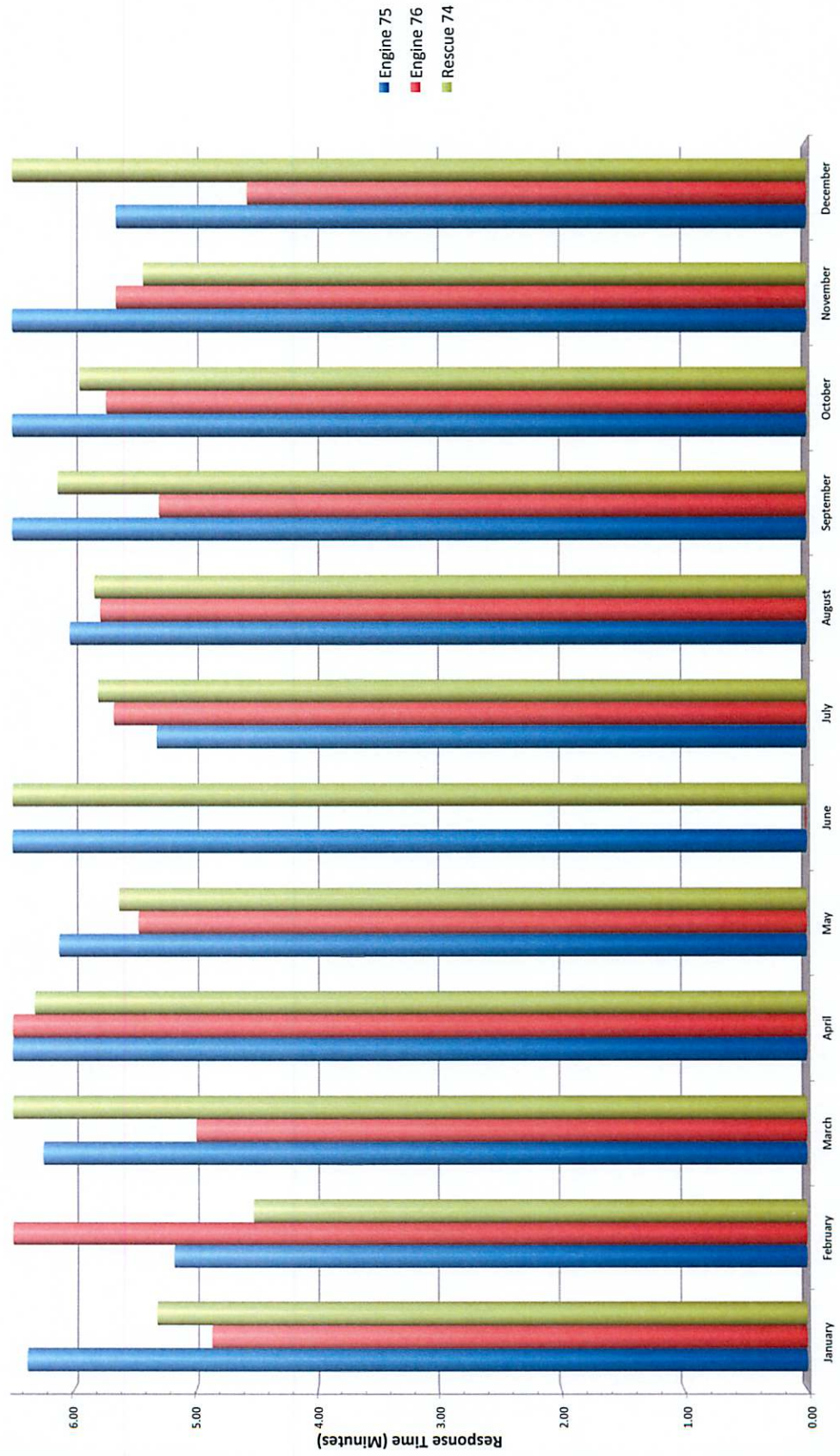
Los Altos Hills County Fire District Average Response Times for Code 3 Calls 2014



Los Altos Hills County Fire District Average Response Times for Code 3 Calls 2013



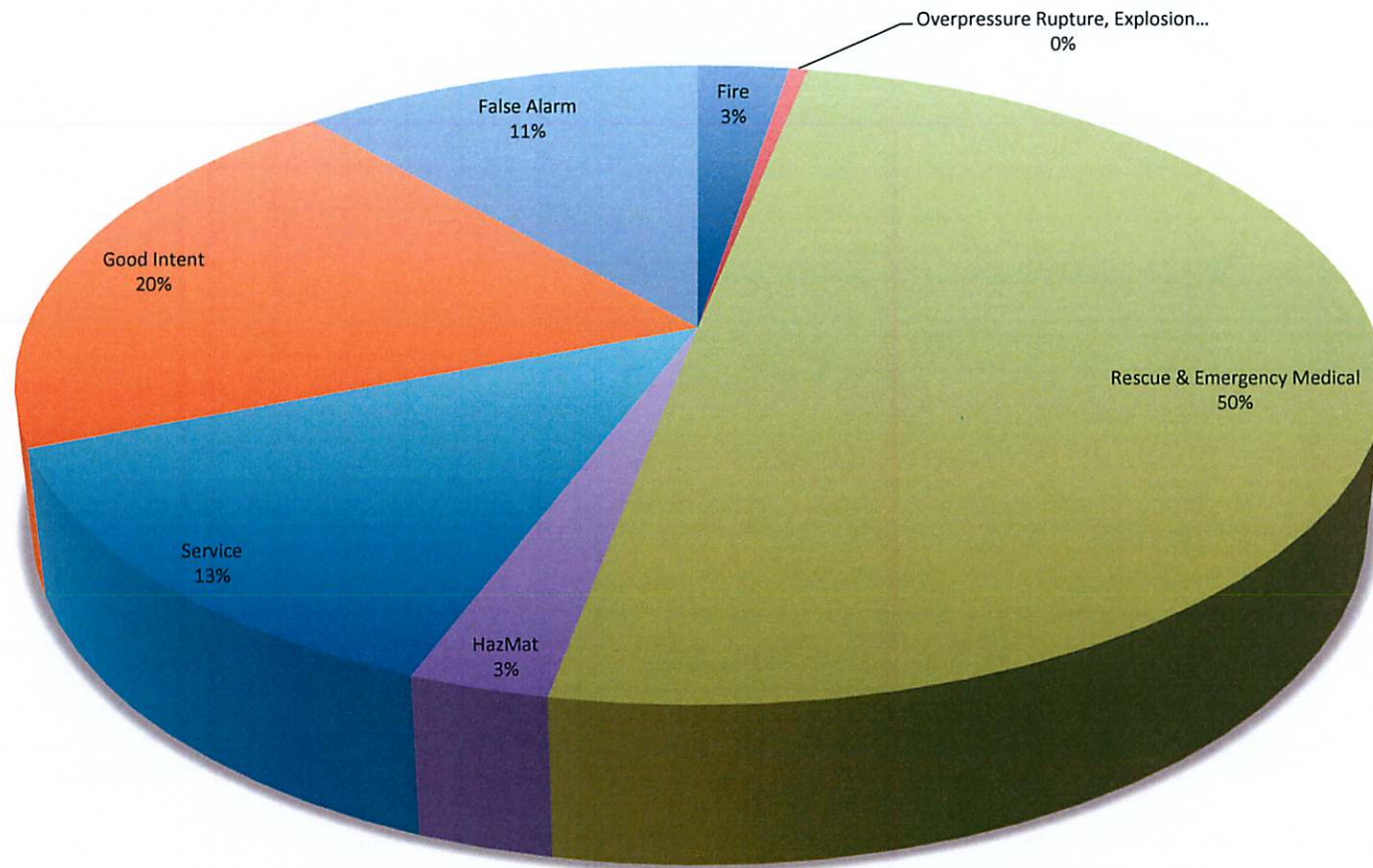
Los Altos Hills County Fire District
Average Response Times for Code 3 Calls
2012



Los Altos Hills County Fire District
Incident Types by Month
2014, 2013 & 2012

Fire	Year	January	February	March	April	May	June	July	August	September	October	November	December	Total
	2014	1	2	-	-	-	3	3	1					10
	2013	2	-	1	1	3	2	1	1	-	2	-	3	16
	2012	2	-	-	2	3	-	2	1	3	2	-	1	16
Overpressure Rupture, Explosion, Overheat (No Fire)	Year	January	February	March	April	May	June	July	August	September	October	November	December	Total
	2014	1	-	-	-	-	-	-	1					2
	2013	-	-	1	-	2	-	1	-	-	-	-	-	4
	2012	-	-	-	-	-	-	-	-	-	-	1	-	1
Rescue & Emergency Medical Service	Year	January	February	March	April	May	June	July	August	September	October	November	December	Total
	2014	25	25	25	24	33	21	18	24					195
	2013	11	23	17	31	24	34	30	14	19	29	23	27	282
	2012	32	21	25	36	22	32	35	25	18	35	23	16	320
Hazardous Condition (No Fire)	Year	January	February	March	April	May	June	July	August	September	October	November	December	Total
	2014	-	1	-	3	1	2	2	2					11
	2013	-	-	-	-	2	3	1	-	-	2	-	2	10
	2012	-	-	2	3	2	2	2	1	1	-	3	1	17
Service Call	Year	January	February	March	April	May	June	July	August	September	October	November	December	Total
	2014	12	7	5	7	5	5	7	4					52
	2013	4	6	6	5	10	6	5	5	11	3	1	10	72
	2012	7	3	5	5	8	3	4	5	7	4	2	4	57
Good Intent Call	Year	January	February	March	April	May	June	July	August	September	October	November	December	Total
	2014	8	9	7	8	12	6	12	15					77
	2013	7	12	9	13	14	10	12	12	12	8	5	11	125
	2012	6	8	10	10	9	16	8	6	7	13	14	12	119
False Alarm & False Call	Year	January	February	March	April	May	June	July	August	September	October	November	December	Total
	2014	7	5	8	3	3	7	9	2					44
	2013	4	3	1	12	4	3	5	7	12	6	9	9	75
	2012	6	7	5	3	2	5	8	3	8	5	7	7	66
Special Incident	Year	January	February	March	April	May	June	July	August	September	October	November	December	Total
	2014	-	-	-	-	1	-	-	-					1
	2013	-	-	-	-	-	-	-	-	-	-	-	-	0
	2012	-	-	-	-	-	-	-	-	-	-	-	1	1
Total Incidents	Year	January	February	March	April	May	June	July	August	September	October	November	December	Total
	2014	54	49	45	45	55	44	51	49	-	-	-	-	392
	2013	28	44	35	62	59	58	55	39	54	50	38	62	584
	2012	53	39	47	59	46	58	59	41	44	59	50	42	597

**Los Altos Hills County Fire District
Service Calls by Type
2014**



Los Altos Hills County Fire District
Monetary Loss by Month and Incident Type
2014, 2013 & 2012

Building Fire	Year	January	February	March	April	May	June	July	August	September	October	November	December	Total
	2014	-	2,000	-	-	-	-	-	-	-	-	-	-	2,000
	2013	400,000	-	950,000	-	500	-	-	-	-	500	-	3,592,500	4,943,500
	2012	-	-	-	-	5,000	-	-	-	-	-	-	-	5,000
Vehicle Fire	Year	January	February	March	April	May	June	July	August	September	October	November	December	Total
	2014	-	5,000	-	-	-	-	-	-	-	-	-	-	5,000
	2013	8,000	-	-	-	-	-	-	200	-	-	-	-	8,200
	2012	10,500	-	-	10,000	-	-	1,000	-	-	1,000	-	-	22,500
Natural Vegetation Fire	Year	January	February	March	April	May	June	July	August	September	October	November	December	Total
	2014	-	-	-	-	-	-	-	-	-	-	-	-	-
	2013	-	-	-	-	-	-	-	-	-	100	-	50	150
	2012	-	-	-	-	-	-	-	-	-	-	-	-	-
Outside Rubbish/Dumpster...	Year	January	February	March	April	May	June	July	August	September	October	November	December	Total
	2014	-	-	-	-	-	-	-	-	-	-	-	-	-
	2013	-	-	-	4,500	-	30	-	-	-	-	-	-	4,530
	2012	-	-	-	-	-	-	-	-	-	-	-	1,500	1,500
Special Outside Fire	Year	January	February	March	April	May	June	July	August	September	October	November	December	Total
	2014	-	-	-	-	-	-	-	-	-	-	-	-	-
	2013	-	-	-	-	-	-	-	-	-	-	-	-	-
	2012	-	-	-	-	33,000	-	2,001	-	-	1,000	-	-	36,001
Total Fire Loss	Year	January	February	March	April	May	June	July	August	September	October	November	December	Total
	2014	-	7,000	-	-	-	-	-	-	-	-	-	-	7,000
	2013	408,000	-	950,000	4,500	500	30	-	200	-	600	-	3,592,550	4,956,380
	2012	10,500	-	-	10,000	38,000	-	3,001	-	-	2,000	-	1,500	65,001

Response Time Centiles

All Districts with Averages

August 2014

Los Altos Hills

First Unit Arriving in Less Than:	1 min.	2 min.	3 min.	4 min.	5 min.	6 min.	7 min.	8 min.	9 min.	10 min.
E374 (4 responses)	0.0%	0.0%	25.0%	50.0%	50.0%	50.0%	50.0%	50.0%	100.0%	100.0%
Average Response Time: 5:45										
E72 (1 response)	0.0%	0.0%	0.0%	0.0%	0.0%	100.0%	100.0%	100.0%	100.0%	100.0%
Average Response Time: 5:34										
E75 (7 responses)	0.0%	0.0%	0.0%	0.0%	14.3%	28.6%	42.9%	71.4%	85.7%	85.7%
Average Response Time: 7:38										
E76 (7 responses)	0.0%	0.0%	0.0%	0.0%	42.9%	71.4%	85.7%	85.7%	100.0%	100.0%
Average Response Time: 5:30										
E77 (1 response)	0.0%	0.0%	0.0%	0.0%	0.0%	0.0%	0.0%	0.0%	100.0%	100.0%
Average Response Time: 8:59										
PAE365 (1 response)	0.0%	0.0%	0.0%	0.0%	0.0%	0.0%	0.0%	100.0%	100.0%	100.0%
Average Response Time: 7:03										
R74 (9 responses)	0.0%	0.0%	0.0%	33.3%	33.3%	55.6%	55.6%	66.7%	77.8%	88.9%
Average Response Time: 6:17										
Los Altos Hills (30 responses)	0.0%	0.0%	3.3%	16.7%	30.0%	50.0%	56.7%	70.0%	90.0%	93.3%
Average Response Time: 6:26										

Fire Department

Monthly Incident Type Report (Summary)

Los Altos Hills

Alarm Date Between {8/1/2014} And {8/31/2014} and District =
"LAH "

Incident Type	Property Use	Count	Total Est Loss
1 Fire			
100 Fire, Other	419 1 or 2 family dwelling	1	\$0
		<u>1</u>	<u>\$0</u>
2 Overpressure Rupture, Explosion, Overheat(no fire)			
251 Excessive heat, scorch burns with no ignition		1	\$0
		<u>1</u>	<u>\$0</u>
3 Rescue & Emergency Medical Service Incident			
320 Emergency medical service, other		1	\$0
321 EMS call, excluding vehicle accident with injury		23	\$0
		<u>24</u>	<u>\$0</u>
4 Hazardous Condition (No Fire)			
412 Gas leak (natural gas or LPG)		1	\$0
445 Arcing, shorted electrical equipment		1	\$0
		<u>2</u>	<u>\$0</u>
5 Service Call			
520 Water problem, Other		1	\$0
554 Assist invalid		3	\$0
		<u>4</u>	<u>\$0</u>
6 Good Intent Call			
600 Good intent call, Other		4	\$0
611 Dispatched & cancelled en route		6	\$0
6112 Dispatched & cancelled prior to going en route		1	\$0
6113 Dispatched & cancelled upon arrival		1	\$0
622 No Incident found on arrival at dispatch address		2	\$0
651 Smoke scare, odor of smoke		1	\$0
		<u>15</u>	<u>\$0</u>
7 False Alarm & False Call			
735 Alarm system sounded due to malfunction		1	\$0
745 Alarm system activation, no fire - unintentional		1	\$0
		<u>2</u>	<u>\$0</u>

Total Incident Count: 49

Total Est Loss: \$0

Fire Department

Monthly Cause of Ignition Report (Summary)

Los Altos Hills

Alarm Date Between {8/1/2014} And {8/31/2014} and District =
"LAH "

Cause of Ignition	Count	Total Est Loss
3 Failure of equipment or heat source None	1	\$0
Total Incident Count:	1	Total Est Loss: \$0