



FIRE DEPARTMENT SANTA CLARA COUNTY



14700 Winchester Blvd., Los Gatos, CA 95032-1818
(408) 378-4010 • (408) 378-9342 (fax) • www.sccfd.org

May 5, 2015

Los Altos Hills County Fire District Commissioners
12355 El Monte Road
Los Altos Hills, CA 94022

Subject: Fire Report for April 2015

To Whom It May Concern:

The April 2015 fire reports for the Los Altos Hills County Fire District are enclosed:

1. Average Response Time Analysis: This report provides data for the last three fiscal years on the average time it took for each first-in unit to arrive on scene. The computation starts from the moment the dispatcher makes his/her first keystroke at the command panel (after the call has been handed-off by the Emergency 911 telephone handler). This information is also graphically represented in the accompanying bar charts.

The average response times for Code 3 calls were as follows:

Rescue 74: 5.08
Engine 75: 6.57
Engine 76: 6.15

2. Incident Types by Month: This report summarizes on a monthly basis, the number of incidents by call type, for every emergency vehicle that was the first unit on-scene. This information is also graphically represented in a pie chart depicting the number of incidents by type.
3. Monetary Fire Loss by Month and Incident Type: This report presents the monthly dollar loss in each of the fire type categories for the last three fiscal years.

The fire loss for this month was \$4,050.

Please let me know if you have any questions about the data contained in this report.

Sincerely,

Fred A. Schulenburg
Director of Business Services

Enclosures

c: Joe Parker, Deputy Chief

FAS:mae

Organized as the Santa Clara County Central Fire Protection District

*Serving Santa Clara County and the communities of Campbell, Cupertino, Los Altos,
Los Altos Hills, Los Gatos, Monte Sereno, and Saratoga*

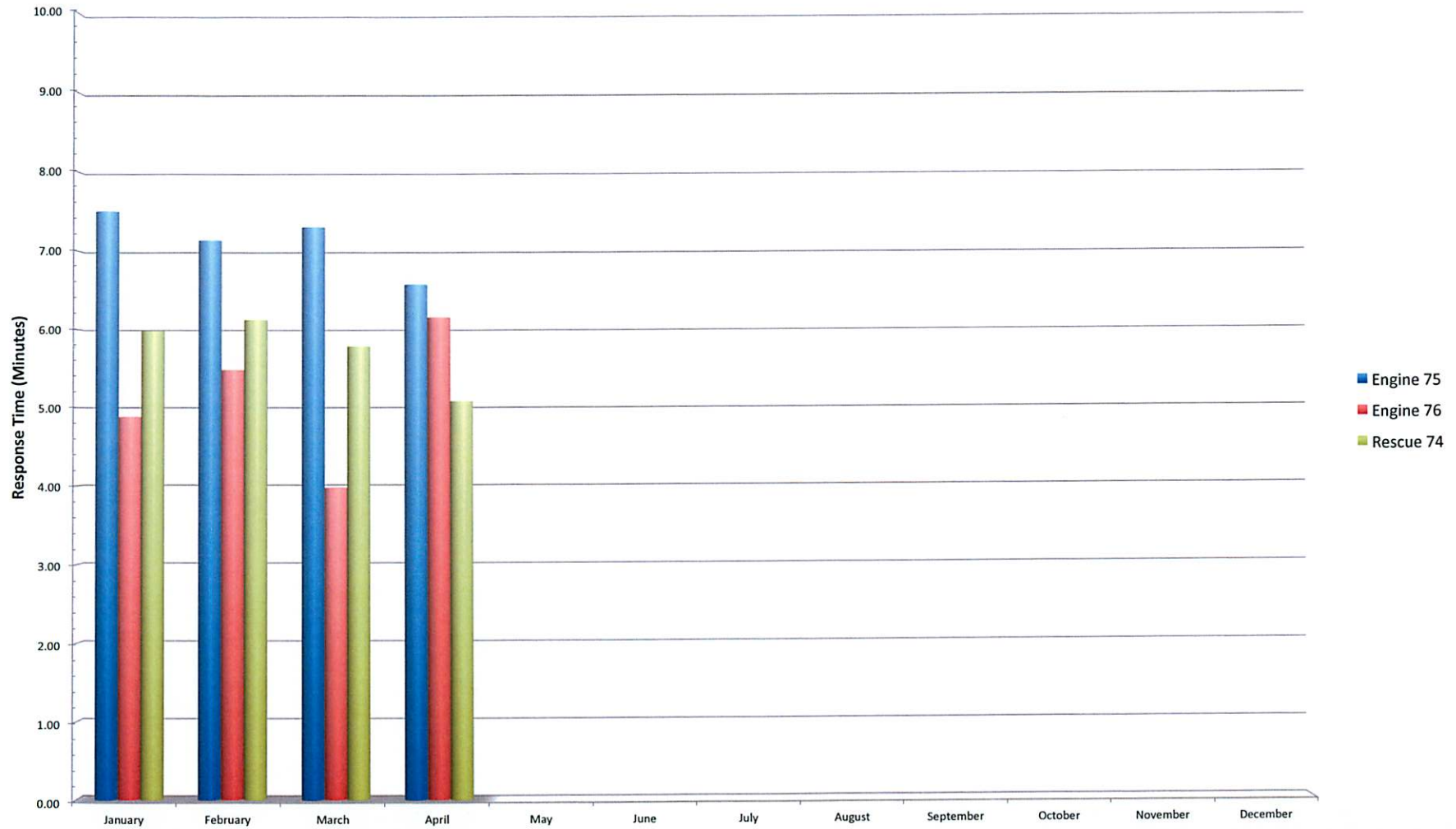
Los Altos Hills County Fire District
Response Time Analysis
2015, 2014 & 2013

Los Altos Hills County Fire District 2015												
	January	February	March	April	May	June	July	August	September	October	November	December
Rescue 74	5.98	6.12	5.78	5.08								
Engine 75	7.50	7.13	7.30	6.57								
Engine 76	4.88	5.48	3.97	6.15								

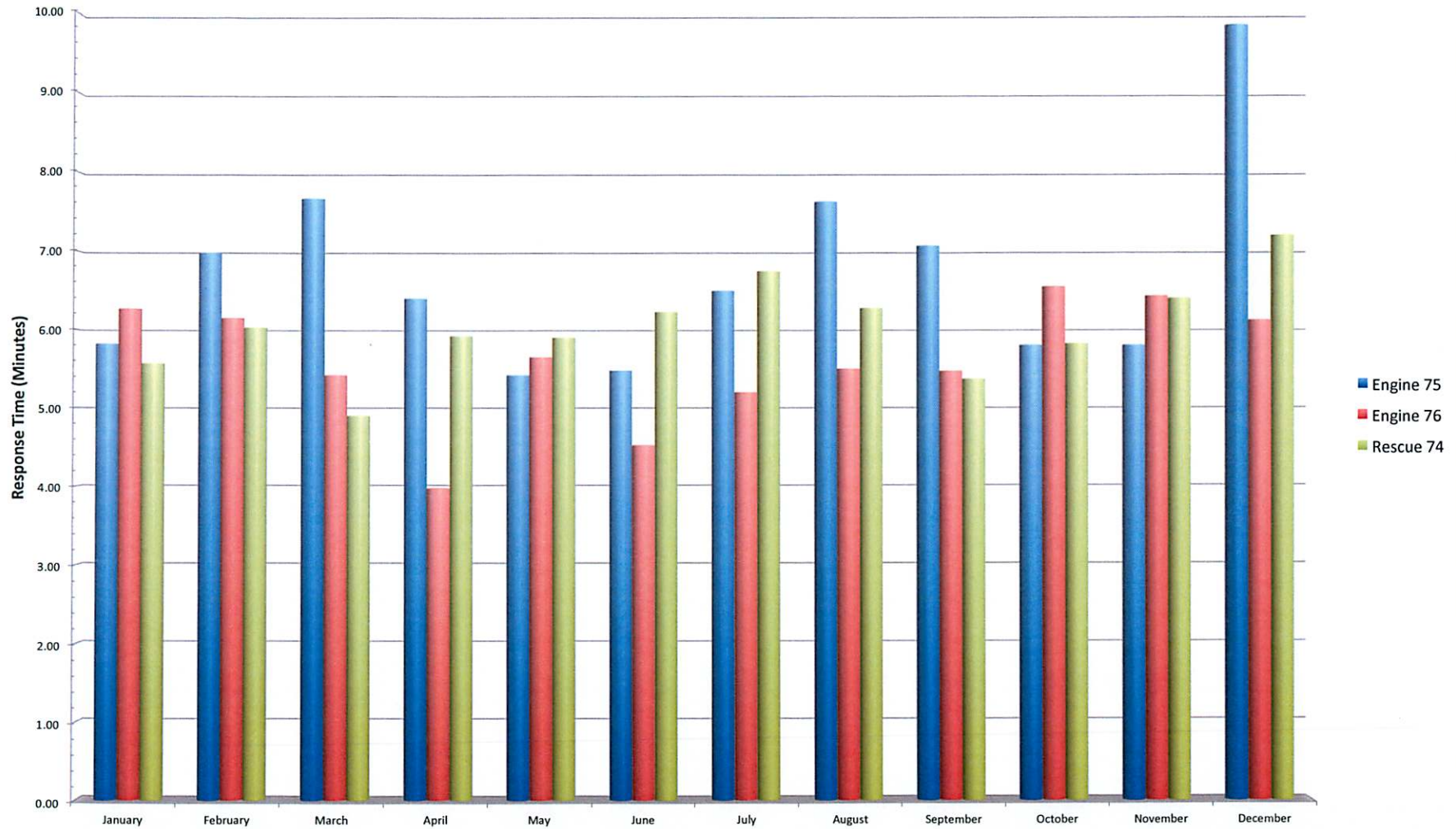
Los Altos Hills County Fire District 2014												
	January	February	March	April	May	June	July	August	September	October	November	December
Rescue 74	5.57	6.03	4.90	5.92	5.90	6.23	6.75	6.28	5.37	5.82	6.40	7.20
Engine 75	5.82	6.98	7.67	6.40	5.42	5.48	6.50	7.63	7.07	5.80	5.80	9.85
Engine 76	6.27	6.15	5.42	3.97	5.65	4.52	5.20	5.50	5.47	6.55	6.43	6.12

Los Altos Hills County Fire District 2013												
	January	February	March	April	May	June	July	August	September	October	November	December
Rescue 74	8.63	7.48	6.47	6.23	5.33	6.70	7.08	5.98	6.63	6.20	6.70	6.12
Engine 75	5.95	5.28	6.23	5.18	6.63	3.08	6.10	7.35	6.23	8.35	5.50	7.82
Engine 76	6.52	5.65	5.55	5.77	7.98	5.87	5.65	6.12	5.52	8.10	0.00	5.65

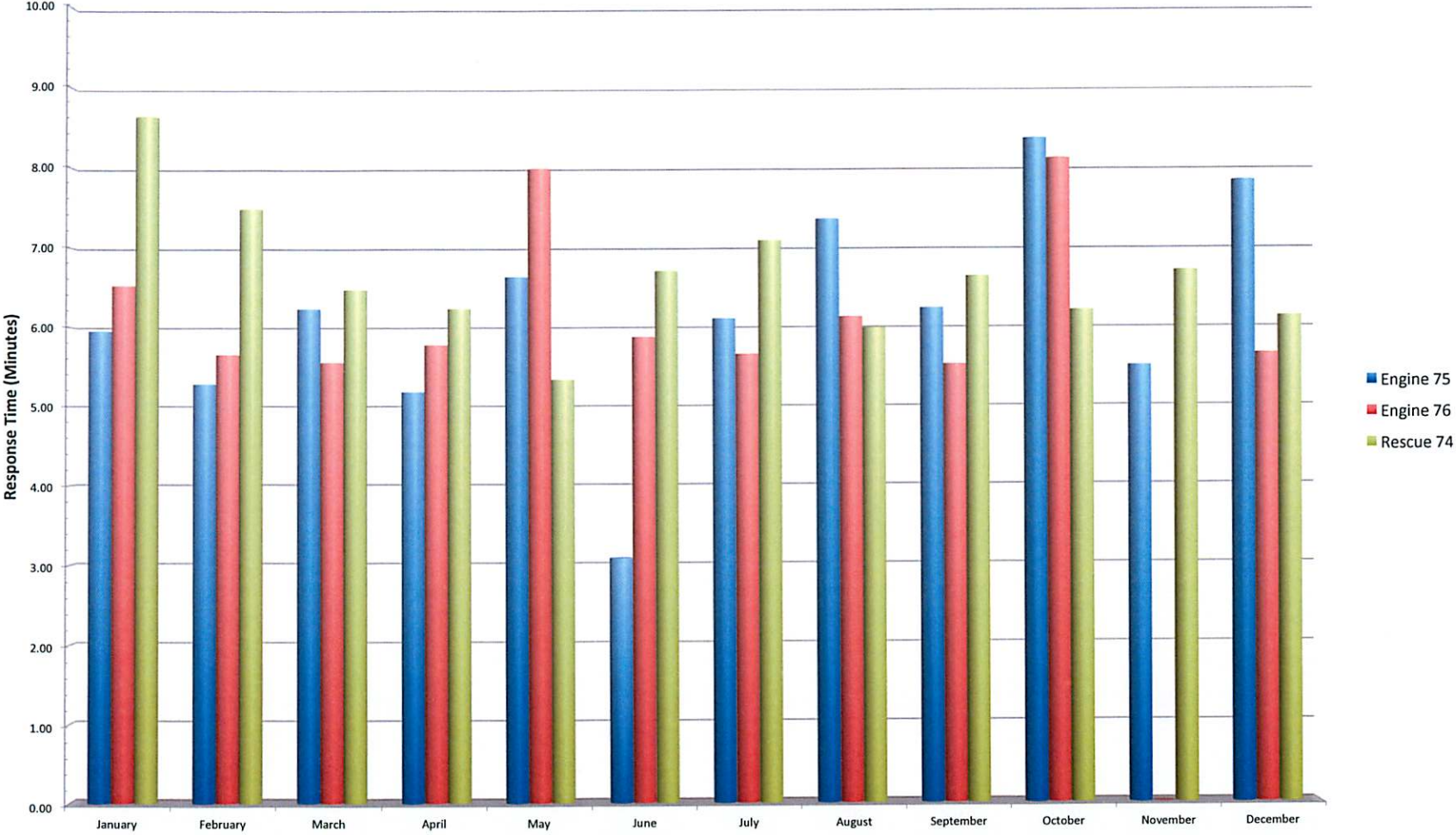
Los Altos Hills County Fire District
Average Response Times for Code 3 Calls
2015



Los Altos Hills County Fire District
Average Response Times for Code 3 Calls
2014



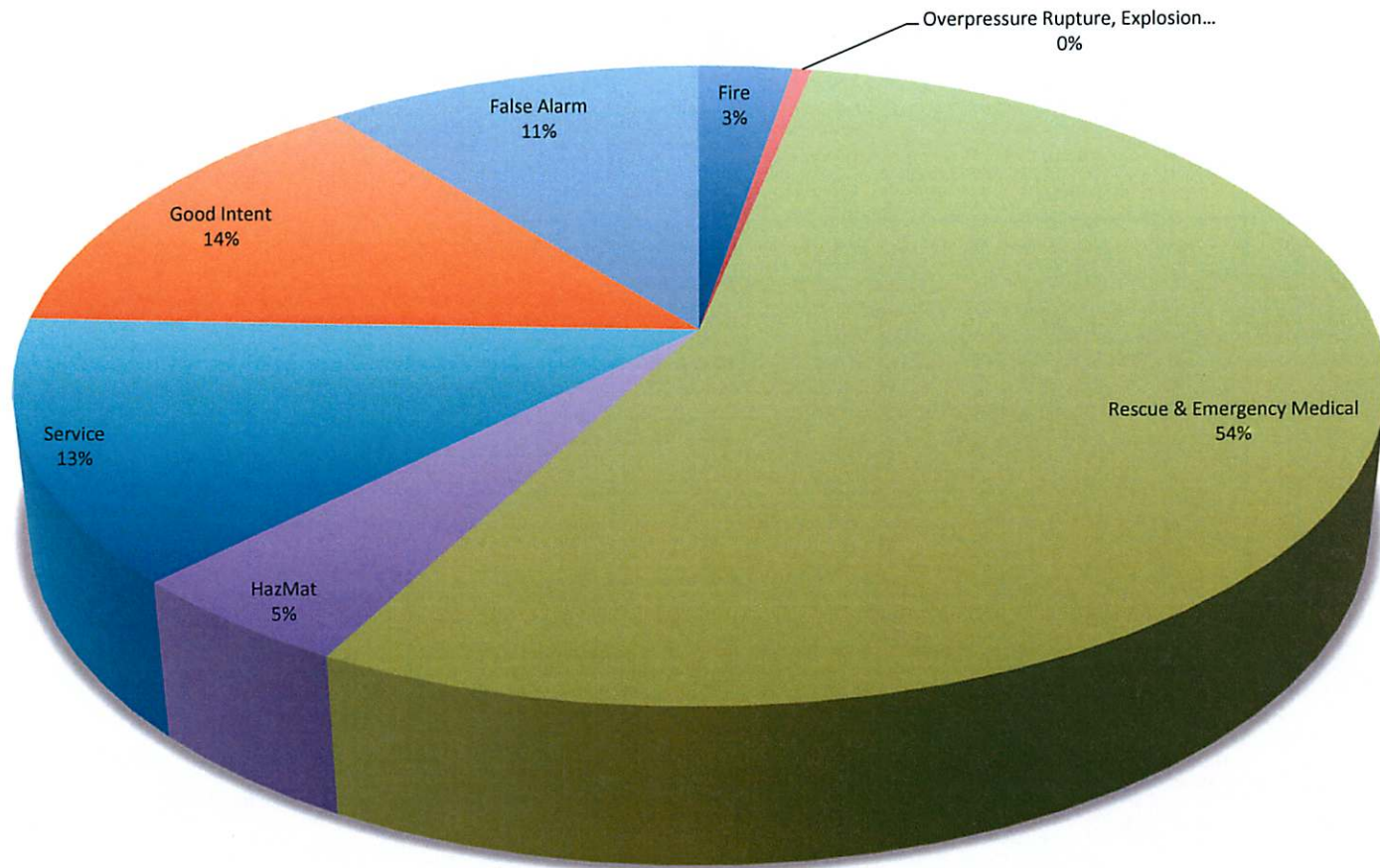
Los Altos Hills County Fire District
Average Response Times for Code 3 Calls
2013



Los Altos Hills County Fire District
Incident Types by Month
2015, 2014 & 2013

Fire	Year	January	February	March	April	May	June	July	August	September	October	November	December	Total
	2015	2	-	-	3									5
	2014	1	2	-	-	-	3	3	1	-	2	1	-	13
	2013	2	-	1	1	3	2	1	1	-	2	-	3	16
Overpressure Rupture, Explosion, Overheat (No Fire)	Year	January	February	March	April	May	June	July	August	September	October	November	December	Total
	2015	-	1	-	-									1
	2014	1	-	-	-	-	-	-	1	-	-	-	-	2
	2013	-	-	1	-	2	-	1	-	-	-	-	-	4
Rescue & Emergency Medical Service	Year	January	February	March	April	May	June	July	August	September	October	November	December	Total
	2015	31	26	28	18									103
	2014	25	25	25	24	33	21	18	24	32	29	37	20	313
	2013	11	23	17	31	24	34	30	14	19	29	23	27	282
Hazardous Condition (No Fire)	Year	January	February	March	April	May	June	July	August	September	October	November	December	Total
	2015	3	5	1	-									9
	2014	-	1	-	3	1	2	2	2	1	2	-	4	18
	2013	-	-	-	-	2	3	1	-	-	2	-	2	10
Service Call	Year	January	February	March	April	May	June	July	August	September	October	November	December	Total
	2015	4	7	7	7									25
	2014	12	7	5	7	5	5	7	4	3	4	6	14	79
	2013	4	6	6	5	10	6	5	5	11	3	1	10	72
Good Intent Call	Year	January	February	March	April	May	June	July	August	September	October	November	December	Total
	2015	9	6	5	6									26
	2014	8	9	7	8	12	6	12	15	6	6	9	9	107
	2013	7	12	9	13	14	10	12	12	12	8	5	11	125
False Alarm & False Call	Year	January	February	March	April	May	June	July	August	September	October	November	December	Total
	2015	7	2	5	6									20
	2014	7	5	8	3	3	7	9	2	4	14	6	10	78
	2013	4	3	1	12	4	3	5	7	12	6	9	9	75
Special Incident	Year	January	February	March	April	May	June	July	August	September	October	November	December	Total
	2015	-	-	-	-									0
	2014	-	-	-	-	1	-	-	-	-	-	-	-	1
	2013	-	-	-	-	-	-	-	-	-	-	-	-	0
Total Incidents	Year	January	February	March	April	May	June	July	August	September	October	November	December	Total
	2015	56	47	46	40	-	-	-	-	-	-	-	-	189
	2014	54	49	45	45	55	44	51	49	46	57	59	57	611
	2013	28	44	35	62	59	58	55	39	54	50	38	62	584

**Los Altos Hills County Fire District
Service Calls by Type
2015**



Los Altos Hills County Fire District
Monetary Loss by Month and Incident Type
2015, 2014 & 2013

Building Fire	Year	January	February	March	April	May	June	July	August	September	October	November	December	Total
	2015	16,500	-	-	-	-	-	-	-	-	-	-	-	16,500
	2014	-	2,000	-	-	-	-	-	-	-	200,000	100,000	-	302,000
	2013	400,000	-	950,000	-	500	-	-	-	-	500	-	3,592,500	4,943,500
Vehicle Fire	Year	January	February	March	April	May	June	July	August	September	October	November	December	Total
	2015	-	-	-	4,000	-	-	-	-	-	-	-	-	4,000
	2014	-	5,000	-	-	-	-	-	-	-	-	-	-	5,000
	2013	8,000	-	-	-	-	-	-	200	-	-	-	-	8,200
Natural Vegetation Fire	Year	January	February	March	April	May	June	July	August	September	October	November	December	Total
	2015	-	-	-	50	-	-	-	-	-	-	-	-	50
	2014	-	-	-	-	-	-	-	-	-	-	-	-	-
	2013	-	-	-	-	-	-	-	-	-	100	-	50	150
Outside Rubbish/Dumpster...	Year	January	February	March	April	May	June	July	August	September	October	November	December	Total
	2015	-	-	-	-	-	-	-	-	-	-	-	-	-
	2014	-	-	-	-	-	-	-	-	-	50	-	-	50
	2013	-	-	-	4,500	-	30	-	-	-	-	-	-	4,530
Special Outside Fire	Year	January	February	March	April	May	June	July	August	September	October	November	December	Total
	2015	-	-	-	-	-	-	-	-	-	-	-	-	-
	2014	-	-	-	-	-	-	-	-	-	-	-	-	-
	2013	-	-	-	-	-	-	-	-	-	-	-	-	-
Total Fire Loss	Year	January	February	March	April	May	June	July	August	September	October	November	December	Total
	2015	16,500	-	-	4,050	-	-	-	-	-	-	-	-	20,550
	2014	-	7,000	-	-	-	-	-	-	-	200,050	100,000	-	307,050
	2013	408,000	-	950,000	4,500	500	30	-	200	-	600	-	3,592,550	4,956,380

Response Time Centiles

All Districts with Averages

April 2015

Los Altos Hills

First Unit Arriving in Less Than:	1 min.	2 min.	3 min.	4 min.	5 min.	6 min.	7 min.	8 min.	9 min.	10 min.
E72 (1 response)	0.0%	0.0%	0.0%	0.0%	0.0%	0.0%	0.0%	0.0%	100.0%	100.0%
Average Response Time: 8:08										
E75 (6 responses)	0.0%	0.0%	0.0%	0.0%	0.0%	0.0%	83.3%	100.0%	100.0%	100.0%
Average Response Time: 6:34										
E76 (8 responses)	0.0%	0.0%	0.0%	12.5%	25.0%	50.0%	75.0%	87.5%	87.5%	100.0%
Average Response Time: 6:09										
PAE62 (1 response)	0.0%	0.0%	0.0%	0.0%	0.0%	100.0%	100.0%	100.0%	100.0%	100.0%
Average Response Time: 5:31										
R74 (15 responses)	0.0%	0.0%	20.0%	26.7%	33.3%	73.3%	86.7%	100.0%	100.0%	100.0%
Average Response Time: 5:05										
Los Altos Hills (31 responses)	0.0%	0.0%	9.7%	16.1%	22.6%	51.6%	80.6%	93.5%	96.8%	100.0%
Average Response Time: 5:45										

Fire Department

Monthly Incident Type Report (Summary)

Los Altos Hills

Alarm Date Between {4/1/2015} And {4/30/2015} and District =
"LAH "

Incident Type	Property Use	Count	Total Est Loss
1 Fire			
131 Passenger vehicle fire	961 Highway or divided highway	1	\$4,000
140 Natural vegetation fire, Other	963 Street or road in commercial area	1	\$50
154 Dumpster or other outside trash	965 Vehicle parking area	1	\$0
		3	\$4,050
3 Rescue & Emergency Medical Service Incident			
321 EMS call, excluding vehicle accident with injury		17	\$0
321M EMS call, excluding vehicle accident - MCIP		1	\$0
		18	\$0
5 Service Call			
500 Service Call, other		1	\$0
510 Person in distress, Other		1	\$0
554 Assist invalid		5	\$0
		7	\$0
6 Good Intent Call			
611 Dispatched & cancelled en route		3	\$0
6113 Dispatched & cancelled upon arrival		2	\$0
652 Steam, vapor, fog or dust thought to be smoke		1	\$0
		6	\$0
7 False Alarm & False Call			
735 Alarm system sounded due to malfunction		1	\$0
740 Unintentional transmission of alarm, Other		1	\$0
743 Smoke detector activation, no fire - unintentional		1	\$0
744 Detector activation, no fire - unintentional		1	\$0
745 Alarm system activation, no fire - unintentional		2	\$0
		6	\$0

Total Incident Count: 40

Total Est Loss: \$4,050

Fire Department
Monthly Cause of Ignition Report (Summary)
Los Altos Hills

**Alarm Date Between {4/1/2015} And {4/30/2015} and District =
"LAH "**

Cause of Ignition	Count	Total Est Loss
2 Unintentional None	1	\$50
U Cause undetermined after investigation None	1	\$4,000
U Cause undetermined after investigation Undetermined	1	\$0
Total Incident Count:	3	Total Est Loss: \$4,050

SANTA CLARA COUNTY FIRE DEPARTMENT

MONTHLY / CALENDAR YEAR REPORT for April 2015

Classification of Alarm	This Month City	This Month District	This Year City	This Year District	Last YTD City	Last YTD District
A. Number of Fires:						
Structures	3	0	7	1	1	1
Refuse/Debris	0	1	0	1	0	0
Misc. Outdoor	0	0	0	0	2	1
Vegetation	0	1	0	2	0	0
Vehicle	1	1	1	1	4	1
A. Total Fires	4	3	8	5	7	3
B. Number of Non-Fires:						
Accidental/Vicinity Alarm	39	11	151	42	135	49
Intentional False	0	0	0	0	1	2
Smoke/Gas Investigation	1	1	23	10	19	9
Hazardous Materials	2	0	7	4	7	3
Medical Emergency	107	18	408	84	415	86
Rescue	2	0	25	19	31	13
Public Service	20	7	77	25	70	28
B. Total Other Calls	171	37	691	184	678	190
Total A + B	175	40	699	189	685	193
C. Number of All Other Calls	(see note below)					
Auto Aid-In						
Auto Aid to PA, MV, SUN						
Mutual Aid-In	data not avail.		data not avail.			
Mutual Aid to PA, MV, SUN	data not avail.		data not avail.		data not avail.	
C. Total Other Calls	data not avail.		data not avail.		data not avail.	
D. TOTAL CALLS	175	40	699	189	685	193
E. Number of Injuries/Fatalities						
Fire Injuries-Citizens	0		0		0	
Fire Injuries-FF	0		0		0	
Fire Fatalities-Citizens	0		0		0	
Fire Fatalities-FF	0		0		0	
F. Estimated Dollar Fire Loss						
Structure	\$60,650	\$0	\$177,750	\$16,500	\$600	\$2,000
Vehicles	\$11,500	\$4,000	\$11,500	\$4,000	\$8,600	\$5,000
All Other	\$0	\$50	\$0	\$50	\$14,501	\$0
F. Total Dollar Loss	\$72,150	\$4,050	\$189,250	\$20,550	\$23,701	\$7,000

Note: LOS and LAH figures for Auto/Mutual Aid and injury data are combined.
 Vicinity alarms include UTL.
 Vehicle accidents are shown as rescues unless they are reported as medical calls.

mae
 5/5/15
 11:44 AM