



## FIRE DEPARTMENT SANTA CLARA COUNTY



14700 Winchester Blvd., Los Gatos, CA 95032-1818  
(408) 378-4010 • (408) 378-9342 (fax) • [www.sccfd.org](http://www.sccfd.org)

August 4, 2015

Los Altos Hills County Fire District Commissioners  
12355 El Monte Road  
Los Altos Hills, CA 94022

Subject: Fire Report for July 2015

To Whom It May Concern:

The July 2015 fire reports for the Los Altos Hills County Fire District are enclosed:

1. Average Response Time Analysis: This report provides data for the last three fiscal years on the average time it took for each first-in unit to arrive on scene. The computation starts from the moment the dispatcher makes his/her first keystroke at the command panel (after the call has been handed-off by the Emergency 911 telephone handler). This information is also graphically represented in the accompanying bar charts.

The average response times for Code 3 calls were as follows:

Rescue 74: 6.08  
Engine 75: 4.23  
Engine 76: 6.35

2. Incident Types by Month: This report summarizes on a monthly basis, the number of incidents by call type, for every emergency vehicle that was the first unit on-scene. This information is also graphically represented in a pie chart depicting the number of incidents by type.
3. Monetary Fire Loss by Month and Incident Type: This report presents the monthly dollar loss in each of the fire type categories for the last three fiscal years.

The fire loss for this month was \$8,700.

Please let me know if you have any questions about the data contained in this report.

Sincerely,

Fred A. Schulenburg  
Director of Business Services

Enclosures

c: Joe Parker, Deputy Chief

FAS:mae

---

Organized as the Santa Clara County Central Fire Protection District

Serving Santa Clara County and the communities of Campbell, Cupertino, Los Altos,  
Los Altos Hills, Los Gatos, Monte Sereno, and Saratoga

---

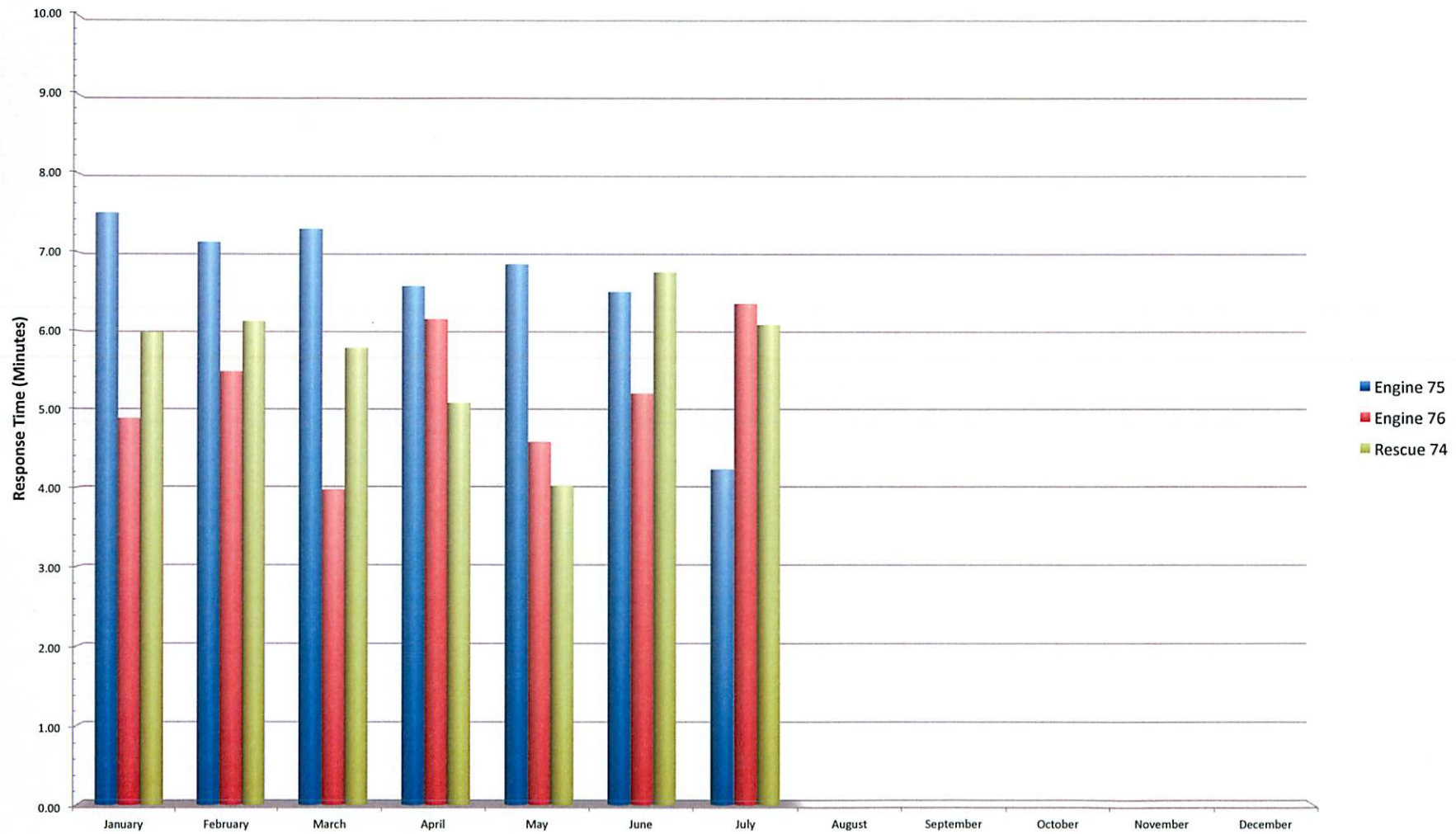
**Los Altos Hills County Fire District  
Response Time Analysis  
2015, 2014 & 2013**

Los Altos Hills County Fire District 2015												
	January	February	March	April	May	June	July	August	September	October	November	December
Rescue 74	5.98	6.12	5.78	5.08	4.02	6.75	6.08					
Engine 75	7.50	7.13	7.30	6.57	6.85	6.50	4.23					
Engine 76	4.88	5.48	3.97	6.15	4.58	5.20	6.35					

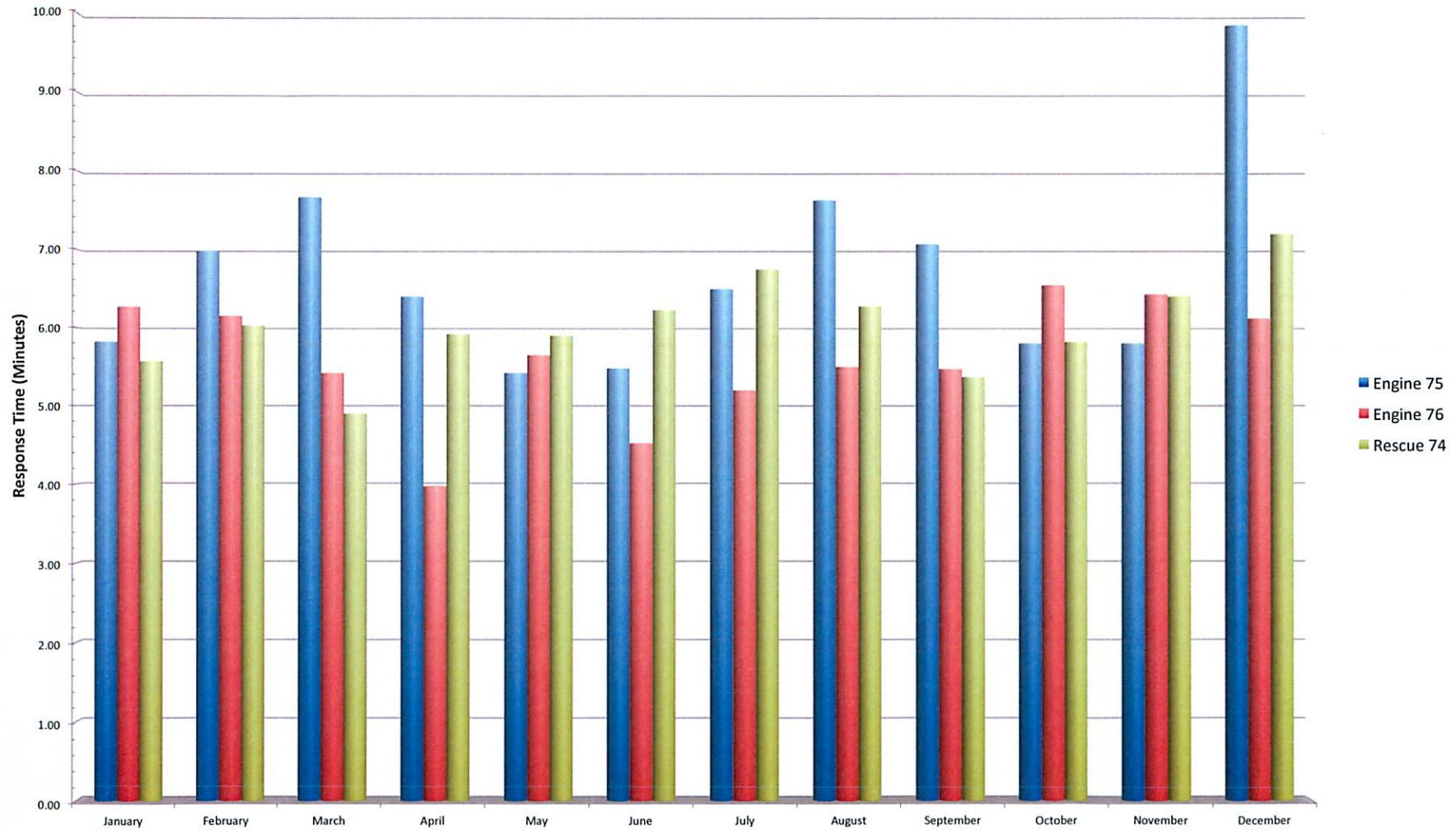
Los Altos Hills County Fire District 2014												
	January	February	March	April	May	June	July	August	September	October	November	December
Rescue 74	5.57	6.03	4.90	5.92	5.90	6.23	6.75	6.28	5.37	5.82	6.40	7.20
Engine 75	5.82	6.98	7.67	6.40	5.42	5.48	6.50	7.63	7.07	5.80	5.80	9.85
Engine 76	6.27	6.15	5.42	3.97	5.65	4.52	5.20	5.50	5.47	6.55	6.43	6.12

Los Altos Hills County Fire District 2013												
	January	February	March	April	May	June	July	August	September	October	November	December
Rescue 74	8.63	7.48	6.47	6.23	5.33	6.70	7.08	5.98	6.63	6.20	6.70	6.12
Engine 75	5.95	5.28	6.23	5.18	6.63	3.08	6.10	7.35	6.23	8.35	5.50	7.82
Engine 76	6.52	5.65	5.55	5.77	7.98	5.87	5.65	6.12	5.52	8.10	0.00	5.65

Los Altos Hills County Fire District  
Average Response Times for Code 3 Calls  
2015

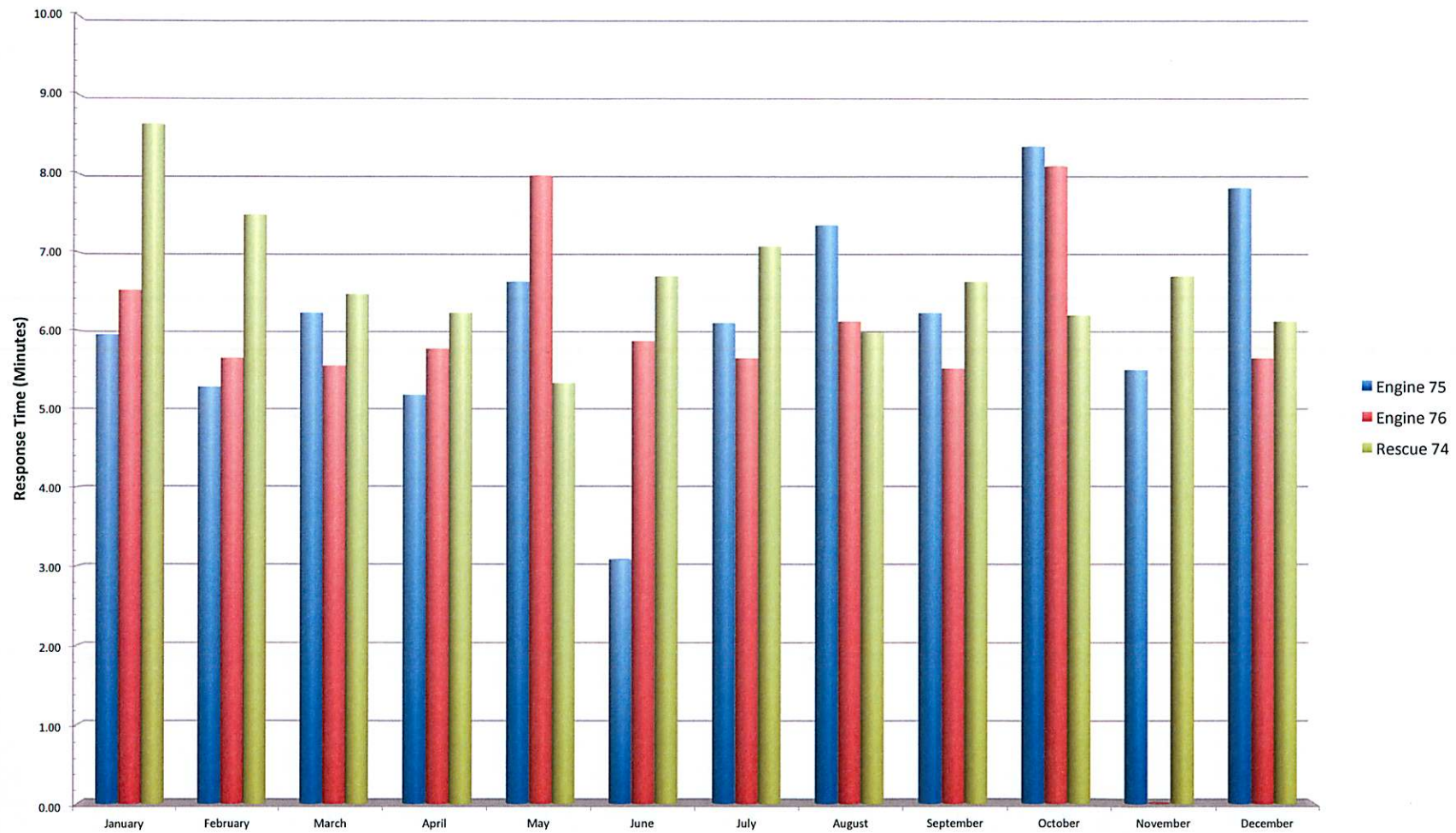


Los Altos Hills County Fire District  
Average Response Times for Code 3 Calls  
2014





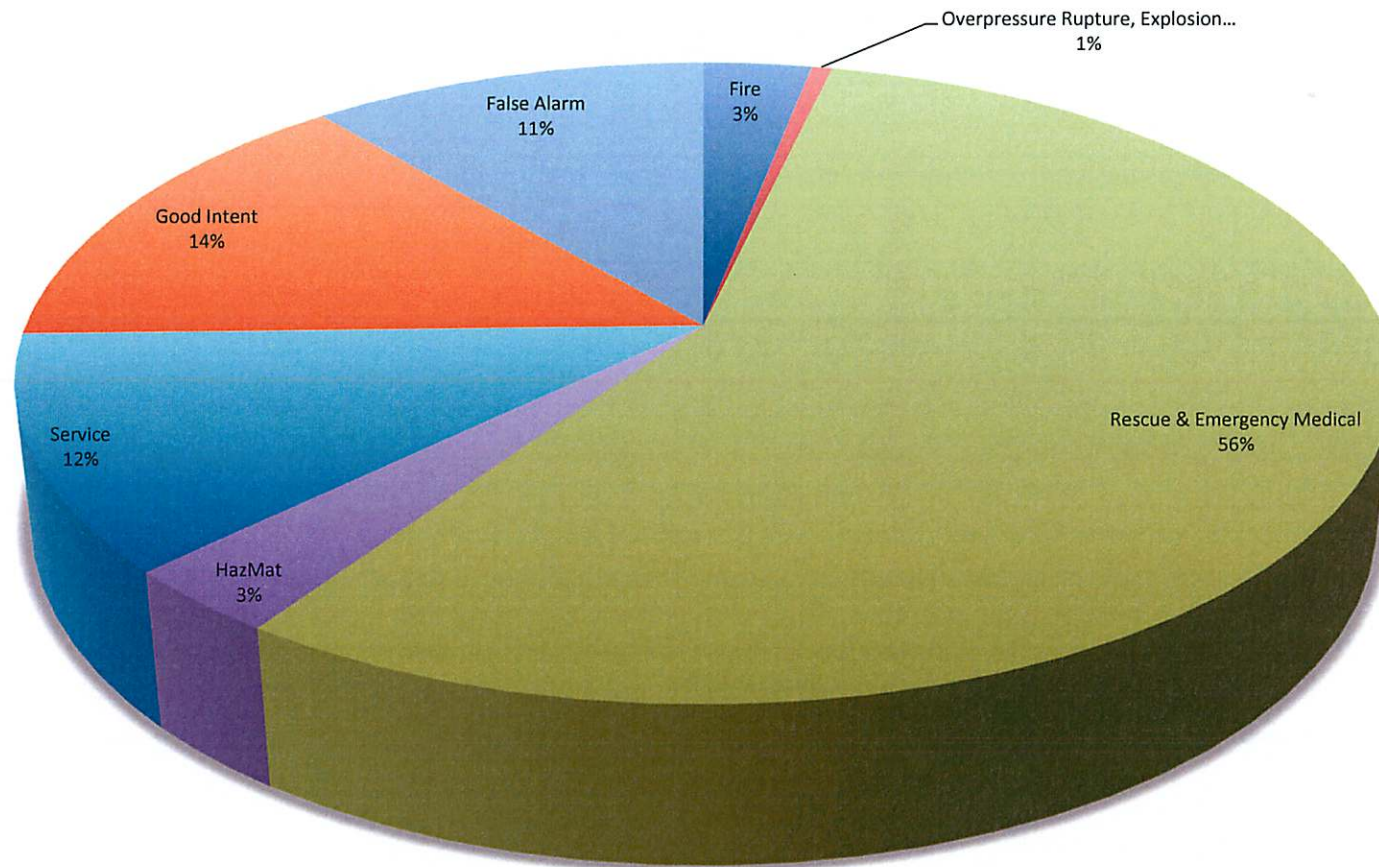
Los Altos Hills County Fire District  
Average Response Times for Code 3 Calls  
2013



**Los Altos Hills County Fire District**  
**Incident Types by Month**  
**2015, 2014 & 2013**

Fire	Year	January	February	March	April	May	June	July	August	September	October	November	December	Total
	2015	2	-	-	3	1	2	3						11
	2014	1	2	-	-	-	3	3	1	-	2	1	-	13
	2013	2	-	1	1	3	2	1	1	-	2	-	3	16
Overpressure Rupture, Explosion, Overheat (No Fire)	Year	January	February	March	April	May	June	July	August	September	October	November	December	Total
	2015	-	1	-	-	-	1	-						2
	2014	1	-	-	-	-	-	-	1	-	-	-	-	2
	2013	-	-	1	-	2	-	1	-	-	-	-	-	4
Rescue & Emergency Medical Service	Year	January	February	March	April	May	June	July	August	September	October	November	December	Total
	2015	31	26	28	18	42	31	26						202
	2014	25	25	25	24	33	21	18	24	32	29	37	20	313
	2013	11	23	17	31	24	34	30	14	19	29	23	27	282
Hazardous Condition (No Fire)	Year	January	February	March	April	May	June	July	August	September	October	November	December	Total
	2015	3	5	1	-	1	1	1						12
	2014	-	1	-	3	1	2	2	2	1	2	-	4	18
	2013	-	-	-	-	2	3	1	-	-	2	-	2	10
Service Call	Year	January	February	March	April	May	June	July	August	September	October	November	December	Total
	2015	4	7	7	7	4	8	6						43
	2014	12	7	5	7	5	5	7	4	3	4	6	14	79
	2013	4	6	6	5	10	6	5	5	11	3	1	10	72
Good Intent Call	Year	January	February	March	April	May	June	July	August	September	October	November	December	Total
	2015	9	6	5	6	10	7	9						52
	2014	8	9	7	8	12	6	12	15	6	6	9	9	107
	2013	7	12	9	13	14	10	12	12	12	8	5	11	125
False Alarm & False Call	Year	January	February	March	April	May	June	July	August	September	October	November	December	Total
	2015	7	2	5	6	3	12	5						40
	2014	7	5	8	3	3	7	9	2	4	14	6	10	78
	2013	4	3	1	12	4	3	5	7	12	6	9	9	75
Special Incident	Year	January	February	March	April	May	June	July	August	September	October	November	December	Total
	2015	-	-	-	-	-	-	-						0
	2014	-	-	-	-	1	-	-	-	-	-	-	-	1
	2013	-	-	-	-	-	-	-	-	-	-	-	-	0
Total Incidents	Year	January	February	March	April	May	June	July	August	September	October	November	December	Total
	2015	56	47	46	40	61	62	50	-	-	-	-	-	362
	2014	54	49	45	45	55	44	51	49	46	57	59	57	611
	2013	28	44	35	62	59	58	55	39	54	50	38	62	584

**Los Altos Hills County Fire District  
Service Calls by Type  
2015**



**Los Altos Hills County Fire District**  
**Monetary Loss by Month and Incident Type**  
**2015, 2014 & 2013**

Building Fire	Year	January	February	March	April	May	June	July	August	September	October	November	December	Total
	2015	16,500	-	-	-	-	2,000	2,000						20,500
	2014	-	2,000	-	-	-	-	-	-	-	200,000	100,000	-	302,000
	2013	400,000	-	950,000	-	500	-	-	-	-	500	-	3,592,500	4,943,500
Vehicle Fire	Year	January	February	March	April	May	June	July	August	September	October	November	December	Total
	2015	-	-	-	4,000	-	-	1,700						5,700
	2014	-	5,000	-	-	-	-	-	-	-	-	-	-	5,000
	2013	8,000	-	-	-	-	-	-	200	-	-	-	-	8,200
Natural Vegetation Fire	Year	January	February	March	April	May	June	July	August	September	October	November	December	Total
	2015	-	-	-	50	1	-	5,000						5,051
	2014	-	-	-	-	-	-	-	-	-	-	-	-	-
	2013	-	-	-	-	-	-	-	-	-	100	-	50	150
Outside Rubbish/Dumpster...	Year	January	February	March	April	May	June	July	August	September	October	November	December	Total
	2015	-	-	-	-	-	-	-						-
	2014	-	-	-	-	-	-	-	-	-	50	-	-	50
	2013	-	-	-	4,500	-	30	-	-	-	-	-	-	4,530
Special Outside Fire	Year	January	February	March	April	May	June	July	August	September	October	November	December	Total
	2015	-	-	-	-	-	-	-						-
	2014	-	-	-	-	-	-	-	-	-	-	-	-	-
	2013	-	-	-	-	-	-	-	-	-	-	-	-	-
Total Fire Loss	Year	January	February	March	April	May	June	July	August	September	October	November	December	Total
	2015	16,500	-	-	4,050	1	2,000	8,700	-	-	-	-	-	31,251
	2014	-	7,000	-	-	-	-	-	-	-	200,050	100,000	-	307,050
	2013	408,000	-	950,000	4,500	500	30	-	200	-	600	-	3,592,550	4,956,380



---

# Response Time Centiles

*All Districts with Averages*

---

**July 2015**

**Los Altos Hills**

First Unit Arriving in Less Than:	1 min.	2 min.	3 min.	4 min.	5 min.	6 min.	7 min.	8 min.	9 min.	10 min.
<b>CM18 (1 response)</b>	0.0%	0.0%	0.0%	0.0%	0.0%	100.0%	100.0%	100.0%	100.0%	100.0%
Average Response Time: 5:00										
<b>E374 (3 responses)</b>	0.0%	0.0%	0.0%	0.0%	33.3%	33.3%	66.7%	66.7%	66.7%	66.7%
Average Response Time: 6:48										
<b>E75 (3 responses)</b>	0.0%	0.0%	0.0%	33.3%	66.7%	100.0%	100.0%	100.0%	100.0%	100.0%
Average Response Time: 4:14										
<b>E76 (12 responses)</b>	0.0%	0.0%	0.0%	0.0%	16.7%	50.0%	75.0%	91.7%	91.7%	100.0%
Average Response Time: 6:21										
<b>R74 (27 responses)</b>	0.0%	0.0%	7.4%	18.5%	40.7%	59.3%	70.4%	77.8%	81.5%	96.3%
Average Response Time: 6:05										
<b>Los Altos Hills (46 responses)</b>	0.0%	0.0%	4.3%	13.0%	34.8%	58.7%	73.9%	82.6%	84.8%	95.7%
Average Response Time: 6:04										

# Fire Department

## Monthly Incident Type Report (Summary)

### Los Altos Hills

Alarm Date Between {7/1/2015} And {7/31/2015} and District =  
"LAH "

Incident Type	Property Use	Count	Total Est Loss
<b>1 Fire</b>			
100 Fire, Other	213 Elementary school, including	1	\$2,000
131 Passenger vehicle fire	961 Highway or divided highway	1	\$1,700
140 Natural vegetation fire, Other	900 Outside or special property, Other	1	\$5,000
		<b>3</b>	<b>\$8,700</b>
<b>3 Rescue &amp; Emergency Medical Service Incident</b>			
311 Medical assist, assist EMS crew		2	\$0
321 EMS call, excluding vehicle accident with injury		21	\$0
322 Motor vehicle accident with injuries		1	\$0
324 Motor Vehicle Accident with no injuries		2	\$0
		<b>26</b>	<b>\$0</b>
<b>4 Hazardous Condition (No Fire)</b>			
440 Electrical wiring/equipment problem, Other		1	\$0
		<b>1</b>	<b>\$0</b>
<b>5 Service Call</b>			
522 Water or steam leak		1	\$0
554 Assist invalid		5	\$0
		<b>6</b>	<b>\$0</b>
<b>6 Good Intent Call</b>			
611 Dispatched & cancelled en route		1	\$0
6112 Dispatched & cancelled prior to going en route		1	\$0
622 No Incident found on arrival at dispatch address		4	\$0
651 Smoke scare, odor of smoke		2	\$0
653 Smoke from barbecue, tar kettle		1	\$0
		<b>9</b>	<b>\$0</b>
<b>7 False Alarm &amp; False Call</b>			
700 False alarm or false call, Other		1	\$0
740 Unintentional transmission of alarm, Other		2	\$0
745 Alarm system activation, no fire - unintentional		2	\$0
		<b>5</b>	<b>\$0</b>

**Total Incident Count: 50**

**Total Est Loss: \$8,700**

**Fire Department**  
**Monthly Cause of Ignition Report (Summary)**  
**Los Altos Hills**

Alarm Date Between {7/1/2015} And {7/31/2015} and District =  
"LAH "

Cause of Ignition	Count	Total Est Loss
1 Intentional	1	\$2,000
Undetermined		
2 Unintentional	1	\$1,700
Mechanical failure, malfunction, Other		
U Cause undetermined after investigation	1	\$5,000
None		
Total Incident Count:		3
Total Est Loss:		\$8,700

SANTA CLARA COUNTY FIRE DEPARTMENT

MONTHLY / CALENDAR YEAR REPORT for July 2015

Classification of Alarm	This Month City	This Month District	This Year City	This Year District	Last YTD City	Last YTD District
<b>A. Number of Fires:</b>						
Structures	2	1	10	2	2	2
Refuse/Debris	0	0	0	1	3	1
Misc. Outdoor	0	0	1	0	4	1
Vegetation	1	1	3	5	1	4
Vehicle	0	1	1	3	4	1
<b>A. Total Fires</b>	<b>3</b>	<b>3</b>	<b>15</b>	<b>11</b>	<b>14</b>	<b>9</b>
<b>B. Number of Non-Fires:</b>						
Accidental/Vicinity Alarm	35	11	280	83	270	95
Intentional False	0	0	0	0	1	2
Smoke/Gas Investigation	6	4	38	19	41	18
Hazardous Materials	1	0	10	4	14	4
Medical Emergency	99	23	775	172	738	150
Rescue	7	3	42	30	47	21
Public Service	30	6	140	43	105	44
<b>B. Total Other Calls</b>	<b>178</b>	<b>47</b>	<b>1,285</b>	<b>351</b>	<b>1,216</b>	<b>334</b>
<b>Total A + B</b>	<b>181</b>	<b>50</b>	<b>1,300</b>	<b>362</b>	<b>1,230</b>	<b>343</b>
<b>C. Number of All Other Calls</b>	(see note below)					
Auto Aid-In						
Auto Aid to PA, MV, SUN						
Mutual Aid-In	data not avail.		data not avail.			
Mutual Aid to PA, MV, SUN	data not avail.		data not avail.		data not avail.	
<b>C. Total Other Calls</b>	data not avail.		data not avail.		data not avail.	
<b>D. TOTAL CALLS</b>	<b>181</b>	<b>50</b>	<b>1,300</b>	<b>362</b>	<b>1,230</b>	<b>343</b>
<b>E. Number of Injuries/Fatalities</b>						
Fire Injuries-Citizens	0		0		0	
Fire Injuries-FF	0		0		0	
Fire Fatalities-Citizens	0		0		0	
Fire Fatalities-FF	0		0		0	
<b>F. Estimated Dollar Fire Loss</b>						
Structure	\$8,000	\$2,000	\$8,000	\$2,000	\$2,200	\$2,000
Vehicles	\$0	\$1,700	\$0	\$3,700	\$8,800	\$5,000
All Other	\$10	\$5,000	\$160	\$5,000	\$16,501	\$0
<b>F. Total Dollar Loss</b>	<b>\$8,010</b>	<b>\$8,700</b>	<b>\$8,160</b>	<b>\$10,700</b>	<b>\$27,501</b>	<b>\$7,000</b>

Note: LOS and LAH figures for Auto/Mutual Aid and injury data are combined.  
 Vicinity alarms include UTL.  
 Vehicle accidents are shown as rescues unless they are reported as medical calls.

mae  
 8/4/15  
 12:48 PM





## FIRE DEPARTMENT SANTA CLARA COUNTY



14700 Winchester Blvd., Los Gatos, CA 95032-1818  
(408) 378-4010 • (408) 378-9342 (fax) • [www.sccfd.org](http://www.sccfd.org)

September 3, 2015

Los Altos Hills County Fire District Commissioners  
12355 El Monte Road  
Los Altos Hills, CA 94022

Subject: Fire Report for August 2015

To Whom It May Concern:

The August 2015 fire reports for the Los Altos Hills County Fire District are enclosed:

1. Average Response Time Analysis: This report provides data for the last three fiscal years on the average time it took for each first-in unit to arrive on scene. The computation starts from the moment the dispatcher makes his/her first keystroke at the command panel (after the call has been handed-off by the Emergency 911 telephone handler). This information is also graphically represented in the accompanying bar charts.

The average response times for Code 3 calls were as follows:

Rescue 74: 6.10  
Engine 75: 6.58  
Engine 76: 6.20

2. Incident Types by Month: This report summarizes on a monthly basis, the number of incidents by call type, for every emergency vehicle that was the first unit on-scene. This information is also graphically represented in a pie chart depicting the number of incidents by type.
3. Monetary Fire Loss by Month and Incident Type: This report presents the monthly dollar loss in each of the fire type categories for the last three fiscal years.

The fire loss for this month was \$2,500.

Please let me know if you have any questions about the data contained in this report.

Sincerely,

Fred A. Schulenburg  
Director of Business Services

Enclosures

c: Joe Parker, Deputy Chief

FAS:mae

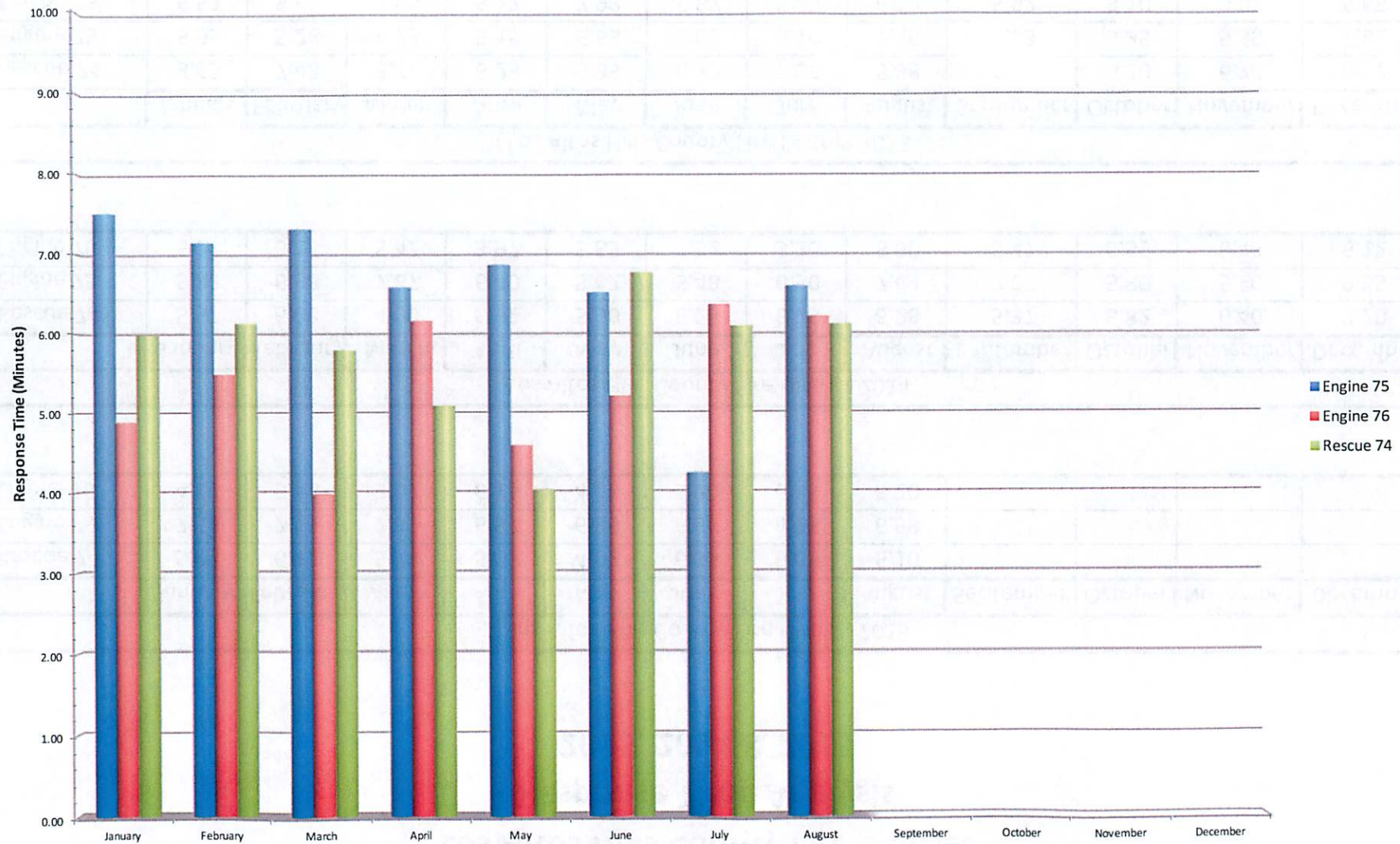
**Los Altos Hills County Fire District**  
**Response Time Analysis**  
**2015, 2014 & 2013**

Los Altos Hills County Fire District 2015												
	January	February	March	April	May	June	July	August	September	October	November	December
Rescue 74	5.98	6.12	5.78	5.08	4.02	6.75	6.08	6.10				
Engine 75	7.50	7.13	7.30	6.57	6.85	6.50	4.23	6.58				
Engine 76	4.88	5.48	3.97	6.15	4.58	5.20	6.35	6.20				

Los Altos Hills County Fire District 2014												
	January	February	March	April	May	June	July	August	September	October	November	December
Rescue 74	5.57	6.03	4.90	5.92	5.90	6.23	6.75	6.28	5.37	5.82	6.40	7.20
Engine 75	5.82	6.98	7.67	6.40	5.42	5.48	6.50	7.63	7.07	5.80	5.80	9.85
Engine 76	6.27	6.15	5.42	3.97	5.65	4.52	5.20	5.50	5.47	6.55	6.43	6.12

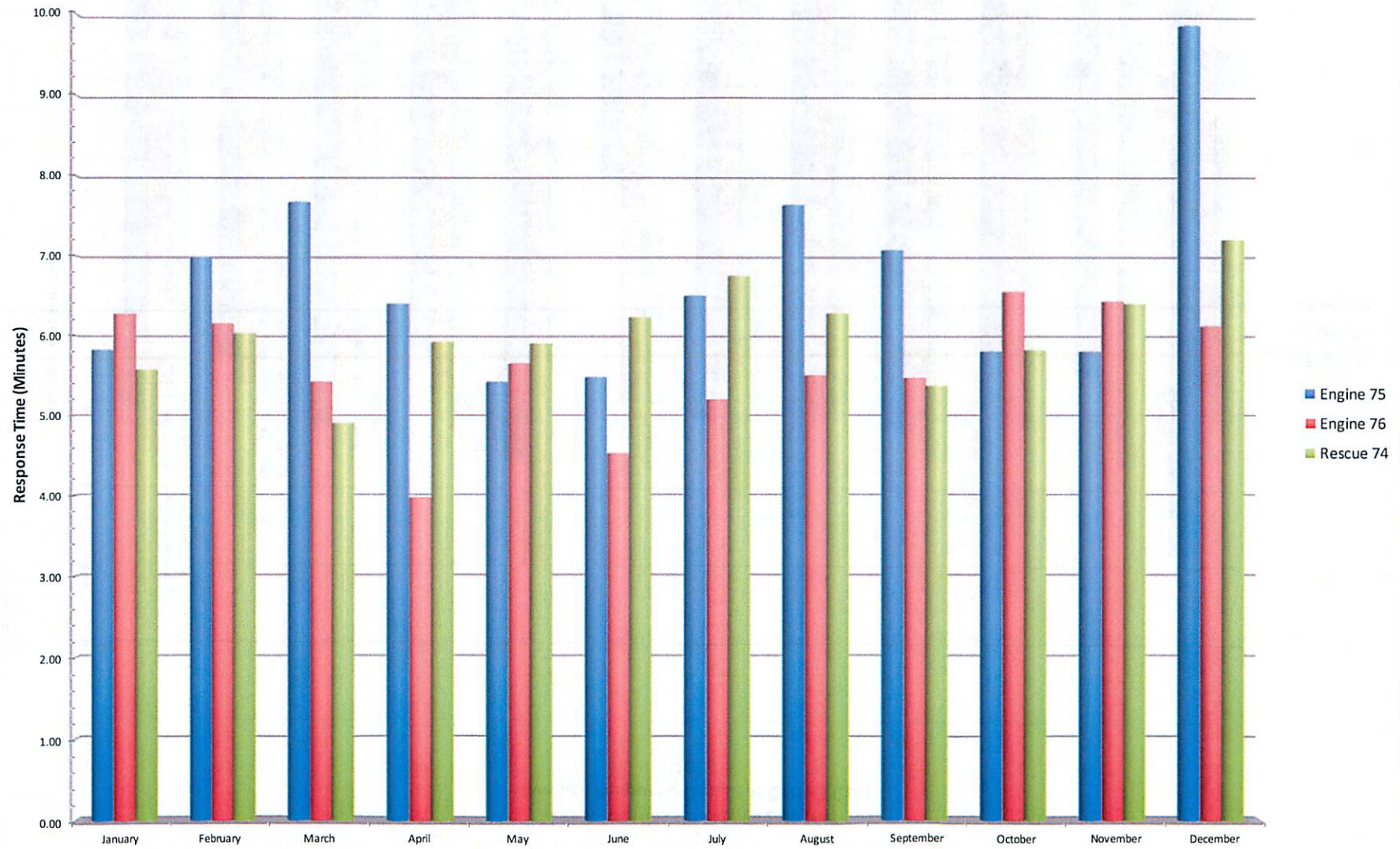
Los Altos Hills County Fire District 2013												
	January	February	March	April	May	June	July	August	September	October	November	December
Rescue 74	8.63	7.48	6.47	6.23	5.33	6.70	7.08	5.98	6.63	6.20	6.70	6.12
Engine 75	5.95	5.28	6.23	5.18	6.63	3.08	6.10	7.35	6.23	8.35	5.50	7.82
Engine 76	6.52	5.65	5.55	5.77	7.98	5.87	5.65	6.12	5.52	8.10	0.00	5.65

Los Altos Hills County Fire District  
Average Response Times for Code 3 Calls  
2015



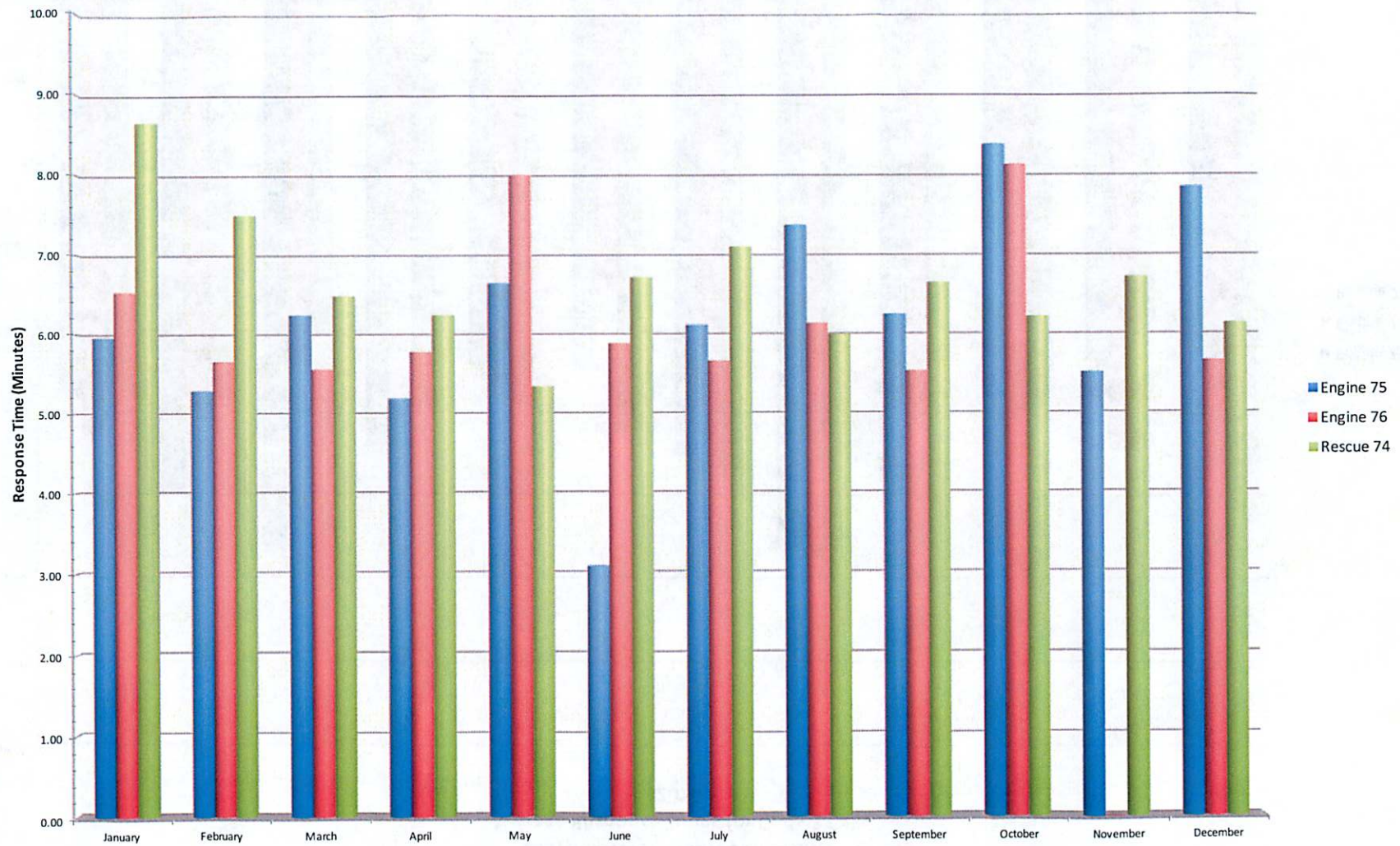


Los Altos Hills County Fire District  
Average Response Times for Code 3 Calls  
2014





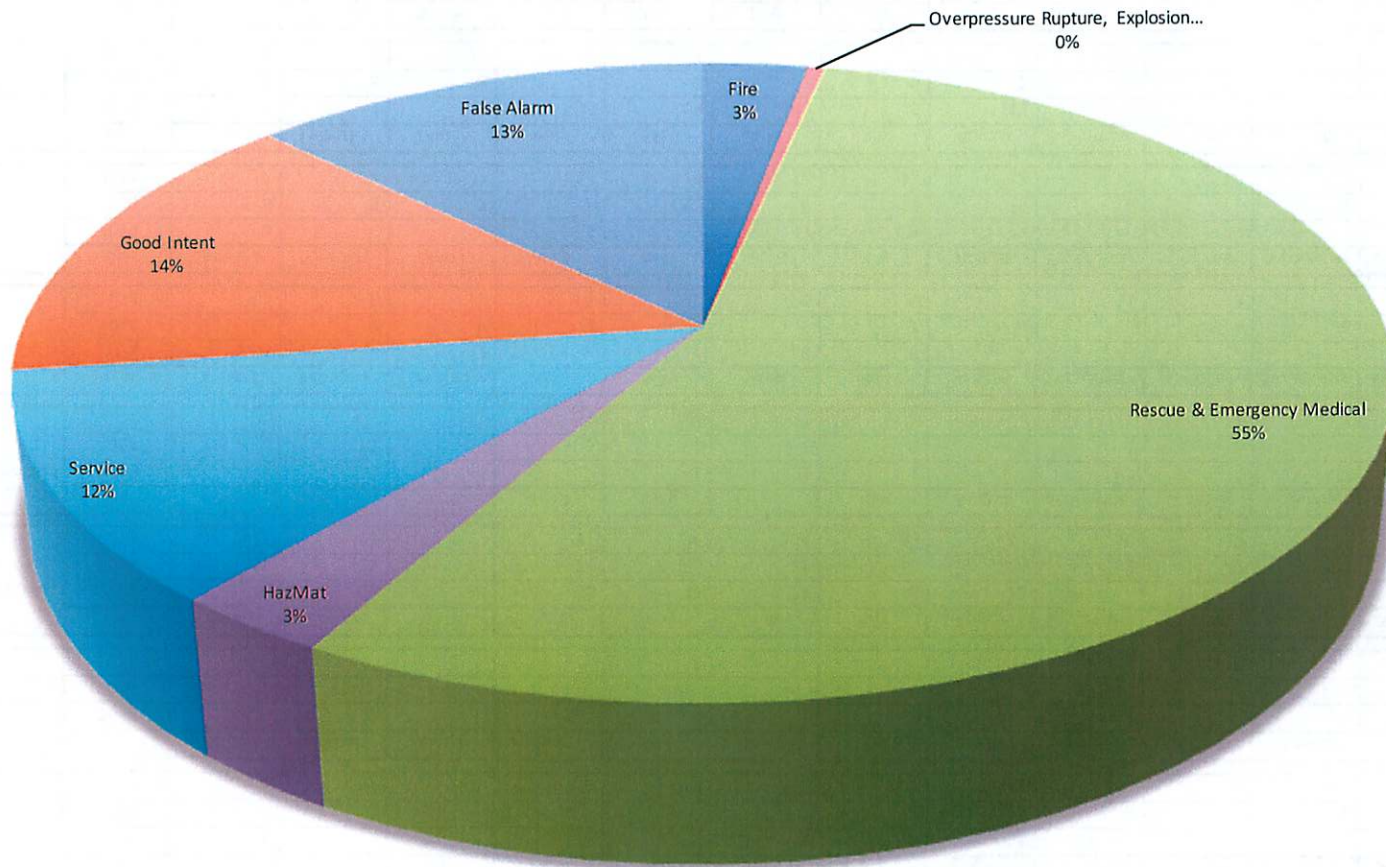
Los Altos Hills County Fire District  
Average Response Times for Code 3 Calls  
2013



## Los Altos Hills County Fire District Incident Types by Month 2015, 2014 & 2013

Fire	Year	January	February	March	April	May	June	July	August	September	October	November	December	Total
	2015	2	-	-	3	1	2	3	1					12
	2014	1	2	-	-	-	3	3	1	-	2	1	-	13
	2013	2	-	1	1	3	2	1	1	-	2	-	3	16
Overpressure Rupture, Explosion, Overheat (No Fire)	Year	January	February	March	April	May	June	July	August	September	October	November	December	Total
	2015	-	1	-	-	-	1	-	-					2
	2014	1	-	-	-	-	-	-	1	-	-	-	-	2
	2013	-	-	1	-	2	-	1	-	-	-	-	-	4
Rescue & Emergency Medical Service	Year	January	February	March	April	May	June	July	August	September	October	November	December	Total
	2015	31	26	28	18	42	31	26	22					224
	2014	25	25	25	24	33	21	18	24	32	29	37	20	313
	2013	11	23	17	31	24	34	30	14	19	29	23	27	282
Hazardous Condition (No Fire)	Year	January	February	March	April	May	June	July	August	September	October	November	December	Total
	2015	3	5	1	-	1	1	1	1					13
	2014	-	1	-	3	1	2	2	2	1	2	-	4	18
	2013	-	-	-	-	2	3	1	-	-	2	-	2	10
Service Call	Year	January	February	March	April	May	June	July	August	September	October	November	December	Total
	2015	4	7	7	7	4	8	6	5					48
	2014	12	7	5	7	5	5	7	4	3	4	6	14	79
	2013	4	6	6	5	10	6	5	5	11	3	1	10	72
Good Intent Call	Year	January	February	March	April	May	June	July	August	September	October	November	December	Total
	2015	9	6	5	6	10	7	9	7					59
	2014	8	9	7	8	12	6	12	15	6	6	9	9	107
	2013	7	12	9	13	14	10	12	12	12	8	5	11	125
False Alarm & False Call	Year	January	February	March	April	May	June	July	August	September	October	November	December	Total
	2015	7	2	5	6	3	12	5	12					52
	2014	7	5	8	3	3	7	9	2	4	14	6	10	78
	2013	4	3	1	12	4	3	5	7	12	6	9	9	75
Special Incident	Year	January	February	March	April	May	June	July	August	September	October	November	December	Total
	2015	-	-	-	-	-	-	-	-					0
	2014	-	-	-	-	1	-	-	-	-	-	-	-	1
	2013	-	-	-	-	-	-	-	-	-	-	-	-	0
Total Incidents	Year	January	February	March	April	May	June	July	August	September	October	November	December	Total
	2015	56	47	46	40	61	62	50	48	-	-	-	-	410
	2014	54	49	45	45	55	44	51	49	46	57	59	57	611
	2013	28	44	35	62	59	58	55	39	54	50	38	62	584

**Los Altos Hills County Fire District  
Service Calls by Type  
2015**



**Los Altos Hills County Fire District**  
**Monetary Loss by Month and Incident Type**  
**2015, 2014 & 2013**

Building Fire	Year	January	February	March	April	May	June	July	August	September	October	November	December	Total
	2015	16,500	-	-	-	-	2,000	2,000	-	-	-	-	-	20,500
	2014	-	2,000	-	-	-	-	-	-	-	200,000	100,000	-	302,000
	2013	400,000	-	950,000	-	500	-	-	-	-	500	-	3,592,500	4,943,500
Vehicle Fire	Year	January	February	March	April	May	June	July	August	September	October	November	December	Total
	2015	-	-	-	4,000	-	-	1,700	2,500	-	-	-	-	8,200
	2014	-	5,000	-	-	-	-	-	-	-	-	-	-	5,000
	2013	8,000	-	-	-	-	-	-	200	-	-	-	-	8,200
Natural Vegetation Fire	Year	January	February	March	April	May	June	July	August	September	October	November	December	Total
	2015	-	-	-	50	1	-	5,000	-	-	-	-	-	5,051
	2014	-	-	-	-	-	-	-	-	-	-	-	-	-
	2013	-	-	-	-	-	-	-	-	-	100	-	50	150
Outside Rubbish/Dumpster...	Year	January	February	March	April	May	June	July	August	September	October	November	December	Total
	2015	-	-	-	-	-	-	-	-	-	-	-	-	-
	2014	-	-	-	-	-	-	-	-	-	50	-	-	50
	2013	-	-	-	4,500	-	30	-	-	-	-	-	-	4,530
Special Outside Fire	Year	January	February	March	April	May	June	July	August	September	October	November	December	Total
	2015	-	-	-	-	-	-	-	-	-	-	-	-	-
	2014	-	-	-	-	-	-	-	-	-	-	-	-	-
	2013	-	-	-	-	-	-	-	-	-	-	-	-	-
Total Fire Loss	Year	January	February	March	April	May	June	July	August	September	October	November	December	Total
	2015	16,500	-	-	4,050	1	2,000	8,700	2,500	-	-	-	-	33,751
	2014	-	7,000	-	-	-	-	-	-	-	200,050	100,000	-	307,050
	2013	408,000	-	950,000	4,500	500	30	-	200	-	600	-	3,592,550	4,956,380



---

# Response Time Centiles

*All Districts with Averages*

---

## August 2015

### Los Altos Hills

First Unit Arriving in Less Than:	1 min.	2 min.	3 min.	4 min.	5 min.	6 min.	7 min.	8 min.	9 min.	10 min.
<b>CM11 (1 response)</b>	0.0%	0.0%	0.0%	0.0%	0.0%	0.0%	0.0%	100.0%	100.0%	100.0%
Average Response Time:	7:30									
<b>CM17 (1 response)</b>	0.0%	0.0%	0.0%	0.0%	0.0%	100.0%	100.0%	100.0%	100.0%	100.0%
Average Response Time:	5:52									
<b>E75 (8 responses)</b>	0.0%	0.0%	0.0%	0.0%	12.5%	37.5%	62.5%	87.5%	100.0%	100.0%
Average Response Time:	6:35									
<b>E76 (1 response)</b>	0.0%	0.0%	0.0%	0.0%	0.0%	0.0%	100.0%	100.0%	100.0%	100.0%
Average Response Time:	6:12									
<b>E77 (2 responses)</b>	0.0%	0.0%	0.0%	0.0%	0.0%	0.0%	50.0%	100.0%	100.0%	100.0%
Average Response Time:	7:14									
<b>PAE362 (1 response)</b>	0.0%	0.0%	0.0%	0.0%	0.0%	0.0%	0.0%	100.0%	100.0%	100.0%
Average Response Time:	7:41									
<b>R74 (20 responses)</b>	5.0%	5.0%	10.0%	20.0%	40.0%	40.0%	65.0%	80.0%	85.0%	90.0%
Average Response Time:	6:06									
<b>Los Altos Hills (34 responses)</b>	2.9%	2.9%	5.9%	11.8%	26.5%	35.3%	61.8%	85.3%	91.2%	94.1%
Average Response Time:	6:22									

# Fire Department

## Monthly Incident Type Report (Summary)

### Los Altos Hills

Alarm Date Between {8/1/2015} And {8/31/2015} and District =  
"LAH "

Incident Type	Property Use	Count	Total Est Loss
<b>1 Fire</b>			
131 Passenger vehicle fire	961 Highway or divided highway	1	\$2,500
		<b>1</b>	<b>\$2,500</b>
<b>3 Rescue &amp; Emergency Medical Service Incident</b>			
321 EMS call, excluding vehicle accident with injury		16	\$0
322 Motor vehicle accident with injuries		2	\$0
324 Motor Vehicle Accident with no injuries		4	\$0
		<b>22</b>	<b>\$0</b>
<b>4 Hazardous Condition (No Fire)</b>			
424 Carbon monoxide incident		1	\$0
		<b>1</b>	<b>\$0</b>
<b>5 Service Call</b>			
500 Service Call, other		1	\$0
520 Water problem, Other		2	\$0
522 Water or steam leak		1	\$0
554 Assist invalid		1	\$0
		<b>5</b>	<b>\$0</b>
<b>6 Good Intent Call</b>			
600 Good intent call, Other		1	\$0
6113 Dispatched & cancelled upon arrival		1	\$0
622 No Incident found on arrival at dispatch address		3	\$0
652 Steam, vapor, fog or dust thought to be smoke		1	\$0
653 Smoke from barbecue, tar kettle		1	\$0
		<b>7</b>	<b>\$0</b>
<b>7 False Alarm &amp; False Call</b>			
700 False alarm or false call, Other		5	\$0
733 Smoke detector activation due to malfunction		1	\$0
735 Alarm system sounded due to malfunction		2	\$0
740 Unintentional transmission of alarm, Other		1	\$0
743 Smoke detector activation, no fire - unintentional		2	\$0
745 Alarm system activation, no fire - unintentional		1	\$0
		<b>12</b>	<b>\$0</b>

**Fire Department**  
**Monthly Incident Type Report (Summary)**  
**Los Altos Hills**

Alarm Date Between {8/1/2015} And {8/31/2015} and District =  
"LAH "

Incident Type	Property Use	Count	Total Est Loss
Total Incident Count:		48	Total Est Loss: \$2,500

**Fire Department**  
**Monthly Cause of Ignition Report (Summary)**  
**Los Altos Hills**

**Alarm Date Between {8/1/2015} And {8/31/2015} and District =  
"LAH "**

<b>Cause of Ignition</b>	<b>Count</b>	<b>Total Est Loss</b>
U Cause undetermined after investigation Undetermined	1	\$2,500
<b>Total Incident Count:</b>	<b>1</b>	<b>Total Est Loss: \$2,500</b>

SANTA CLARA COUNTY FIRE DEPARTMENT

MONTHLY / CALENDAR YEAR REPORT for August 2015

Classification of Alarm	This Month City	This Month District	This Year City	This Year District	Last YTD City	Last YTD District
<b>A. Number of Fires:</b>						
Structures	1	0	11	2	2	2
Refuse/Debris	0	0	0	1	4	1
Misc. Outdoor	0	0	1	0	4	2
Vegetation	0	0	3	5	1	4
Vehicle	0	1	1	4	4	1
<b>A. Total Fires</b>	<b>1</b>	<b>1</b>	<b>16</b>	<b>12</b>	<b>15</b>	<b>10</b>
<b>B. Number of Non-Fires:</b>						
Accidental/Vicinity Alarm	49	17	329	100	311	111
Intentional False	0	0	0	0	1	2
Smoke/Gas Investigation	3	2	41	21	51	21
Hazardous Materials	4	1	14	5	16	5
Medical Emergency	94	16	869	188	853	174
Rescue	7	6	49	36	51	21
Public Service	13	5	153	48	118	48
<b>B. Total Other Calls</b>	<b>170</b>	<b>47</b>	<b>1,455</b>	<b>398</b>	<b>1,401</b>	<b>382</b>
<b>Total A + B</b>	<b>171</b>	<b>48</b>	<b>1,471</b>	<b>410</b>	<b>1,416</b>	<b>392</b>
<b>C. Number of All Other Calls</b>	(see note below)					
Auto Aid-In						
Auto Aid to PA, MV, SUN						
Mutual Aid-In	data not avail		data not avail			
Mutual Aid to PA, MV, SUN	data not avail		data not avail		data not avail	
<b>C. Total Other Calls</b>	<b>data not avail</b>		<b>data not avail</b>		<b>data not avail</b>	
<b>D. TOTAL CALLS</b>	<b>171</b>	<b>48</b>	<b>1,471</b>	<b>410</b>	<b>1,416</b>	<b>392</b>
<b>E. Number of Injuries/Fatalities</b>						
Fire Injuries-Citizens	0		0		0	
Fire Injuries-FF	0		0		0	
Fire Fatalities-Citizens	0		0		0	
Fire Fatalities-FF	0		0		0	
<b>F. Estimated Dollar Fire Loss</b>						
Structure	\$5,000	\$0	\$13,000	\$2,000	\$2,200	\$2,000
Vehicles	\$0	\$2,500	\$0	\$6,200	\$8,800	\$5,000
All Other	\$0	\$0	\$160	\$5,000	\$17,001	\$0
<b>F. Total Dollar Loss</b>	<b>\$5,000</b>	<b>\$2,500</b>	<b>\$13,160</b>	<b>\$13,200</b>	<b>\$28,001</b>	<b>\$7,000</b>

Note: LOS and LAH figures for Auto/Mutual Aid and injury data are combined.  
 Vicinity alarms include UTL.  
 Vehicle accidents are shown as rescues unless they are reported as medical calls.

mae  
 9/3/15  
 11:17 AM