



MEDIA RELEASE

January 28, 2026

Page Mill Road I-280 Interchange Project:

Interchange vegetation management work begins Tuesday February 17, 2026

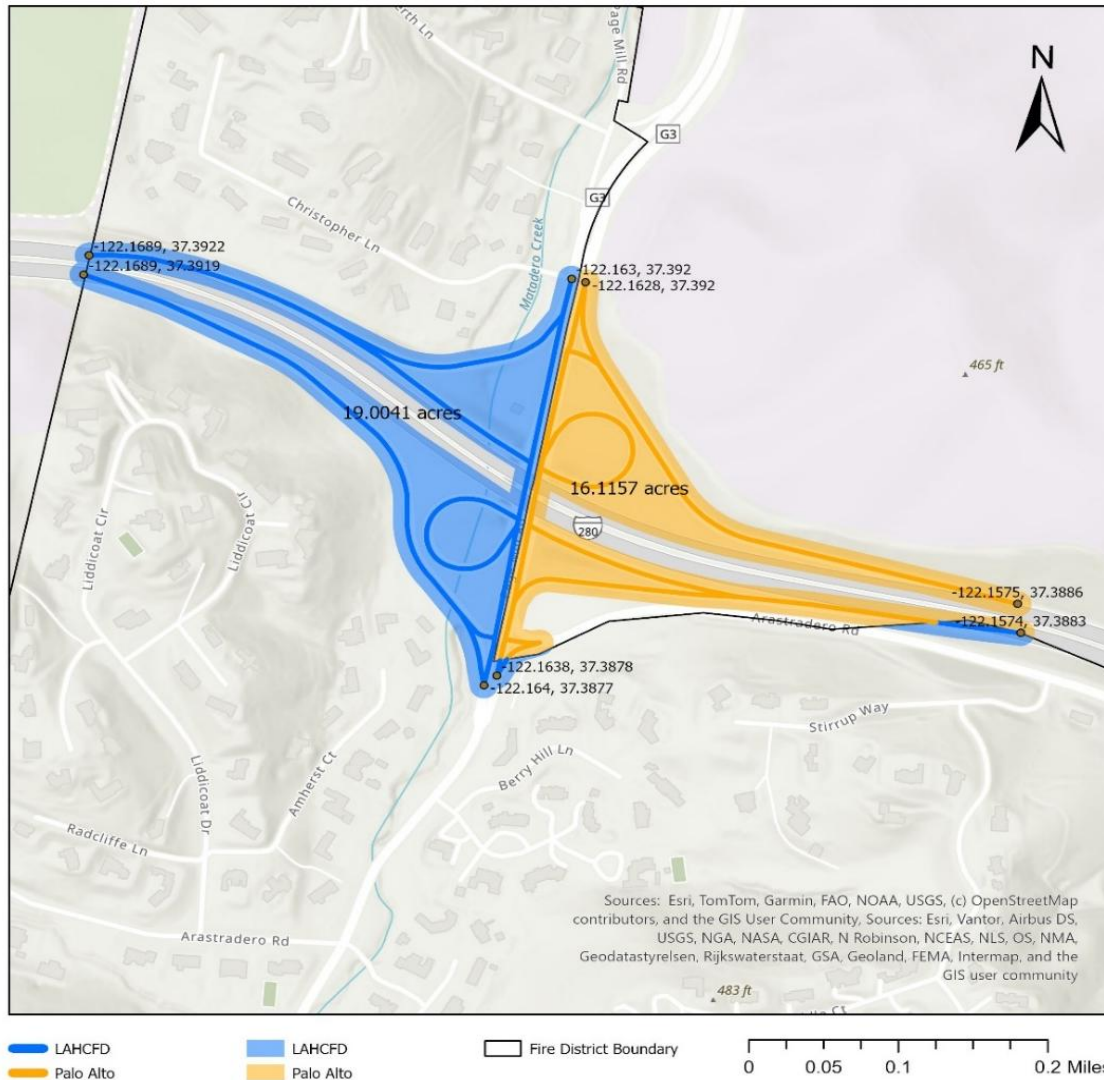


Santa Clara County FireSafe Council, Los Altos Hills County Fire District, City of Palo Alto and Palo Alto Fire Department, in collaboration with Caltrans, Santa Clara County Fire Department, the Town of Los Altos Hills, and other partners, are providing notice about the Page Mill Road and I-280 Interchange Project.

The goals of this project are to trim woody vegetation, prune trees, clear dead material and remove roadside trash to reduce wildfire risks and impacts of weather events. This project will provide access along freeway interchange ramps during a wildfire or disaster, improve visibility and travel safety, and reduce the spread of roadside fire ignition from vehicles or other sources. The hazardous vegetation removal along the roadside will provide safer ingress and egress for first responders and the public in the event of wildfire or other disasters.

Page Mill Interchange Treatment Project

2026



This project will treat the Page Mill / I-280 Interchange which consists of four outer ramps and two inner loop ramps. The following treatment areas have been separated by jurisdiction between LAHCFD and the City of Palo Alto.

The LAHCFD Jurisdiction:

These portions of the project will treat both sides of the following,

- The South Bound Page Mill Road to North Bound I-280 ramp, approximately 0.3 linear miles
- The South Bound I-280 to Page Mill Road ramp including the left turn lane to North Bound Page Mill Road, approximately 0.5 linear miles.
- The on ramp to North Bound I-280 from the inner loop ramp, approximately 0.2 linear miles
- The South Bound Page Mill Road to South Bound I-280 inner loop ramp, approximately 0.2 linear miles
- The western side and center median of South Bound Page Mill Road, approximately 0.3 linear miles
- The southern ends of North Bound Page Mill Road and part of the ramp onto Arastradero Road from North Bound Page Mill Road, approximately 0.1 linear miles
- The southern side of the eastern end of the North Bound Page Mill Road to South Bound I-280 ramp, approximately 0.1 linear miles

Total treatment in LAHCFD jurisdiction: approximately 19 acres

The City of Palo Alto Jurisdiction:

These portions of the project will treat both sides of the following,

- The North Bound I-280 to Page Mill Road ramp including the left turn lane to South Bound Page Mill Road, approximately 0.4 linear miles
- The North Bound Page Mill Road to North Bound I-280 inner loop ramp, approximately 0.2 linear miles
- The North Bound Page Mill Road to South Bound I-280 ramp, approximately 0.2 linear miles
- The on ramp to South Bound I-280 from the inner loop ramp, approximately 0.3 linear miles
- Part of the ramp onto Arastradero Road from North Bound Page Mill Road and from the South Bound I-280 off ramp, approximately 0.1 linear miles
- The eastern side of most of North Bound Page Mill Road, approximately 0.3 linear miles

Total treatment in Palo Alto jurisdiction: approximately 16 acres

Total Project Treated Miles: 5.86

Traffic Information

Traffic

control will be in place for the duration of the Page Mill / I-280 Interchange Project. **There will be intermittent lane or ramp closures during the project.** For short periods of time within the working hours of 10am-2pm some ramps will be inaccessible. Changeable message signs will be in the area starting two weeks before the work notifying residents of the upcoming closures. The project is scheduled for February 17, 2026 to February 26, 2026. Work on the interchange will occur Mondays through Fridays, from 10:00 am to 2:00 pm. Work on frontage areas may occur between 9am and 4pm. All work is dependent on weather conditions and holidays.

Motorists should expect delays and allow extra time for travel and alternate routes.

Please exercise caution when passing through the work zone. It is crucial that residents stay outside the designated "cone zone" at all times to ensure the safety of everyone—residents, crews, and property.

The Los Altos Hills County Fire District appreciates your patience during the project implementation and your support of evacuation routes for life and property safety.

Additional Project details can be found at:

<https://www.lahcfd.org/community-projects/upcoming-projects/page-mill-evacuation-route-maintenance/>

End of Media Release.